

3 September

**2011**

# Report on the Conduct of the Wollongong City Council Election



---

## Contents

Election at a Glance.....	1
Conduct of the Election .....	3
Electoral Staffing .....	14
Services to Electors.....	16
Services to Candidates and Political Parties.....	17
Elections Costs .....	18
Future Directions .....	18
Appendices.....	19

## Election Timetable

Activity	Date
Close of rolls	6:00pm Monday, 25 July 2011
Close of nominations	12:00 noon Wednesday, 3 August 2011
Pre-poll voting starts	Monday, 22 August 2011
Registration of how-to-vote material closes	5:00pm Friday, 26 August 2011
Postal voting applications close	5:00pm Monday, 29 August 2011
Declared Institution voting commences	Monday, 29 August 2011
Declared Institution voting concludes	Wednesday, 31 August 2011
Pre-poll voting finishes	6:00pm Friday, 2 September 2011
Election day	Saturday, 3 September 2011
Return of postal votes closes	6:00pm Monday, 5 September 2011
Distribution of preferences	Tuesday, 6 September 2011
Declaration of the poll – Lord mayor	Wednesday, 7 September 2011
Declaration of the poll – Councillors	Thursday, 8 September 2011

© State of New South Wales through the New South Wales Electoral Commission, 2012. All rights reserved.

## Election at a Glance

**Date of Election** Saturday, 3 September 2011

**Returning Officer** Mr Vic Miglionico

### Voter Participation

**Total Electors** 135,468

**Formal Votes** 112,486

**Informal Votes** 5,706

**Total Votes** 118,192

**Voter Turnout** 87.2%

**Rate of Informality** 4.8%

### Voting Methods Electors used

**Ordinary** 97,626

**Postal** 3,170

**Pre-poll/ Declared Institution** 11,561

**Section/Silent** 129

### Polling Places

**Pre-poll Voting Centres** 3

**Polling Places** 62

**Election Officials** 458

**Cost of Election** \$579,278

### Lord Mayor Election

**Total Candidates** 12

**Female Candidates** 3

**Male Candidates** 9

**Successful Candidate** Mr Gordon BRADBERRY

### Councillor Election Ward 1

**Total Candidates** 32

**Female Candidates** 15

**Male Candidates** 17

**Successful Candidates** Mr Leigh COLACINO

Ms Janice KERSHAW

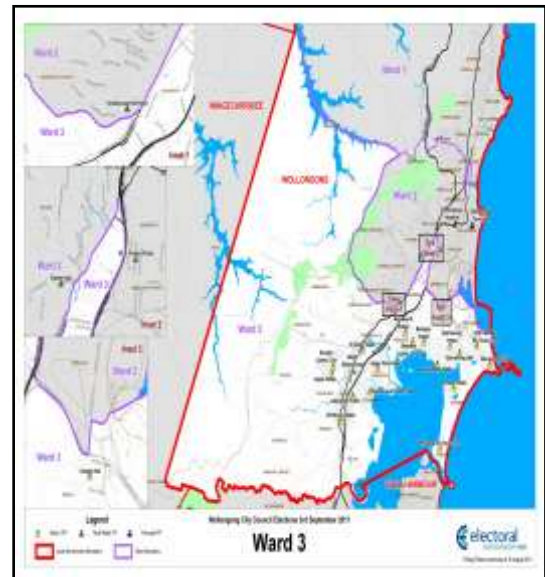
Ms Jill MERRIN

Mr Greg PETTY



Councillor Election Ward 2	
<b>Total</b>	28
<b>Candidates</b>	
<b>Female</b>	7
<b>Candidates</b>	
<b>Male</b>	21
<b>Candidates</b>	
<b>Successful</b>	Mr John DORAHY
<b>Candidates</b>	Mr David BROWN
	Ms Michelle BLICAVS
	Mr George TAKACS

Councillor Election Ward 3	
<b>Total</b>	23
<b>Candidates</b>	
<b>Female</b>	8
<b>Candidates</b>	
<b>Male</b>	15
<b>Candidates</b>	
<b>Successful</b>	Mr Chris CONNOR
<b>Candidates</b>	Mr Bede CRASNICH
	Ms Ann MARTIN
	Ms Vicki CURRAN



---

## Conduct of the Election

### Background

Wollongong City Council is a divided council consisting of three wards, each with four councillors. In addition, the council has a popularly elected Lord Mayor. The Council was placed under administration on 9 July 2008.

The Council continued under administration until returning to democracy by electing 12 councillors and a Lord Mayor on Saturday, 3 September 2011.

Councillors are usually elected for a period of four years, commencing their role on the day that the election is declared and holding the position until the next ordinary election.

As this election was not part of the 2012 NSW Local Government Elections, a specific piece of legislation was passed to allow the election and to ensure the next election falls in line with the September 2016 Local Government Elections.

### Performance

#### Against Charter

The Local Government Elections 2012 Service Charter was used as the service standards to apply.

## Comparisons to LGE2008

Wollongong City Council was placed under administration prior to the 2008 Local Government Elections, so there was no election held in 2008.

### Changes to Legislation

As Wollongong City Council required fresh elections that were not part of the 2012 elections, and to ensure another election would not be required as part of those elections, the *Local Government (Wollongong and Shellharbour Elections) Act 2011* was passed and then commenced on 10 May 2011.

## Innovation

### Wollongong Count Centre

A count centre for Wollongong City Council was established by the NSWEC at Wollongong Town Hall, in conjunction with the Shellharbour City Council Election.

The Councillor ballot papers for Wollongong were examined and sorted in preparation for data entry. The ballot papers were then data entered twice into the NSWEC computer counting software.

This required employing up to 100 staff for the count centre involved in the examination and data entry of the ballot papers.

The count centre operated from Sunday, 4 September 2011, to Wednesday, 7 September 2011.

---

The count for Councillors for Wollongong City Council was conducted on Wednesday, 7 September 2011.

The Mayoral ballot papers for Wollongong City Council were check counted on Sunday, 4 and Monday, 5 September 2011. The distribution of preferences to elect the Mayor was conducted on Tuesday, 6 September 2011.

The establishment of the count centre in Wollongong allowed scrutineers, appointed by candidates, to observe the counts.

### **Senior Office Assistant appointed to the Returning Officer's Office**

At previous elections it had been noted that unofficially Returning Officers used somebody in their office to whom to delegate more responsibility. For example the management of staffing (recruitment) and pre-poll activities often takes up significant blocks of time hence it is difficult for the Returning Officer to assume day to day responsibility for all these tasks. At the 2011 NSW State Election and at the Wollongong City Council Election, NSWEC introduced the category of Senior Office Assistants (SOA) and paid them a higher hourly rate to recognise their additional responsibilities.

The introduction of the SOA position improved administration within the Returning Officer's office.

### **Councillor Count Managers**

The NSWEC introduced the role of Councillor Count Managers at nominated polling places for the Wollongong City Council Election.

The role of the Councillor Count Manager was to attend the polling place at 5.00pm and supervise the count of Councillor ballot papers in the polling places after 6.00pm. This allowed the Polling Place Manager to concentrate on the counting of the Mayoral ballot papers and the completion of election returns in the polling place.

This resulted in quicker counts in the polling place and faster presentation of results on the NSWEC Virtual Tally Room website.

### **iVote**

Although iVote was allowed for the NSW State Election in 2011, legislation is yet to be passed to enable iVote at Local Government elections.

---

## Communications

### Advertising

The 2011 Local Government Election advertising campaign for Wollongong consisted of council specific statutory advertisements.

### Statutory Campaign

Prior to the election the NSWEC consulted Wollongong City Council to determine in which local newspapers the statutory advertisements, required under the legislation, were to be placed. The NSWEC also requested that council provided information about the number of times the advertisements were to appear in the newspapers.

Items covered in the statutory advertisements included:

- enrolment on residential and non-residential rolls;
- nomination information;
- candidates and polling place information; and
- election results.

Reproductions of the Newspaper Advertisements are at Appendices A-D

### Social media

Social media was monitored but not engaged during the election period.

## Website

The NSWEC's website provided all the information that stakeholders generally, not just electors, needed to participate in the by-election. It provided information on the election timetable, employment opportunities, enrolment, polling places, candidates and poll results.

The NSWEC had a specific Wollongong Local Government Election page from which stakeholders could source information on:

- election timetable;
- election employment opportunities;
- enrolment requirements and online enrolment confirmation;
- methods for voting;
- Local Government political parties;
- candidates;
- polling place lookup facility; and
- election results.

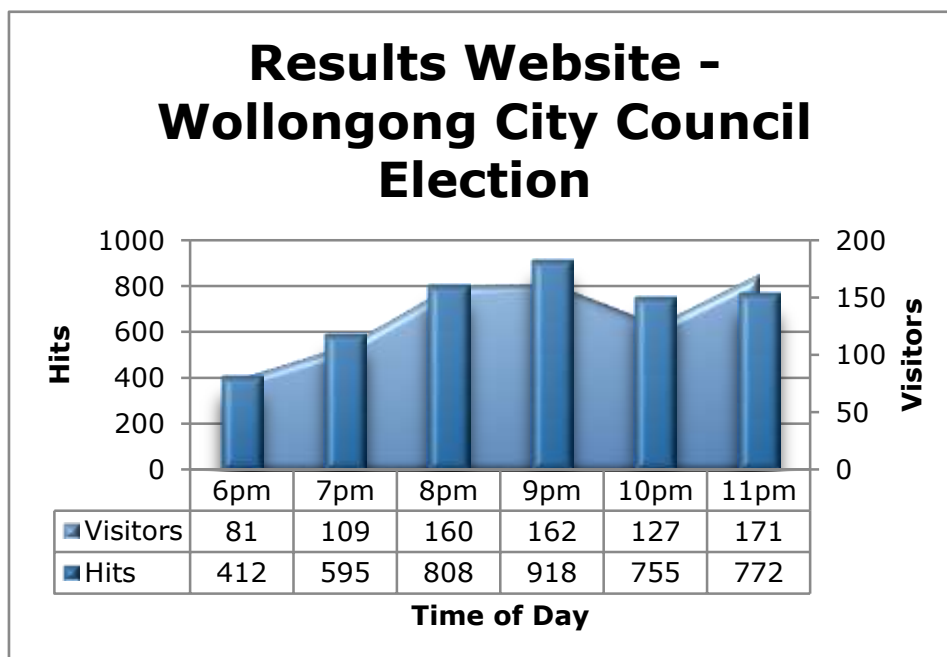
An enrolment search facility on the NSWEC website was available to assist electors verify their enrolment information including their council and ward information. Polling place information provided on the website included accessibility information for electors with a disability.

To ensure availability of election information the NSWEC requested Wollongong City Council provide a link on their website to the NSWEC site.

---

There were over 8,500 unique visitors to pages related to the Wollongong City Council Election.

Use of the NSWEC's website is typically greatest on election night when users seek information on results. The following graph provides a picture of usage over the period from close of polling to midnight on election night for the Wollongong City Council Election.





---

## Nominations

Nominations closed at 12:00 noon on Wednesday, 3 August 2011.

A total of 95 nominations were received by close of nominations. The list of nominations is at Appendix E.

The draw for ballot paper position, held at 2pm nomination day, was conducted by the Returning Officer at the Returning Officer's office.

The ballot papers were printed in Sydney by the NSW Electoral Commission's preferred security printer with the ballot papers being produced with a security background. A reproduction of the Ballot Papers is at Appendix F.

For a nomination to be accepted by the Returning Officer, candidates were required to complete a nomination form and a Candidate Information Sheet. All Candidate Information Sheets were published on the NSWEC website and were made available for public inspection at the Returning Officer's office, pre-poll centres, Declared Institutions and all polling places.

As part of the nomination process, candidates were also required to submit a statistics form and pay a nomination deposit to the Returning Officer at the time of nomination. The nomination fee of \$125 was applicable to all candidates, however, groups with six candidates or more were required to pay a maximum of \$625 for a group to nominate.

The nomination deposit is refunded to candidates if:

- a candidate is elected or receives at least 4% of the total first preference votes;
- in a group, any one of the group is elected or receives at least 4% of the total first preference votes; or
- the election is uncontested.

---

## Rolls

### Residential

In NSW enrolment and voting are compulsory at all Federal, State and Local Government elections. The NSW electoral roll is managed by the Australian Electoral Commission in conjunction with the NSWEC.

Legislation provides that for Local Government elections the electoral roll closes on the fortieth day before the day of the election. Any person who was on the roll at the close of roll date, 6:00pm Monday, 25 July 2011, was required to vote.

There were 135,468 electors on the residential electoral roll for Wollongong City Council.

### Non-Residential

The non-residential roll of electors is a means to allow people who pay rates to a council for property they own, but do not occupy, to participate in the democratic process for that area. The non-residential roll lapses after each election. Electors must make a fresh application to appear on the roll for each election. Electors on the non-residential roll are not fined for failing to vote. While the NSWEC undertook steps to promote non-residential enrolment as part of the advertising campaign, the responsibility of compiling the roll remained with the Wollongong City Council General Manager. The General Manager was required to prepare and certify a list of the potential electors who applied for the non-residential roll and provide the list to the NSWEC.

There were 22 electors on the non-residential roll for Wollongong City Council for the 2011 election.

---

## Voting

### Method of Voting

Section 285 *Local Government Act 1993* prescribes that the voting system in a contested election of a councillor or councillors is to be:

- optional preferential if the number of councillors to be elected is one or two;
- proportional representation if the number of councillors to be elected is three or more.

For the election of councillors, four for each of the three wards, proportional representation was the method used.

The method for the election of Lord Mayor was optional preferential.

### Absent Voting

Unlike State and Federal elections, absent voting is not available at NSW Local Government elections for electors who are outside their council area or ward on election day.

## Early Voting

### Pre-poll Voting

Pre-poll voting was available to those electors who met at least one of the following criteria set out in the legislation:

- were not within the ward or area for which the election was being held on election day;
- were not within 8 kilometres of any polling place within their council area or ward on election day;
- were travelling under conditions that prevented them from attending a polling place to vote;
- were unable to attend a polling place to vote for religious beliefs;
- were caring for another person who requires his or her care for medical reasons and so were prevented from attending at any such polling place to vote; or
- were working throughout the hours of voting on election day.

Electors meeting the above criteria were provided with the opportunity to cast their vote in the two weeks prior to election day.

### Postal Voting

Postal voting services were provided to those electors who were unable to cast their vote on election day at a polling place for any of the following reasons prescribed in the legislation:

- will not be within the ward or area for which the election is being held on election day;

- will not be within 8 kilometres of any polling place within their council area or ward on election day;
- will be travelling under conditions that prevent them from attending a polling place to vote;
- due to illness, disability or approaching maternity are prevented from attending a polling place to vote;
- are unable to attend a polling place to vote for religious beliefs;
- are incarcerated;
- are caring for another person who requires his or her care for medical reasons and so will be prevented from attending at any such polling place to vote;
- will be working throughout the hours of voting on election day; or
- are a silent elector.

Electors who are registered as a Registered General Postal Voter at State level are not required to register again for Local Government elections and were therefore automatically sent postal vote ballot papers.

Applications for postal voters opened on nomination day with electors able to obtain applications from the NSWEC website, the NSWEC head office or the Returning Officer's office. Applications for postal voting closed at 5:00pm on Monday, 29 August 2011.

In order to be admitted to the count postal votes needed to be received

by the Returning Officer by 6:00pm on Monday, 5 September 2011.

### *Declared Institutions*

The Electoral Commissioner has the authority to appoint hospitals, nursing homes, retirement villages and like facilities as Declared Institutions, to assist the residents and/or patients of these facilities who are unable to attend polling place on election day.

Election officials visited Declared Institutions from the Monday until Wednesday before election day.

A total of 14 institutions were visited:

#### Ward 1

- Coledale District Hospital;
- Illawarra Diggers Aged & Community Care Residence;
- Frank & Jess Kennett Home;
- McCauley Lodge Thirroul;
- Towradgi Park Age Care Facility; and
- Woonona Retirement Village.

#### Ward 2

- Coniston Nursing Home;
- Farmborough Aged Care Centre;
- IRT Link Sea Side Nursing Home;
- Marco Polo Unanderra Care Services;
- Figtree Private Hospital; and
- Wollongong Nursing Home.

---

## Ward 3

- IRT William Beach Gardens Care Centre; and
- Port Kembla Hospital.

## Election day Voting

### Voting

Three types of votes were distributed to electors on election day. The type of vote the elector receives is determined by their individual circumstance and includes:

- Ordinary
  - Issued to an elector whose name and address is on the roll at the polling place.
- Silent
  - Issued to an elector whose name appears on the roll but their address has been suppressed.
- Section Vote
  - Name Not On Roll - issued to an elector whose name cannot be found on the roll but claims to be entitled to vote; and
  - Name Already Marked As Voted - issued to an elector whose name is already marked off as having voted, but claims not to have voted.

### Polling Places

The establishment of polling places for election day is a major component of the election preparation for the NSWEC and the Returning Officer. It is a difficult balance to select the number of polling places to meet the needs of

the community while keeping the costs to a minimum. These issues present the NSWEC head office with challenges that cannot be met through exact science but are determined by a series of formulae developed by the NSWEC and based on prior experience in that Local Government area.

In the lead up to the election the NSWEC provided council with a draft list of proposed polling places to be used at this election. Comments from the council received by the NSWEC were taken into consideration prior to the final selection of polling places.

Polling places were open to electors from 8:00am to 6:00pm on election day.

There were 62 polling places across the Wollongong City Council area on election day. Some polling places were able to issue votes for multiple wards, effectively creating 73 polling places across the full council area.

The NSWEC website provided details of which polling places were accessible and the restrictions on accessibility where relevant. Twenty-four polling places were fully wheelchair accessible and 18 were accessible with assistance.

---

While the NSWEC does not own any of the venues used for voting it is committed to providing the best possible voting facilities for electors with a disability and understands the importance of providing accurate accessibility information to the public. Where possible, the NSWEC leased wheelchair accessible venues as polling places.

A list of polling places is included in the reproduction of the Polling Places Initial Counts in Appendix G.

## Counting the Votes

The accuracy of vote counting and the impartiality of this process are key tenets of electoral administration. The counting of results is a complex process, prescribed by legislation, to ensure accuracy in the results.

The method of counting votes for Local Government elections is set out in the Regulation.

For the Lord Mayor election the method used was optional preferential and for the Councillors election the proportional representation method was used.

## Counting Procedures

### *Lord Mayor*

On election night all polling places conducted an initial count of first preference votes. At the Returning Officer's office, declaration (ie postal, pre-poll and declared institution) votes were opened, sorted and first preference counted. The first preference count results are placed on the NSWEC website on election night.

On the Sunday after election day the Returning Officer conducted a check count of all the ballot papers counted on election night. The check count was conducted at the Returning Officer's office with scrutineers able to attend. The final result of first preference counts was updated on the NSWEC website.

Final distribution of preference counts commenced on the Tuesday after election day with the final result and count sheet uploaded on the NSWEC website.

### *Councillors*

On election night all polling places conducted an initial sort and count of first preference votes for all groups above the line and all candidates below the line. At the Returning Officer's office, declaration (ie postal, pre-poll and declared institution) votes are opened, sorted and first preference counted for all groups above the line and all candidates below the line. The count results

---

were placed on the NSWEC website on election night.

The NSWEC established a Count Centre at Wollongong Town Hall to conduct the count of ballot papers for Councillors for both Wollongong City Council and Shellharbour City Council.

On the night of the election the Councillor ballot papers were transported from the polling places to the Wollongong Town Hall, where, on the Sunday, all ballot papers were check counted, sorted and batched ready for data entry.

The ballot paper markings were data entered into a computer programme by approximately 40 data entry operators, working over two seven hour shifts per day and managed by senior NSWEC staff.

To ensure the accuracy of results, all ballot papers were put through two data entry rounds and, where any discrepancies arose, a third verification round was applied. Before running the count, data entry totals were reconciled against election night figures to ensure totals were complete and correct.

The Councillor count for all three wards of Wollongong City Council was completed on Tuesday after election day with the final result (pressing of the button) completed on the Wednesday afternoon after election day. The count results were placed on the NSWEC website.

Full details of the distribution of preferences are available on the NSWEC website. A reproduction of the Lord Mayor Distribution of Preferences is at Appendix H.

## Declaration of the Poll

The successful candidate was declared elected for Lord Mayor by the Returning Officer on Wednesday, 7 September 2011, and Councillors for Wards 1, 2 and 3 on Thursday, 8 September 2011, following the statutory 24 hour period required for any recount requests.

Once the declaration paperwork had been signed by the Returning Officer, copies of the declaration were provided to the Electoral Commissioner, the Council's General Manager, the Director General, Division of Local Government NSW Department of Premier and Cabinet and the Secretary, Local Government and Shires Associations. In addition, the Returning Officer advised all candidates either by phone, email or SMS that the election results were available on the NSWEC website. Election results were also published in local press.

---

## Electoral Staffing

### Returning Officer

The Electoral Commissioner appointed Mr Vic Miglionico as Returning Officer for the Wollongong City Council's election. Appointment was from 4 July until 9 September 2011, with a performance review conducted on completion of his service, as part of the feedback process.

### Returning Officer's Duties

The Returning Officer had a number of responsibilities which were central to the running of the election. Operational duties included:

- set up and decommissioning of a temporary office;
- training of office staff and Polling Place Managers;
- making arrangements for voting at polling places and Declared Institutions;
- issuing and processing postal and pre-poll votes;
- dealing with enquiries and complaints from candidates and the public;
- processing candidate nominations; and
- counting of votes and declaring the result of the election.

The Returning Officer's office for Wollongong City Council was located at:

Wollongong Town Hall &  
Community Centre  
93 Crown Street,  
Cnr Kembla Street  
WOLLONGONG NSW 2500

### Returning Officer Support Officer

A Returning Officer Support Officer (ROSO) was appointed in order to provide support on electoral matters and procedures in the conduct of the election. The appointed ROSO was an experienced former Returning Officer.

### Staffing

Staffing is a significant cost driver for elections and as such the NSWEC recognises the importance of accurately predicting the number of required staff while taking into consideration the associated costs without compromising the level of service to electors.

The level of staffing required at the Returning Officer's office varied during the different phases of the election. These staff were employed to administer a variety of tasks including:

- office setup;
- engaging polling place staff;
- packing materials for each polling place;
- registration, distribution and receipt of postal votes;



- operation of pre-poll voting;
- visits to Declared Institutions;
- counting of the votes; and
- office pack-up.

All polling places must have a minimum of two staff, one of whom is the Polling Place Manager. Staff roles at polling places are:

- Polling Place Manager:
  - manages the polling place and all polling place staff.
- Deputy Polling Place Manager:
  - assists Polling Place Manager running the polling place.
- Ordinary Issuing Officer:
  - issues ballot papers to enrolled electors (ordinary voters).
- Ballot Box Guard:
  - guards the ballot boxes;
  - ensures electors place completed ballot papers in ballot box before leaving the polling place;
  - indicates the exit for voters leaving the polling place; and
  - relieves ordinary vote issuing officers during breaks.
- Information Officer and Part Day Election Official:
  - controls queue and flow of electors to issuing tables;
  - deals with elector enquiries;
  - assists voters who require assistance;
  - keeps the polling place in a clean and tidy condition;
  - relieves ordinary vote issuing officers during breaks; and
  - assists the Polling Place Manager to issue declaration votes.

- Polling Place Assistant:
  - undertakes the sort and count of ballot papers and assists with packing up the polling place after close of voting.
- Councillor Count Manager:
  - sets up area within the polling place for the councillor count; and
  - manages the sort of groups, counts, batches, records and packs councillor ballot papers.

### **Polling Place Manager and Deputy Polling Place Manager**

The Polling Place Managers' and Deputy Polling Place Managers' training programme was developed by the NSWEC to assist in the understanding of their duties and responsibilities during voting hours and when conducting the count on election night. Polling Place Managers and Deputy Polling Place Managers attended a training session at the Returning Officer's office and completed an online training programme.

Face to face training for Polling Place Managers and Deputy Polling Place Managers was conducted by the Returning Officer in the week prior to election day.

Training, both face to face and online, was well received by Polling Place Managers and Deputy Polling Place Managers.

### **Election Officials**

The Returning Officer provided all election officials, part day election

---

officials and information officers with the *Election Officials Manual* prior to election day. The handbook contained an overview of their responsibilities, voting processes, tasks undertaken before voting started, and instructions on how to issue ordinary votes and election night activities including reconciliation of ballot papers and counting of the votes.

## Services to Electors

### Election Information Brochure

Wollongong City Council opted not to use an elector brochure for its enrolled electors.

### Braille Ballot Papers

Amendments to the *Local Government (General) Regulation (2005)* allowed for the introduction of Braille ballot papers for electors with vision impairment.

No Braille ballot papers were requested for electors at this election.

### Equal Access to Democracy/ Electors with a Disability

The NSWEC's Equal Access to Democracy Plan focuses on ways to improve services to, and participation in, the democratic process for people with a disability.

Recent changes to the Plan included:

- the provision of Braille ballot papers upon request for electors who are vision impaired;
- increased consultation with NSW government organisations such as the Department of Ageing, Disability and Home Care;
- increased website accessibility, including a page with information for electors with a disability; and
- review of the Returning Officer guidelines to include information on assisting electors who have a vision impairment, mental illness or intellectual disability.

These measures have been applied to this election.

### Non-voters

#### *Failure to Vote*

Under electoral legislation, the NSWEC was required to issue 'failure to vote' notices to those electors whose names were not marked off the electoral roll as having voted or as having provided a valid excuse. All electoral rolls marked at polling places and in the Returning Officer's office were scanned after election day to create a list of non-voters. The penalty for failing to vote without a valid reason at a Local Government election is \$55.00.

For this election 18,874 penalty notices were issued. Of these, 19% were issued to electors under 26 years of age.

---

## Services to Candidates and Political Parties

### Candidate Information Seminars

A candidate information seminar was conducted by the NSWEC to assist prospective candidates in their preparation for the election.

The seminar provided prospective candidates with the opportunity to clarify any issues with senior NSWEC staff. Major topics covered in the seminar included:

- election timetable;
- candidate eligibility criteria and how to nominate;
- groups of candidates and political party names on ballot papers;
- campaigning (election advertising, 'how-to-vote' material and public scrutiny of candidates);
- complaints handling by NSWEC;
- voting and counting ballot papers;
- scrutineers; and
- election funding obligations.

The seminar was advertised in local newspapers covering the council area.

The NSWEC's handbook "*Information for Candidates and Scrutineers in Local Government Elections*" was made available as was the "*Election Funding Handbook*" which explains candidates' obligations under the *Election Funding, Expenditure and Disclosures Act 1981*.

There were 62 prospective candidates who attended this seminar.

Candidates and other interested parties were appreciative of the opportunity to have the election process explained to them.

### How-to-vote material

All electoral material to be distributed by candidates or their representatives on election day must be registered by the NSWEC. Registration does not apply to posters, whether they are displayed before or on election day, nor is it required for material to be distributed before election day.

Candidates are required to provide an application form and a copy of each item to be registered. The NSWEC provided candidates with guidelines to assist them to meet the registration requirements. A candidate help line was also set up by the NSWEC to aid candidates. The NSWEC registered all how-to-vote material that met the requirements.

---

## Elections Costs

As prescribed in the Act the Electoral Commissioner conducts Local Government elections on behalf of councils on a full cost recovery basis. The NSWEC is not funded by the NSW Government for the conduct of the elections.

Key cost drivers for the election included:

- Election Official wages;
- Returning Officer wages;
- office accommodation for Returning Officer;
- information and technology support;
- polling places;
- number of electors in council area;
- mayoral election;
- newspaper and elector brochure advertising; and
- printing/materials for polling places.

To assist with budgeting, the NSWEC provided Wollongong City Council with an estimate of the costs for the conduct of their election. The final cost of NSWEC conducting the election was \$579,278 (GST exclusive).

This was made up of Local Government Elections Programme Management \$72,798; Finance Services \$4,940; Election Services \$471,580; Election Information Services \$7,400; Information Technology \$22,560.

## Future Directions

### Legislative

The NSWEC is currently providing submissions for the *Local Government (General) Amendment (Election Procedures) Regulation 2012*.

### Operational

#### Local Computer Count

The NSWEC computer counting software will be used in Returning Officers' offices at the Local Government elections to be held on Saturday, 8 September 2012.

#### Office Managers

The new innovation of a Senior Office Assistant, trained as a Returning Officer, has been enhanced and will be implemented at the Local Government Elections in 2012 in the form of an Office Manager for Returning Officers' offices.

#### Councillor Count Managers

For the Local Government Elections in 2012 the intention is to hire Councillor Count Managers to manage the Councillor Counts in polling places ensuring quicker counts in the polling places and results appearing sooner on the NSWEC election results website.

---

## Appendices

Appendix A: Enrolment/Non-residential Roll Advertisement .....	20
Appendix B: Nominations Advertisement.....	21
Appendix C: Polling Places and Candidates Advertisement (Page 1 of Advertisement).....	22
Appendix D: Declaration of Poll Advertisement .....	24
Appendix E: List of Nominated Candidates .....	25
Appendix F: Ballot papers .....	27
Appendix G: Polling Places and Initial Results .....	29
Appendix H: Distribution of Preferences .....	33

## WOLLONGONG CITY COUNCIL ELECTION Saturday, 3 September 2011

### Election of Mayor Election of 12 Councillors

## Enrol to vote

### Non-residential Rolls

If you are an owner, rate-paying lessee or occupier of rateable land which is not your primary residence, you or a nominee may be entitled to be enrolled on the roll of non-residential owners of rateable land or the roll of occupiers and rate-paying lessees for this election.

Details of the eligibility criteria and enrolment claim forms may be obtained from Wollongong City Council Office, 41 Burelli Street Wollongong, Phone: (02) 4227 7111, Fax: (02) 4227 7277, Website: [www.wollongong.nsw.gov.au](http://www.wollongong.nsw.gov.au) or will be forwarded to you upon request to the council.

The claim must be completed and lodged with the General Manager of Wollongong City Council on or before **6pm Monday, 25 July 2011**.

**If a claim for non-residential enrolment was made for a previous council election, and you wish to claim enrolment for this election, you must re-apply.**

### Residential Roll

All electors enrolled on the Commonwealth/State electoral roll as at **6pm Monday, 25 July 2011** residing in Wollongong City Council local government area will be included on the roll for the election.

To check your enrolment details or to obtain a residential enrolment form visit [www.elections.nsw.gov.au](http://www.elections.nsw.gov.au) or call 1300 135 736. Enrolment forms are also available from any Australia Post office. Enrolment forms must be received by **6pm Monday, 25 July 2011**.

**Voting in Local Government elections is compulsory for all electors included on the residential roll.**

**Information: [www.elections.nsw.gov.au](http://www.elections.nsw.gov.au) or 1300 135 736**


**For enquiries in languages other than English call our interpreting service 13 14 50**

**For hearing and speech impaired enquiries, call us via the National Relay Service on 13 36 77**

Colin Barry, Electoral Commissioner



**WOLLONGONG CITY COUNCIL ELECTION**  
**Saturday, 3 September 2011**



**Election of Lord Mayor**  
**Election of 12 Councillors**

**Nominate for Councillor or Lord Mayor**  
If you intend to nominate for Councillor or Lord Mayor it is important that you read this notice. As a candidate you have certain obligations and responsibilities under law. Check the website [www.elections.nsw.gov.au](http://www.elections.nsw.gov.au) and [www.efa.nsw.gov.au](http://www.efa.nsw.gov.au) for further details.

**How to nominate for election as Councillor**  
To nominate for Council, you must lodge a nomination form and \$125 nomination deposit by 12 noon Wednesday, 3 August 2011, with the Returning Officer.

**How to nominate for election as Lord Mayor**  
To nominate for Lord Mayor, you must lodge a nomination form and \$125 nomination deposit by 12 noon Wednesday, 3 August 2011, with the Returning Officer.

**A person who is a candidate for election as the Lord Mayor may also be a candidate for election as a Councillor.**

**Where do I get a nomination form?**  
Nomination forms and other important nomination and electoral information are available from the Returning Officer or from the New South Wales Electoral Commission website: [www.elections.nsw.gov.au](http://www.elections.nsw.gov.au)

**Candidate information sheets:** Every candidate is required to lodge the candidate information sheet which is included in the nomination form.

**Councillor grouping of candidates and group voting squares:** Two or more candidates may form a group and, in certain circumstances, request a group voting square on the ballot paper. A request to form a group must be lodged with the Returning Officer by 12 noon Wednesday, 3 August 2011.  
See [www.elections.nsw.gov.au](http://www.elections.nsw.gov.au) for the publication 'Handbook for Parties, Groups, Candidates and Scrutineers at Local Government elections' for more details.

**Where and when to nominate**  
Your nomination form and deposit must be lodged with the Returning Officer at Wollongong Town Hall and Community Centre, 93 Crown St (corner Kembla St) Wollongong, during council business hours 8.30am to 5.00pm from Monday, 25 July 2011 to 12 noon Wednesday, 3 August 2011.  
For enquiries about nominations call 1300 135 736.  
Vic Miglionico  
Returning Officer

**Work at the Wollongong/Shellharbour Elections**  
You can register your interest at [www.elections.nsw.gov.au/eol](http://www.elections.nsw.gov.au/eol) and view position descriptions, rates of pay and employment conditions. For enquiries call 1300 135 736.

**Information: [www.elections.nsw.gov.au](http://www.elections.nsw.gov.au) or 1300 135 736**  
**For enquiries in languages other than English call our interpreting service 13 14 50**  
**For hearing and speech impaired enquiries, call us via the National Relay Service on 13 36 77**

Appendix C: Polling Places and Candidates Advertisement  
(Page 1 of Advertisement)

WOLLONGONG CITY COUNCIL ELECTION Saturday, 3 September 2011			electoral commission NSW
Ward 1, Ward 2, Ward 3 Election of Lord Mayor and Election of 12 Councillors			
Candidates			
CANDIDATES - LORD MAYOR			
Name of Candidate	Name on Ballot Paper	Party Affiliation or Independent	
John Kevin DORAHY	DORAHY, John	LIBERAL	
Michael Keith ORGAN	ORGAN, Michael	Independent	
Vicki Therese CURRAN	CURRAN, Vicki	Independent	
Andrew James ANTHONY	ANTHONY, Andrew	Independent	
Christopher Robert CONNOR	CONNOR, Chris	LABOR	
Alice Beverley CARTAN	CARTAN, Alice	Independent	
Gregory Alan PETTY	PETTY, Greg	Independent	
Sandra Jill MERRIN	MERRIN, Jill	THE GREENS	
Shaun PRINCE	PRINCE, Shaun	Independent	
Roderick John OXLEY	OXLEY, Rod	Independent	
Gordon Alfred BRADBERRY	BRADBERRY, Gordon	Independent	
Julius KUDRYNSKI	KUDRYNSKI, Julius	Independent	
CANDIDATES - COUNCILLORS			
WARD 1			
Group	Name of Candidate	Name on Ballot Paper	Party Affiliation or Independent
Group A	Leigh Anthony COLACINO	COLACINO, Leigh	LIBERAL
	David Mark MCKENNA	MCKENNA, David	LIBERAL
	Lorraine Margaret RODDEN	RODDEN, Lorraine	LIBERAL
	Elizabeth Jennifer COLACINO	COLACINO, Jennie	LIBERAL
Group B	Sara Anne HOWSON	HOWSON, Sara	
	Bradley James LANG	LANG, Braden	
	Margaret Ann MORGAN	MORGAN, Ann	
Group C	Amy Jessica LINDLEY	LINDLEY, Amy	
	Janica Anne KERSHAW	KERSHAW, Janica	LABOR
Group D	Ian William HUNT	HUNT, Ian	LABOR
	John David HOBBS	HOBBS, John	LABOR
	Kate Patricia NICHOLLS	NICHOLLS, Kate	LABOR
Group E	Gregory Alan PETTY	PETTY, Greg	Independent
	Raymond Wilfred ROBINSON	ROBINSON, Ray	Independent
	Karen DINGDALE	DINGDALE, Karen	Independent
	Anthony John STODDART	STODDART, Tony	Independent
Group F	Brandie Gay PETTY	PETTY, Brandie	Independent
	Jessica Ruth MOORE	MOORE, Jess	
	Christopher Russell WILLIAMS	WILLIAMS, Chris	
Group G	Frances Catherine BURNHAM	BURNHAM, Frances	
	Lewis WILSON	WILSON, Lewis	
	Sandra Jill MERRIN	MERRIN, Jill	THE GREENS
Group H	Natasha WATSON	WATSON, Natasha	THE GREENS
	Gregory James SHAND	SHAND, Greg	THE GREENS
	Ian HILL	HILL, Ian	THE GREENS
Group I	Alice Beverley CARTAN	CARTAN, Alice	Independent
	Peter Alfred Harelich LEINER	LEINER, Peter	Independent
	Rhiannon MORGAN	MORGAN, Rhiannon	Independent
Group J	Alexander Robert PETERSON	PETERSON, Alex	Independent
	Gary Thomas CHAPMAN	CHAPMAN, Gary	Independent
Group K	Shaun PRINCE	PRINCE, Shaun	Independent
	Richard Mark TENHARE	TENHARE, Richard	Independent
WARD 2			
Group	Name of Candidate	Name on Ballot Paper	Party Affiliation or Independent
Group A	George Julian TNAACS	TNAACS, George	THE GREENS
	Care Elizabeth TUCKERMAN	TUCKERMAN, Care	THE GREENS
	Brendan James COOK	COOK, Brendan	THE GREENS
	Therese Mary Kathleen HIXTABLE	HIXTABLE, Therese	THE GREENS
Group B	Ian FARES	FARES, Ian	Independent
	Mark Stephen NORTH	NORTH, Mark	Independent
	Asim IQBAL	IQBAL, Asim	Independent
Group C	Robert Thomas WHEWRY	WHEWRY, Bob	Independent
	David Francis BROWN	BROWN, David	LABOR
	Alysha Dawn OLIVER	OLIVER, Alysha	LABOR
	Christopher William MONNIX	MONNIX, Chris	LABOR
Group D	Scott Paul DENTON	DENTON, Scott	LABOR
	Andrew James ANTHONY	ANTHONY, Andrew	Independent
	Kerry-Erin ANTHONY	ANTHONY, Kerry	Independent
	Benjamin John HUDSON	HUDSON, Ben	Independent
Group E	Andrew KYRACOU	KYRACOU, Andrew	Independent
	Robert Anthony CARR	CARR, Rob	
	Adam Richard JORDAN	JORDAN, Adam	
Group F	Scott David BURROWS	BURROWS, Scott	
	Sophie WILLIAMS	WILLIAMS, Sophie	
	John Kevin DORAHY	DORAHY, John	LIBERAL
Group G	Michelle Anne BUCAWIS	BUCAWIS, Michelle	LIBERAL
	Brandon Gerard BIRMINGHAM	BIRMINGHAM, Brandon	LIBERAL
	James FOSTER	FOSTER, James	LIBERAL
Group H	Ian Douglas YOUNG	YOUNG, Ian	Independent
	Sharon Leigh COUSINS	COUSINS, Sharon	Independent
	Iain David ADAMS	ADAMS, Iain	Shooters and Fishers
Group I	Damian FERRI	FERRI, Damian	Independent
WARD 3			
Group	Name of Candidate	Name on Ballot Paper	Party Affiliation or Independent
Group A	Vicki Therese CURRAN	CURRAN, Vicki	Independent
	Alice Dorothy SCOTT	SCOTT, Alice	Independent
	Helen Mary HAMILTON	HAMILTON, Helen	Independent
Group B	Benjamin William BANNER	BANNER, Ben	Independent
	Christopher Robert CONNOR	CONNOR, Chris	LABOR
	Ann Louise MARTIN	MARTIN, Ann	LABOR
Group C	Victoria Anne KING	KING, Vicki	LABOR
	Boris DIMIYEVSKI	DIMIYEVSKI, Boris	LABOR
	Bede Armand CRASNOIC	CRASNOIC, Bede	LIBERAL
Group D	James Ronald Heakon CHRISTENSEN	CHRISTENSEN, Jim	LIBERAL
	Bradley John HAWNS	HAWNS, Bradley	LIBERAL
	Denny-James HENLEY-MARTIN	HENLEY-MARTIN, Denny	LIBERAL
Group E	Adrianna Elizabeth TALBOT THOMSON	TALBOT THOMSON, Adrianna	
	Rolynna MURPHY	MURPHY, Rolynna	
	Kenneth Charles DAVIS	DAVIS, Ken	
Group F	Robert Bruce SUTHERLAND	SUTHERLAND, Robert	
	Romao CEDOHELE	CEDOHELE, Romao	Independent
	Bruno CONTE	CONTE, Bruno	Independent
Group G	William Trevor MOTT	MOTT, Trevor	Independent
	Jim George CLABOUR	CLABOUR, Jim	Independent
	Viola ALEXANDRA	ALEXANDRA, Viola	Independent
Group H	James Edward McDONNIGH	McDONNIGH, Jim	Independent
Group I	John MARKOWSKI	MARKOWSKI, John	Independent
CANDIDATE INFORMATION SHEET			
Electorals may view each candidate's information sheet at <a href="http://www.elections.nsw.gov.au">www.elections.nsw.gov.au</a>			



Appendix C (continued): Polling Places and Candidates Advertisement  
(Page 2 of Advertisement)

**WOLLONGONG CITY COUNCIL ELECTION**  
**Saturday, 3 September 2011**



**Ward 1, Ward 2, Ward 3**  
**Election of Lord Mayor and Election of 12 Councillors**

**Voting on Election Day**

Voting will take place on Saturday, 3 September 2011 between the hours of 8.00am and 6.00pm. If you are enrolled in the Wollongong City Council area you must vote at one of the polling places listed below for your ward.

To check your enrolment details and confirm which ward you are enrolled in visit [www.elections.nsw.gov.au](http://www.elections.nsw.gov.au) or call 1300 135 736.

**Polling Places** W= Wheelchair accessible. For information regarding accessibility please call 1300 135 736.

WARD 1		
Locality	Venue Name	Address
W Austimmer	Austimmer Anglican Church	49 - 51 Moore Street
Balgownie	Balgownie Public School	Balgownie Road
Balgownie	Balgownie Village Community Centre	113 Balgownie Road
W Bull	Bull Police And Citizens Youth Club	253 Princes Highway
Bull	Bull Public School	Polio Street
Coakliff	Coakliff Community Hall	Lawrence Hargrave Dr
Coledale	Coledale Public School	699 Lawrence Hargrave Dr
Carrialla	Carrialla Anglican Church	121 Princes Highway
Carrialla	Carrialla High School	Murray Road
Fairy Meadow	Fairy Meadow Demonstration School	Balgownie Road
Femhill	Femhill Guide Hall	2 Douglas Road
Halesburg	Halesburg Community Centre	26 Walker Street
W Halesburg	Halesburg Public School	Fletcher Street
Bellambi	Holy Spirit College Bellambi	2 Cawley Street
Fairy Meadow	Mount Dunsay Public School	31 McGrath Street
Otford	Otford Public School	Station Road
Russell Vale	Russell Vale Public School	Toronto Street
Womburne	Scarborough Womburne Surf Life Saving Club	Murrah Street
Thirroul	St Michael's Primary School	Station Street
Starwell Park	Starwell Park Anglican Church	Starwell Avenue
Tarawanna	Tarawanna Public School	Meadow Street
W Thirroul	Thirroul District Centre and Library	352 Lawrence Hargrave Dr
Fairy Meadow	Townsend Public School	Carlton Lane
W Wollongong	Wollongong Hospital - Level 8 Auditorium Block C	Crown Street
W Wollongong	Wollongong Town Hall	93 Crown Street
Woonona	Woonona East Public School	Royal Crescent
Woonona	Woonona Guide Hall	Strachen Park, Ball Street
Woonona	Woonona Public School	Gray Street

WARD 2		
Locality	Venue Name	Address
Balgownie	Balgownie Public School	Balgownie Road
Balgownie	Balgownie Village Community Centre	113 Balgownie Road
W Carleton	Carleton Public School	Auburn Street
Mount Keira	Edmund Rice College	112 Mt Keira Road
Fairy Meadow	Fairy Meadow Demonstration School	Balgownie Road
Unanderra	Farmborough Road Public School	Farmborough Road
Figtree	Figtree Heights Public School	St Georges Avenue
Figtree	Figtree High School	Gibsons Road
Gwynnville	Gwynnville Public School	10a Acacia Avenue
Kairiwillie	Kairiwillie Public School	286 Gipps Road
West Wollongong	Linbeck Park Public School	49 Thomas Street
Mount Kembla	Mount Kembla Public School	Cordeaux Road
Fairy Meadow	Mount Dunsay Public School	31 McGrath Street
Mount St Thomas	Mount St Thomas Public School	Taronga Avenue
Wollongong	Smiths Hill High School	The Citadel, Campbell Street
Unanderra	St Plus X School Hall Unanderra	Cummins Street
West Wollongong	St Thomas School Hall West Wollongong	Powell Street
Wollongong	WFE NSW Ilwara Institute Wollongong West	Rawlinson Avenue
W Cordoba Heights	Unanderra Public School	49 Darrington Drive
W Wollongong	Wollongong Hospital - Level 8 Auditorium Block C	Crown Street
W Wollongong	Wollongong Town Hall	93 Crown Street

WARD 3		
Locality	Venue Name	Address
W Berekley	Berekley Community Centre	Wynima Way
W Berekley	Berekley Public School	Flagstaff Road
W Berekley	Berekley West Public School	Nolan Street
W Chingiz	Chingiz Community Hall	32 - 40 Lako Avenue
W Horsley	Deplo Public School	Siana Drive
W Deplo	Deplo Ribbonwood Centre	99 Princes Highway
Unanderra	Farmborough Road Public School	Farmborough Road
Figtree	Figtree High School	Gibsons Road
Kandooka	Ridge Park Public School	Kandooka Road
W Horsley	Horsley Community Centre	82 Bung Bong Road
Port Kembla	Nowara Senior College	Military Road
Koonawarra	Koonawarra Community Hall	36 Fowlers Road
W Lako Heights	Lako Heights Public School	302 Northcliffe Drive
W Deplo	Lakelands Public School	Parkside Drive
W Deplo	Mount Brown Public School	Mount Brown Road
Mount St Thomas	Mount St Thomas Public School	Taronga Avenue
W Port Kembla	Port Kembla Senior Citizens Centre	Allan Street
Primbaw	Primbaw Public School	Howra Crescent
W Deplo	St Lukes Anglican Church Hall Deplo	Prince Edward Drive
W Warrawong	Warrawong Community Hall	Gwyno Street
Warrawong	Warrawong Public School	Cowbar Street
Windsong	Windsong Senior Citizens Centre	50 Kurrajong Street
W Wollongong	Wollongong Hospital - Level 8 Auditorium Block C	Crown Street
W Wollongong	Wollongong Town Hall	93 Crown Street

**Voting before Election Day**

**Postal Voting and Pre-Poll Voting**

You may be entitled to a postal or pre-poll vote. For details check [www.elections.nsw.gov.au](http://www.elections.nsw.gov.au) or call 1300 135 736.

**Pre-Poll Voting in Person**

You can vote in person at the following locations and times:

**Wollongong City Council Pre-Poll**

Returning Officer's Office, Wollongong Town Hall & Community Centre, 93 Crown St (corner Kembla St), Wollongong.

**Deplo Pre-Poll**

Community Office 1, Deplo Ribbonwood Centre, 99 - 109 Princes Highway, Deplo.

**Thirroul Pre-Poll**

Black Diamond Room, Thirroul District Community Centre & Library, 352 Lawrence Hargrave Drive, Thirroul.  
Monday, 27 August 2011 - Friday, 26 August 2011, 8.30am to 5.00pm  
Monday, 29 August 2011 - Thursday, 1 September 2011, 8.30am to 5.00pm  
Friday, 2 September 2011, 8.30am to 6.00pm

**Voting by Post**

Postal vote applications are available from [www.elections.nsw.gov.au](http://www.elections.nsw.gov.au) the Returning Officer, the Council office or by calling 1300 135 736. Completed application forms must be received by the Returning Officer, PO Box 358 Wollongong NSW 2520 by (12) 0900 5293, not later than 5.00pm Monday, 29 August 2011.

**Voting is Compulsory**

Voting is compulsory for all electors. The penalty for not voting is \$65.

**Work at the Wollongong/Shellharbour Elections**

We are looking for people to work at polling places on election day. You can register your interest at [www.elections.nsw.gov.au/eoi](http://www.elections.nsw.gov.au/eoi) and view position descriptions, rates of pay and employment conditions. For enquiries call 1300 135 736.


**Vic Miglionico**

Returning Officer for Wollongong City Council

Information: [www.elections.nsw.gov.au](http://www.elections.nsw.gov.au) or 1300 135 736

For enquiries in languages other than English call our interpreting service 13 14 50

For hearing and speech impaired enquiries, call us via the National Relay Service on 13 36 77



**WOLLONGONG CITY COUNCIL ELECTION**  
**Held Saturday, 3 September 2011**

**Result of Election**

An election was held to elect a Lord Mayor. I declare **BRADBERRY, Gordon** elected as Lord Mayor until the next ordinary election of the Council in 2016.

An election was held to elect 12 Councillors. I declare the following elected as Councillors until the next ordinary election of the Council in 2016.

WARD 1	WARD 2	WARD 3
<b>COLACINO, Leigh</b>	<b>DORAHY, John</b>	<b>CONNOR, Chris</b>
<b>KERSHAW, Janice</b>	<b>BROWN, David</b>	<b>CRASNICH, Bede</b>
<b>MERRIN, Jill</b>	<b>BLICAVS, Michelle</b>	<b>MARTIN, Ann</b>
<b>PETTY, Greg</b>	<b>TAKACS, George</b>	<b>CURRAN, Vicki</b>

Detailed results are available from the NSW Electoral Commission website and are available for inspection at the Council.

Vic Miglionico  
Returning Officer for Wollongong City Council  
Date: 8th September 2011

**Information: [www.elections.nsw.gov.au](http://www.elections.nsw.gov.au) or 1300 135 736**  
For enquiries in languages other than English call our interpreting service 13 14 50  
For hearing and speech impaired enquires, call us via the National Relay Service on 13 36 77

---

## Appendix E: List of Nominated Candidates

### Lord Mayor Candidates

ANTHONY, Andrew	KUDRYNSKI, Julius
BRADBERRY, Gordon	MERRIN, Jill
CARTAN, Alice	ORGAN, Michael
CONNOR, Chris	OXLEY, Rod
CURRAN, Vicki	PETTY, Greg
DORAHY, John	PRINCE, Shaun

### Ward 1 Councillor Candidates

BURNHAM, Frances	LANG, Braden	PETTY, Greg
CARTAN, Alice	LEINER, Peter	PRINCE, Shaun
CHAPMAN, Gary	LINDLEY, Amy	ROBINSON, Ray
COLACINO, Jennie	McKENNA, David	RODDEN, Lorraine
COLACINO, Leigh	MERRIN, Jill	SHAND, Greg
DINSDALE, Karen	MOORE, Jess	STODDART, Tony
HILL, Ian	MORGAN, Ann	TENHAVE, Richard
HOBBS, John	MORGAN, Rhiannon	WATSON, Natasha
HOWSON, Sara	NICHOLLS, Kain	WILLIAMS, Chris
HUNT, Ian	PETERSON, Alex	WILSON, Lewis
KERSHAW, Janice	PETTY, Brenda	

---

## Appendix E (continued): List of Nominated Candidates


### Ward 2 Councillor Candidates

ADAMS, Iain	COUSINS, Sharon	KYRIACOU, Andrew
ANTHONY, Andrew	DENTON, Scott	MONNOX, Chris
ANTHONY, Kerry	DORAHY, John	NORTH, Mark
BERMINGHAM, Brendan	FARES, Len	OLIVER, Alysha
BLICAVS, Michelle	FERRI, Damien	TAKACS, George
BROWN, David	FOSTER, James	TUCKERMAN, Clare
BURROWS, Scott	HUDSON, Ben	WHEWAY, Bob
CARR, Rob	HUXTABLE, Theresa	WILLIAMS, Sophie
COOK, Brendan	IQBAL, Asim	YOUNG, Ian
	JORDAN, Adam	


### Ward 3 Councillor Candidates

ALEKSOSKA, Violeta	DAVIS, Ken	McDONOUGH, Jim
BAANER, Ben	DIMEVSKI, Boris	MOTT, Trevor
CECCELE, Romeo	HAMILTON, Helen	MURPHY, Robynne
CHRISTENSEN, Jim	HANNS, Bradley	SCOTT, Alice
CLABOUR, Jim	HENLEY-MARTIN, Danny	SUTHERLAND, Robert
CONNOR, Chris	KING, Vicky	TALBOT THOMSON, Adrienne
CONTE, Bruno	MARKOVSKI, John	
CRASNICH, Bede	MARTIN, Ann	
CURRAN, Vicki		

Lord Mayor Ballot Paper



**Wollongong City Council Election**  
**BALLOT PAPER FOR**  
**ELECTION OF LORD MAYOR**  
Held on 3 September 2011


 **DIRECTIONS FOR VOTING**  
**PLEASE READ CAREFULLY**

Place the number "1" in the square next to the candidate of your choice. If you wish to vote for any more candidates, place consecutive numbers starting with "2" in the squares next to those candidates in order of your preferences for them.

**CANDIDATES**

<input type="checkbox"/>	<b>DORAHY, John</b> LIBERAL
<input type="checkbox"/>	<b>ORGAN, Michael</b> Independent
<input type="checkbox"/>	<b>CURRAN, Vicki</b> Independent
<input type="checkbox"/>	<b>ANTHONY, Andrew</b> Independent
<input type="checkbox"/>	<b>CONNOR, Chris</b> LABOUR
<input type="checkbox"/>	<b>CARTAN, Alice</b> Independent
<input type="checkbox"/>	<b>PETTY, Greg</b> Independent
<input type="checkbox"/>	<b>MERRIN, Jill</b> THE GREENS
<input type="checkbox"/>	<b>PRINCE, Shaun</b> Independent
<input type="checkbox"/>	<b>OXLEY, Rod</b> Independent
<input type="checkbox"/>	<b>BRADBERRY, Gordon</b> Independent
<input type="checkbox"/>	<b>KUDRYNSKI, Julius</b> Independent

YOU MUST NOT TAKE A BALLOT PAPER OUT OF THE POLLING PLACE



Appendix F (continued): Ballot papers

Ward 1 Councillors Ballot Paper

**You may vote in one of two ways: either**

Place the number "1" in the square above the group of candidates for whom you wish to vote. If you wish to vote for additional candidates, place consecutive numbers beginning with the number "2" in the squares above the additional groups of candidates in order of your preference for them.

**OR**

Place the numbers "1" and "2" in the squares next to 2 candidates in order of your preference for them. If you wish to vote for any more candidates, place consecutive numbers starting with "3" in the squares next to those candidates in order of your preference for them.

**BALLOT PAPER FOR ELECTION OF 4 COUNCILLORS WARD ONE WOLLONGONG CITY COUNCIL ELECTION** Held on 3 September 2011

GROUP A	GROUP B	GROUP C	GROUP D	GROUP E	GROUP F	GROUP G
<input type="checkbox"/> LIBERAL	<input type="checkbox"/>	<input type="checkbox"/> LABOR	<input type="checkbox"/>	<input type="checkbox"/>	<input type="checkbox"/> THE GREENS	<input type="checkbox"/>
<input type="checkbox"/> GROUP A COLACINO, Leigh LABOR	<input type="checkbox"/> GROUP B HENDERSON, Sara LABOR	<input type="checkbox"/> GROUP C MCDONNELL, Jordan LABOR	<input type="checkbox"/> GROUP D PETTY, Craig Independent	<input type="checkbox"/> GROUP E MOORE, Jim LABOR	<input type="checkbox"/> GROUP F NEWMAN, Jill THE GREENS	<input type="checkbox"/> GROUP G CRIVELLO, Alex Independent
<input type="checkbox"/> GROUP A MORROW, David LABOR	<input type="checkbox"/> GROUP B LAME, Graham LABOR	<input type="checkbox"/> GROUP C HART, Ian LABOR	<input type="checkbox"/> GROUP D FERGUSON, Ray Independent	<input type="checkbox"/> GROUP E WILLIAMS, Chris LABOR	<input type="checkbox"/> GROUP F MAYSON, Malcolm THE GREENS	<input type="checkbox"/> GROUP G LEUNG, Peter Independent
<input type="checkbox"/> GROUP A ROOSEN, Loraine LABOR	<input type="checkbox"/> GROUP B MORROW, Ann LABOR	<input type="checkbox"/> GROUP C HOBBS, John LABOR	<input type="checkbox"/> GROUP D ORSCOLE, Brian Independent	<input type="checkbox"/> GROUP E SIMPSON, Florence LABOR	<input type="checkbox"/> GROUP F SHAW, Craig THE GREENS	<input type="checkbox"/> GROUP G MORROW, Florence Independent
<input type="checkbox"/> GROUP A COLACINO, Joanne LABOR	<input type="checkbox"/> GROUP B LINDLEY, Amy LABOR	<input type="checkbox"/> GROUP C WICKKES, Kim LABOR	<input type="checkbox"/> GROUP D STOODART, Tony Independent	<input type="checkbox"/> GROUP E WILSON, Leah LABOR	<input type="checkbox"/> GROUP F HILL, Bev THE GREENS	<input type="checkbox"/> GROUP G PETERSON, Alan Independent

**YOU MUST NOT TAKE A BALLOT PAPER OUT OF THE POLLING PLACE**

Ward 2 Councillors Ballot Paper

**You may vote in one of two ways: either**

Place the number "1" in the square above the group of candidates for whom you wish to vote. If you wish to vote for additional candidates, place consecutive numbers beginning with the number "2" in the squares above the additional groups of candidates in order of your preference for them.

**OR**

Place the numbers "1" and "2" in the squares next to 2 candidates in order of your preference for them. If you wish to vote for any more candidates, place consecutive numbers starting with "3" in the squares next to those candidates in order of your preference for them.

**BALLOT PAPER FOR ELECTION OF 4 COUNCILLORS WARD TWO WOLLONGONG CITY COUNCIL ELECTION** Held on 3 September 2011

GROUP A	GROUP B	GROUP C	GROUP D	GROUP E	GROUP F
<input type="checkbox"/> THE GREENS	<input type="checkbox"/>	<input type="checkbox"/> LABOR	<input type="checkbox"/>	<input type="checkbox"/>	<input type="checkbox"/> LIBERAL
<input type="checkbox"/> GROUP A SMACK, George THE GREENS	<input type="checkbox"/> GROUP B EVES, Lee Independent	<input type="checkbox"/> GROUP C DREWELL, David LABOR	<input type="checkbox"/> GROUP D BENTLEY, Andrew Independent	<input type="checkbox"/> GROUP E CROFT, Neil LABOR	<input type="checkbox"/> GROUP F DUNN, John LABOR
<input type="checkbox"/> GROUP A SUGDENHILL, Chris THE GREENS	<input type="checkbox"/> GROUP B WYATT, Mark Independent	<input type="checkbox"/> GROUP C SLEWY, Aisha LABOR	<input type="checkbox"/> GROUP D MURPHY, Kerry Independent	<input type="checkbox"/> GROUP E JERRAS, Adam LABOR	<input type="checkbox"/> GROUP F SLOVIN, Michelle LABOR
<input type="checkbox"/> GROUP A COOK, Stewart THE GREENS	<input type="checkbox"/> GROUP B GILL, John Independent	<input type="checkbox"/> GROUP C MORROW, David LABOR	<input type="checkbox"/> GROUP D WELCH, Ian Independent	<input type="checkbox"/> GROUP E SIMPSON, Scott LABOR	<input type="checkbox"/> GROUP F SIMPSON, Bruce LABOR
<input type="checkbox"/> GROUP A HICKMAN, Theresa THE GREENS	<input type="checkbox"/> GROUP B WELBY, Ben LABOR	<input type="checkbox"/> GROUP C SANTON, Sue LABOR	<input type="checkbox"/> GROUP D KYRACIL, Andrew Independent	<input type="checkbox"/> GROUP E WILLIAMS, Stephen LABOR	<input type="checkbox"/> GROUP F FEUER, James LABOR

**YOU MUST NOT TAKE A BALLOT PAPER OUT OF THE POLLING PLACE**

Ward 3 Councillors Ballot Paper

**You may vote in one of two ways: either**

Place the number "1" in the square above the group of candidates for whom you wish to vote. If you wish to vote for additional candidates, place consecutive numbers beginning with the number "2" in the squares above the additional groups of candidates in order of your preference for them.

**OR**

Place the numbers "1" and "2" in the squares next to 2 candidates in order of your preference for them. If you wish to vote for any more candidates, place consecutive numbers starting with "3" in the squares next to those candidates in order of your preference for them.

**BALLOT PAPER FOR ELECTION OF 4 COUNCILLORS WARD THREE WOLLONGONG CITY COUNCIL ELECTION** Held on 3 September 2011

GROUP A	GROUP B	GROUP C	GROUP D	GROUP E	GROUP F
<input type="checkbox"/>	<input type="checkbox"/> LABOR	<input type="checkbox"/> LIBERAL	<input type="checkbox"/>	<input type="checkbox"/>	<input type="checkbox"/>
<input type="checkbox"/> GROUP A CERINA, Sam Independent	<input type="checkbox"/> GROUP B COMBELL, Chris LABOR	<input type="checkbox"/> GROUP C CRANFORD, Neil LIBERAL	<input type="checkbox"/> GROUP D MULOT BOMSON, Andrew LABOR	<input type="checkbox"/> GROUP E CLEGG, Frances Independent	<input type="checkbox"/> GROUP F MUTT, Irene Independent
<input type="checkbox"/> GROUP A SCOTT, Alan Independent	<input type="checkbox"/> GROUP B MARTIN, Ann LABOR	<input type="checkbox"/> GROUP C DEWINTER, Ben LABOR	<input type="checkbox"/> GROUP D MURPHY, Patsyann LABOR	<input type="checkbox"/> GROUP E COVEY, Brian Independent	<input type="checkbox"/> GROUP F CLARKE, Ben Independent
<input type="checkbox"/> GROUP A HARRISON, Helen Independent	<input type="checkbox"/> GROUP B GILL, Ruth LABOR	<input type="checkbox"/> GROUP C JAMES, Bradley LABOR	<input type="checkbox"/> GROUP D JARR, Kim LABOR	<input type="checkbox"/> GROUP E	<input type="checkbox"/> GROUP F ALEXANDER, Victoria Independent
<input type="checkbox"/> GROUP A BARNES, Ben Independent	<input type="checkbox"/> GROUP B BREVINS, Sarah LABOR	<input type="checkbox"/> GROUP C MELLYMAN, Barry LABOR	<input type="checkbox"/> GROUP D MUTERANS, Robert LABOR	<input type="checkbox"/> GROUP E	<input type="checkbox"/> GROUP F MCDONNELL, Jim Independent

**YOU MUST NOT TAKE A BALLOT PAPER OUT OF THE POLLING PLACE**

Appendix G: Polling Places and Initial Results

# Election Night Results



## LORD MAYOR - By Polling Place

COUNCIL	Wollongong City
WARD	Undivided
ELECTION DAY	Saturday, 3 September 2011

Current as at: 6/09/2011 10:17

Polling Place	CORRY, John	GRIGG, Michael	CLISSOLD, Noel	ANTHONY, Andrew	CONNOR, Chris	CARYAK, Ailie	PETTY, Greg	MASON, Jill	PHILLIPS, Sharon	DALEY, Ross	BROADBENT, Graham	KUOPREINEN, Jukka	Formal Votes	Informal	Total Votes
Australian Anglican	119	93	11	7	69	35	24	170	25	12	262	2	826	23	849
Balgownie Public	400	58	18	7	185	12	22	82	29	57	511	9	1,370	57	1,427
Balgownie Village Comm. Cntr	567	87	34	20	314	27	50	110	39	91	803	20	2,254	120	2,374
Berkeley Comm. Centre	137	16	62	5	231	18	4	9	8	11	299	5	803	64	867
Berkeley Public	324	30	95	18	459	33	5	40	19	45	627	25	1,720	139	1,859
Berkeley W Public	244	45	107	23	309	18	7	34	15	41	505	21	1,569	109	1,678
Bull PCYC	547	308	30	17	315	72	55	237	60	58	785	18	2,402	133	2,535
Bull Public	156	77	8	2	120	23	27	78	17	9	203	6	726	20	746
Coastall Hall	37	8	0	0	7	7	19	33	1	3	17	0	134	4	138
Coastale Public	251	131	6	6	123	42	40	140	23	16	178	1	908	38	946
Corvitas Public	342	61	36	72	354	29	13	97	27	37	511	22	1,801	142	1,943
Corrimal Anglican	531	117	37	28	388	29	51	137	50	46	736	11	2,161	179	2,340
Corrimal High	817	159	32	29	553	29	63	170	48	82	996	11	2,787	229	3,016
Cringla Hall	217	27	33	21	430	18	4	34	13	18	211	10	1,030	189	1,219
Dapto	177	13	18	4	185	7	1	12	10	11	225	5	868	43	911
Dapto Ribbonwood Cntr	585	71	133	22	558	33	12	82	29	69	874	15	2,483	188	2,671
Edmond Rice College	281	34	10	29	126	11	10	87	20	29	404	12	1,033	55	1,088
Fairy Meadow Public	517	82	13	17	388	32	37	144	22	46	554	21	1,873	127	2,000
Farrborough Rd Public	640	69	64	105	494	17	19	124	19	81	1108	22	2,762	182	2,944
Fernhill Guide Hall	164	37	11	5	144	7	18	36	12	16	297	2	748	38	787
Figtree Hgts Public	382	45	23	47	178	15	11	64	20	31	821	8	1,452	44	1,496
Figtree Hgts	765	67	59	159	454	37	12	122	38	72	1062	22	2,899	170	3,069
Geynesville Public	215	85	11	18	205	14	8	64	15	35	441	10	1,131	47	1,178
Hayes Park Public	487	48	54	6	549	34	13	65	29	57	698	9	2,280	139	2,419
Helesburgh Comm. Cntr	779	70	16	7	375	58	67	220	3	20	174	5	2,379	144	2,523
Helesburgh Public	210	20	4	6	115	6	158	69	4	5	54	2	653	33	686
Holy Spirit Belmont	177	53	21	6	327	8	40	67	21	13	261	0	1,020	58	1,078
Horsley Comm. Cntr	626	67	62	25	637	24	19	52	19	74	976	25	2,800	199	2,999
Ilwama Str Cntr	180	37	20	6	283	7	3	25	9	33	300	6	915	41	956
Keiravale Public	514	86	32	61	247	30	20	207	32	72	949	19	2,289	95	2,384
Koonawarra Comm. Hall	396	58	103	17	632	32	13	67	20	47	544	12	1,941	155	2,096
Lake Hgts Public	263	37	100	10	313	8	5	30	14	50	318	11	1,157	87	1,244
Lakelands Public	280	51	31	9	385	12	5	32	10	25	463	8	1,291	88	1,379
Lindsay Park Public	500	52	41	57	232	44	16	90	35	49	807	13	1,933	69	2,002
Mc Brown Public	485	34	41	20	415	19	20	48	21	48	616	22	1,789	140	1,929
Mc Kermela Public	89	21	8	26	63	5	5	22	4	16	229	4	492	12	504
Mc Outley Public	442	78	18	15	211	23	40	95	37	66	675	13	1,713	71	1,784
Mc St Thomas Public	332	61	30	58	184	20	14	91	19	58	726	17	1,818	101	1,919
Oldford Public	47	19	1	0	12	3	37	56	0	5	15	1	176	1	177
Port Kembla Str Cntr	245	47	83	23	518	18	13	48	16	27	338	32	1,414	108	1,522
Primbey Public	195	13	48	11	228	8	0	13	14	28	378	8	943	83	1,026
Russell Vale Public	247	53	16	10	333	22	45	68	33	34	480	9	1,280	75	1,355
Scarborough-Wombarna SLSC	33	19	2	0	28	4	0	30	3	3	66	2	202	9	211
Smiths Hill High	601	88	32	63	292	31	21	179	59	97	912	20	2,395	117	2,512
St Lukes Dapto	313	33	54	10	359	12	9	31	12	27	484	15	1,259	82	1,341
St Michaels Theroul	189	85	12	3	99	79	25	109	27	15	242	3	888	42	930
St Pius X Uranderra	512	49	49	112	425	17	25	80	37	40	871	27	2,244	127	2,371
St Therese W Wollongong	276	35	20	51	150	6	7	66	11	53	351	11	1,037	49	1,086
Stanwell Park Anglican	183	40	7	1	45	18	50	116	0	7	98	0	505	29	534
Tarravanna Public	405	89	11	6	327	14	20	101	24	45	661	20	1,703	71	1,774
Theroul District Cntr	338	55	24	6	179	143	52	251	71	30	565	12	1,817	77	1,894
Township Public	399	72	36	22	393	27	43	96	30	61	581	14	1,744	88	1,832
Urunderra Public	493	33	42	78	274	21	17	73	29	62	888	26	1,931	100	1,931
Warawong Hall	348	51	55	11	474	14	8	38	13	33	191	14	1,249	134	1,383
Warawong Public	282	33	57	21	581	10	9	47	10	62	197	44	1,333	141	1,474
Walsing Str Cntr	331	27	115	6	297	5	10	33	7	23	542	9	1,404	84	1,488
Wollongong Hospital	72	22	7	7	84	12	3	30	10	8	132	3	400	18	418
Wollongong Town Hall	681	123	63	62	421	51	26	286	63	109	1073	33	2,993	204	3,197
Wollongong W TAFE	172	24	13	21	189	19	2	52	10	30	214	11	757	46	803
Woonona E Public	439	95	28	7	374	42	35	115	40	40	577	13	1,805	89	1,894
Woonona Guide Hall	380	89	18	11	241	48	28	120	52	23	493	7	1,506	64	1,570
Woonona Public	375	89	25	7	239	25	37	92	53	32	834	8	1,618	85	1,702
<b>Total Formal Votes</b>	<b>21,473</b>	<b>3,726</b>	<b>2,252</b>	<b>1,541</b>	<b>18,112</b>	<b>1,519</b>	<b>2,066</b>	<b>8,391</b>	<b>1,456</b>	<b>2,437</b>	<b>31,108</b>	<b>792</b>	<b>91,873</b>	<b>5,688</b>	<b>97,561</b>
% Formal	23.4%	4.1%	2.5%	1.7%	19.7%	1.7%	2.2%	5.9%	1.6%	2.7%	33.9%	0.9%	100.0%	5.8%	
Declared Institutions/Prepoll	2,315	490	227	148	5,878	288	183	565	150	209	4,766	64	13,258	212	13,570
Postal	678	130	65	19	583	51	36	113	22	84	1,368	20	3,155	22	3,177
Section/Secret	31	7	3	4	20	1	4	19	1	2	33	1	128	1	129
<b>Total Declaration Votes</b>	<b>3,023</b>	<b>627</b>	<b>295</b>	<b>171</b>	<b>2,459</b>	<b>341</b>	<b>203</b>	<b>897</b>	<b>178</b>	<b>365</b>	<b>6,167</b>	<b>85</b>	<b>14,841</b>	<b>235</b>	<b>14,876</b>
% Formal Declaration	20.6%	4.3%	2.0%	1.2%	15.8%	2.3%	1.4%	4.8%	1.2%	2.7%	42.1%	0.6%	100.0%	1.0%	100.0%
<b>TOTAL</b>	<b>24,496</b>	<b>4,353</b>	<b>2,547</b>	<b>1,712</b>	<b>20,571</b>	<b>1,860</b>	<b>2,269</b>	<b>9,288</b>	<b>1,634</b>	<b>2,832</b>	<b>37,275</b>	<b>877</b>	<b>106,514</b>	<b>5,921</b>	<b>112,435</b>
% Total	23.0%	4.1%	2.4%	1.6%	19.3%	1.7%	2.1%	6.7%	1.6%	2.7%	35.0%	0.8%	100.0%	5.3%	
Number on Roll	135,468												% of enrolled		83.0%









## Appendix H: Distribution of Preferences

### Lord Mayor

LG.578  
Current as at: 09/09/2011 16:33

### Distribution of Preferences Countsheet

Wollongong City | MAYOR | Saturday, 3 September 2011

Candidates	Count 1 KUDRYNSKI, Julius		Count 2 PRINCE, Shaun		Count 3 MERRIN, Jill		Count 4 CARTAN, Alice		Count 5 PETTY, Greg		Count 6 DORAHY, John		Count 7 CURRAN, Vicki		Count 8 ORGAN, Michael	
	Excluded	Valid	Excluded	Valid	Excluded	Valid	Excluded	Valid	Excluded	Valid	Excluded	Valid	Excluded	Valid	Excluded	Valid
DORAHY, John	34,036	36	34,036	95	34,036	88	34,770	51	24,827	115	34,342	214	25,158	136	25,296	
ORGAN, Michael	4,236	17	4,233	38	4,389	42	4,431	76	4,897	96	4,802	20	4,852	257	4,816	
CURRAN, Vicki	2,842	21	2,863	28	3,811	291	3,842	70	2,802	238	3,198	42	2,238			
ANTHONY, Andrew	1,796	8	1,718	19	1,727											
CONNOR, Chris	30,635	16	30,653	53	30,705	87	30,792	65	25,857	80	26,837	113	21,847	124	21,171	
CARTAN, Alice	1,842	11	1,874	25	1,899	40	1,939									
PETTY, Greg	2,270	12	2,282	38	2,319	21	2,340	368	2,708							
MERRIN, Jill	5,199	16	5,199	23	5,149	27	5,175	82	6,257	106	6,293	48	6,411	278	6,899	
PRINCE, Shaun	1,529	11	1,540													
OXLEY, Rod	2,640	12	2,835	41	2,896	11	2,907	15	2,920	26	2,948					
BRADBURY, Gordon	27,283	112	27,496	188	27,822	118	27,892	149	27,849	452	28,421	211	28,712	212	28,824	
KUDRYNSKI, Julius	846															
Total Valid Votes	198,780	382	198,178	841	198,077	112	198,052	877	202,996	1,111	201,292	773	98,217	1,801	96,880	
Unallocated Votes	5,706	804	5,706	1,008	5,706	1,025	5,738	1,962	3,796	1,888	3,338	2,175	7,542	2,227	6,896	
Total Invalid Votes	112,986	836	112,986	1,446	112,986	1,727	112,986	1,929	112,986	2,759	112,986	2,948	112,986	3,229	112,986	
Abstain Regularly	51,291		51,888		52,526		52,827		53,488		54,097		49,009		48,491	

Congratulations, election complete.

BRADBURY, Gordon has been elected.

Wollongong City | Mayor | Saturday, 3 September 2011

LG.578  
Current as at: 09/09/2011 16:24

### Distribution of Preferences Countsheet

Wollongong City | MAYOR | Saturday, 3 September 2011

Candidates	Count 9 ORGAN, Michael		Count 10 MERRIN, Jill		Count 11 OXLEY, Rod		Count 12		Count 13		Count 14	
	Excluded	Valid	Excluded	Valid	Excluded	Valid	Excluded	Valid	Excluded	Valid	Excluded	Valid
DORAHY, John	259	25,874	178	25,748	1,618	27,167						
ORGAN, Michael												
CURRAN, Vicki												
ANTHONY, Andrew												
CONNOR, Chris	391	21,872	778	22,299								
CARTAN, Alice												
PETTY, Greg												
MERRIN, Jill	637	7,298										
PRINCE, Shaun												
OXLEY, Rod												
BRADBURY, Gordon	1,203	40,127	2,129	42,247	4,512	49,199	10,427	51,915				
KUDRYNSKI, Julius												
Total Valid Votes	2,389	94,489	3,073	90,248	6,938	73,926						
Unallocated Votes	2,811	12,211	4,223	16,534	16,328	32,854						
Total Invalid Votes	5,706	5,706	5,706	5,706	5,706	5,706						
Total Votes	4913	112,496	7,298	112,496	22,256	112,496						
Abstain Regularly	47,226		45,124		38,954							

Congratulations, election complete.

BRADBURY, Gordon has been elected.

Wollongong City | Mayor | Saturday, 3 September 2011

### Wards

For detailed distribution of preferences see the results section of the NSW Electoral Commission's website [www.elections.nsw.gov.au](http://www.elections.nsw.gov.au)