

# **Greater Hume Council - East Ward local government by-election**

24 November 2018

Report on the conduct of the election



# Contents

Election timetable.....	3
Foreword.....	4
Overview.....	5
By-election summary.....	6
Greater Hume Council - East Ward.....	7
Conduct of the election .....	8
Services to candidates and political parties.....	17
Electoral staffing .....	18
Election costs.....	19
Appendices .....	20

© State of New South Wales through the New South Wales Electoral Commission, 2019. All rights reserved.

## Election timetable

Activity	Date
<b>Registration for candidates, third-party campaigners and official agents opened</b>	Monday, 27 August 2018
<b>Local government expenditure period commenced</b>	Tuesday, 9 October 2018
<b>Close of rolls*</b>	Monday, 15 October 2018, 6pm
<b>Close of nominations</b>	Wednesday, 24 October 2018, 12noon
<b>Ballot paper draw</b>	Wednesday, 24 October 2018, 2pm
<b>Registration of electoral material commenced</b>	Wednesday, 24 October 2018
<b>Close of registration of candidates</b>	Wednesday, 24 October 2018
<b>Pre-poll voting commenced</b>	Monday, 12 November 2018
<b>Registration of electoral material closed</b>	Friday, 16 November 2018, 5pm
<b>Close of registration of third-party campaigners</b>	Friday, 16 November 2018
<b>Postal voting applications closed</b>	Monday, 19 November 2018, 5pm
<b>Declared Institution voting commenced</b>	Monday, 19 November 2018
<b>Pre-poll voting finished</b>	Friday, 23 November 2018, 6pm
<b>Declared Institution voting concluded</b>	Friday, 23 November 2018
<b>Election day</b>	Saturday, 24 November 2018
<b>Local government expenditure period ended</b>	Saturday, 24 November 2018
<b>Return of postal votes closed</b>	Monday, 26 November 2018, 6pm
<b>Distribution of preferences</b>	Tuesday, 27 November 2018
<b>Declaration of the poll</b>	3pm, Wednesday, 28 November 2018
<b>By-election report published</b>	Friday, 31 May 2019

\* For nominations and roll printing purposes.

## Foreword

I am pleased to present the NSW Electoral Commission's report on the conduct of the Greater Hume Council - East Ward local government by-election held on Saturday, 24 November 2018, to fill the vacancy created by the resignation of Councillor Kim Stewart.

Councillor Lea Parker (Independent) was declared elected on 3pm, Wednesday, 28 November 2018.

I am grateful to the staff, suppliers and contractors who contributed to the successful conduct of this by-election.

A handwritten signature in black ink that reads "John Schmidt". The signature is written in a cursive style with a long horizontal stroke at the beginning.

John Schmidt

Electoral Commissioner

## Overview

### By-election outcome

The candidate elected at the Greater Hume Council - East Ward by-election on Saturday, 24 November 2018 was Lea Parker (Independent) with 847 votes, 18.15 per cent of first preference votes.

### Candidates standing for election

Candidate name	Party affiliation
Amy LEHMANN	
Greg MASON	
Lea PARKER	Independent
Alam DASTANI	
Bruce QUICK	Independent

### Cost data

Cost of by-election	\$35,963
Cost per elector	\$14.19

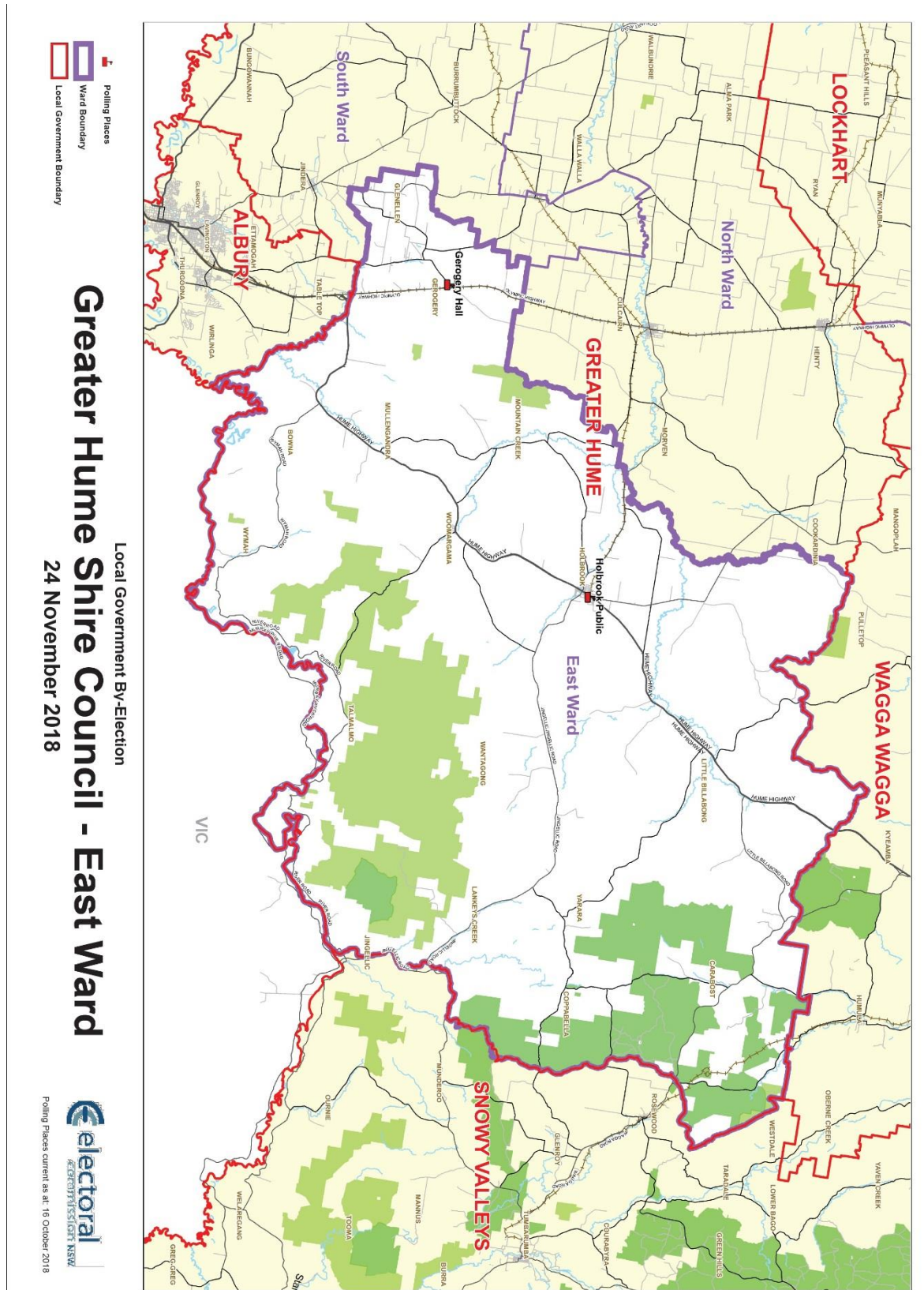
## By-election summary

<b>Enrolment</b>	
Total electors	2,535
<b>Voting venues</b>	
Pre-poll venues	1
Polling places	2
Declared institutions	1
<b>Voter turnout</b>	
Formal votes	2,000
Informal votes	70
Total votes	2,070
Voter turnout rate	81.66%
Formality rate	96.62%
Non-voting penalty notices issued	310 <sup>1</sup>
Penalty notices issued as % of roll	12.23%
<b>Voting options used by electors</b>	
Ordinary	1,316
Postal	105
Pre-poll	618
Declared Institution	10
Enrolment	20
Provisional/Silent	1
<b>Candidates</b>	
Total candidates	5

---

<sup>1</sup> A penalty notice is withdrawn if an elector provides a valid excuse for not voting. At the date of this report the enforcement process for failure-to-vote penalty notices for this by-election had not yet been completed.

# Greater Hume Council - East Ward



# Conduct of the election

## Background

Greater Hume Council is a council divided into three wards with nine councillors. There was one vacancy to be filled for this by-election following the resignation of Councillor Kim Stewart.

## Performance

The service standards in the Election Service Charter 2017 – 2020 were applied to the Greater Hume Council - East Ward by-election. In summary, the NSW Electoral Commission undertakes to:

- foster participation in the democratic process
- provide seamless service delivery
- be customer focussed and commercially minded
- be innovative and fast adaptors.

The Election Service Charter can be found at Appendix A.

## Comparison with 2016 local government elections

Comparative data on key indicators for the Greater Hume Council - East Ward Council in the 2018 by-election and the 2016 local government elections.

Voter participation		
	2016 election	2018 by-election
<b>Total electors</b>	2,524	2,535
<b>Formal votes</b>	1,869	2,000
<b>Informal votes</b>	58	70
<b>Total votes</b>	1,927	2,070
<b>Voter turnout</b>	76.35%	81.66%
<b>Informality</b>	3.01%	3.38%
<b>Election officials</b>	23 (All wards)	6
<b>Cost per elector</b>	\$7.87	\$14.19



## Communications

### Advertising

The 2018 local government by-election advertising campaign for Greater Hume Council - East Ward consisted of council-specific statutory advertisements and non-statutory advertising. Non-statutory advertising included information about registering as a third-party campaigner or candidate under the *Election Funding Act 2018* (EF Act).

### Election reminder service

People enrolled to vote in New South Wales can sign up to the NSW Electoral Commission's election reminder service. Subscribers to this service receive an email and/or SMS reminder of an upcoming State election and any local government elections relevant to their enrolled address.

For the Greater Hume Council - East Ward by-election, we trialled an expansion of the reminder service to all enrolled voters in the ward who had provided email and/or mobile details as part of their enrolment information (1,056 electors, more than 40 per cent of total electors), not just those people who had signed up for the reminder service (71 electors, approximately three per cent of total electors).

Election reminder service subscribers	Reach of reminder service		
	Welcome message	Early reminders sent	Final reminders sent
<b>Email</b>	753	752	680
<b>Mobile</b>	980	979	940
<b>Unique*</b> (*received email or SMS or both)	1,056	1,056	1,018
<b>As a percentage of electoral roll (2,535)</b>	41.66%	41.66%	40.16%

### Statutory campaign

Prior to the election the NSW Electoral Commission consulted with Greater Hume Council - East Ward to determine in which local newspapers the statutory advertisements, required under the legislation, were to be placed and the frequency of those placements.

Items covered in the statutory advertisements included:

- enrolment on residential and non-residential rolls
- nomination information
- candidates and polling place information

- election results.

Reproductions of these advertisements, and details of their placement in newspapers, can be viewed at Appendices B and C.

## **Social media**

The NSW Electoral Commission utilised social media to raise awareness of the election and promote voter participation.

There were two Facebook posts and four tweets published for the by-election covering the topics of:

- nominations and registrations
- the announcement of candidates
- pre-poll and postal voting details
- election campaign finance rules.

The Facebook posts and tweets reached a total of 6,868 users.

The top performing tweet and Facebook post are shown on the following page.



**NSW Electoral Commission** ✓  
@NSWElectoralCom

Remember to vote if you are enrolled in the Greater Hume Council East Ward. Pre-poll is open today until 6pm and polling booths are open tomorrow between 8am and 6pm. Further information, including the pre-poll and polling place locations, can be found at [bit.ly/2QI3eaN](https://bit.ly/2QI3eaN)

3:32 PM - 23 Nov 2018

1 Like



1



**NSW Electoral Commission**

Published by Axel Morton [?] · 23 November 2018 · 🌐

Remember to vote if you are enrolled in the [Greater Hume Council East Ward](#).

Pre-poll is open today until 6pm and polling booths are open tomorrow between 8am and 6pm.

Further information, including the pre-poll and polling place locations, can be found at <https://bit.ly/2QI3eaN>

## Direct communications with political participants

Candidates, third-party campaigners and official agents were communicated with via email and direct mail on the topics of:

- confirmation of candidate and third-party campaigner registrations
- advice to nominated candidates about the requirements to appoint an official agent
- confirmation of official agent registrations
- advice to official agents about the rules for managing the election campaign finances of candidates and third-party campaigners.

## Website

A NSW Electoral Commission website was specifically set up for the by-election for stakeholders to source information on:

- the election timetable
- election employment opportunities

- enrolment requirements and online enrolment confirmation
- methods for voting
- political parties
- nomination and registration of candidates, third-party campaigners and donors
- political donations
- list of nominated candidates
- polling place lookup facility
- election results.

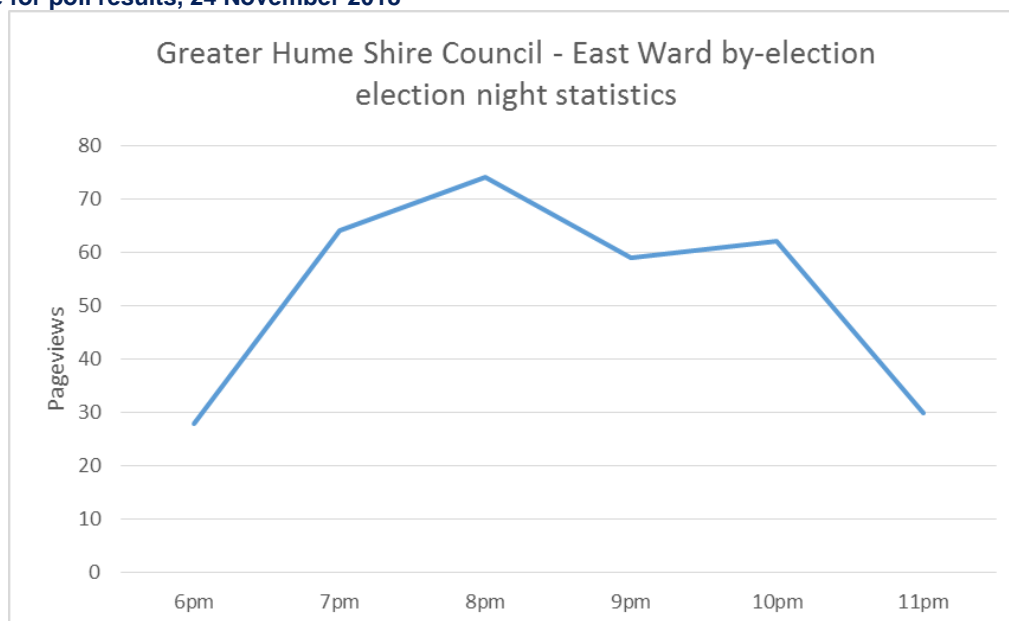
An enrolment search facility on the NSW Electoral Commission website was available to assist electors to verify their enrolment information.

Polling place information provided on the website included accessibility information for electors with a disability.

Greater Hume Council provided a link on its website to the NSW Electoral Commission site. The NSW Electoral Commission's website experienced 4,301 unique page views in the month leading up to the election.

Use of the NSW Electoral Commission's website is typically greatest on election night when users seek information on results. The following graph provides a picture of usage over the period from close of polling to midnight on election night for the by-election. A total of 739 page views were recorded on election day.

**Graph 1: Greater Hume Council – East Ward by-election – Usage of the NSW Electoral Commission website for poll results, 24 November 2018**



## Registrations

Registration of candidates closed on Wednesday, 24 October 2018. Registration of third-party campaigners closed on Friday, 16 November 2018.

Five candidates were registered under the EF Act for the by-election.

There were no third-party campaigners registered for the by-election. Following the declaration of the polls, we advised the elected candidate of their obligations under the EF Act as an elected member. The elected member was designated by the NSW Electoral Commission as their own official agent (as an elected member) and has an obligation to disclose on an annual basis (during their term as a councillor) any political donations made or received and electoral expenditure incurred.

## Nominations

Nominations closed at noon on Wednesday, 24 October 2018.

A total of five nominations were received by close of nominations.

The draw for ballot paper position, held at 2pm on 24 October 2018, was conducted by the Returning Officer at the Returning Officer's office.

For a nomination to be accepted by the Returning Officer, candidates were required to complete a nomination form and a Candidate Information Sheet. Candidates were also required to pay a nomination deposit of \$125 to the Returning Officer.

The nomination deposit is refunded to candidates if:

- a candidate is elected or receives at least four per cent of the total first preference votes
- in a group, any one of the group is elected or receives at least four per cent of the total first preference votes, or
- the election is uncontested.

## Rolls

### Residential roll

In New South Wales, enrolment and voting are compulsory at all federal, state and local government elections. The New South Wales electoral roll is managed by the NSW Electoral Commission in conjunction with the Australian Electoral Commission.

Legislation provides that for local government elections the electoral roll closes on the 40th day before the day of the election. Any person who was on the roll when it closed at 6pm on Monday, 15 October 2018 was required to vote. Rolls are closed to allow sufficient time to print and distribute the authorised rolls and for nomination purposes. Eligible citizens can enrol and vote on election day.

There were 2,535 electors on the residential electoral roll for Greater Hume Council - East Ward. This was an increase of 11 electors from the number on the roll for the local government elections in September 2016.

### Non-residential roll

The non-residential roll is comprised of non-residential electors and occupiers and rate-paying lessees. The non-residential roll lapses after each election. Inclusion on the non-residential roll of electors is available to electors who pay rates to the council on property they own but do not occupy, as well as people who occupy or lease property. Under the *Local Government Act 1993*, the council's General Manager is responsible for compiling and maintaining the non-residential roll of electors.

There were no electors on the non-residential roll for Greater Hume Council - East Ward for the 2018 by-election.

## Voting

### Method of voting

Section 285 *Local Government Act 1993* prescribes that the voting system in a contested election of a councillor or councillors is to be:

- optional preferential if the number of councillors to be elected is one; or
- proportional representation if the number of councillors to be elected is two or more.

For this by-election, optional preferential was the method used. A reproduction of the ballot paper is shown at Appendix D.

### Absent voting

Unlike state and federal elections, absent voting is not available at NSW local government elections for electors who are outside their council area or ward on election day.

### Early voting

#### Pre-poll voting

Pre-poll voting opened at 8am on Monday, 12 November 2018 and closed on Friday, 23 November 2018. The pre-poll location was at Greater Hume RO Office, 39 Young Street, Holbrook NSW 2644.

#### Postal voting

Electors who are registered as a Registered General Postal Voter for NSW State elections are not required to register again for local government elections and were therefore automatically sent postal vote ballot papers.

Applications for postal voters opened on nomination day with electors able to obtain applications from the NSW Electoral Commission website, the NSW Electoral Commission head office or the Returning Officer's office. Applications for postal voting closed on Monday, 19 November 2018.

In order to be admitted to the count postal votes needed to be received by the Returning Officer by 6pm on Monday, 26 November 2018. Of 171 postal votes issued, 105 were accepted, 37 were rejected and 29 were not scrutinised because they were either returned too late or not returned at all.

### Declared institutions

The Electoral Commissioner has the authority to appoint hospitals, nursing homes, retirement villages and like facilities as declared institutions, to assist the residents and/or patients of these facilities who are unable to attend a polling place on election day.

Election officials visited the following declared institution from the Monday until Wednesday before election day:

- Holbrook Village Hostel – 47-55 Bowler Street, Holbrook NSW 2644

## **Election day voting**

### **Polling places**

Securing appropriate premises for polling places can be difficult. The NSW Electoral Commission does not own facilities within council areas. The pool of available rental premises is limited by the short-term nature of the lease and the NSW Electoral Commission's space, accessibility, location and workplace health and safety requirements.

The NSW Electoral Commission provided council with a draft list of proposed polling places to be used at this election. Feedback from the council was taken into consideration prior to the final selection of polling places.

As far as practically possible, the NSW Electoral Commission aimed to provide accessible and appropriately sited polling places for the by-election. Information was provided to assist electors with mobility issues or other disabilities to locate the most suitable polling place. This access information was provided on the NSW Electoral Commission's website and by NSW Electoral Commission staff.

There were two polling places for the Greater Hume Council - East Ward area on election day:

- Gerogery Hall – Main Street, Gerogery NSW 2642
- Holbrook Public School – Swift Street, Holbrook NSW 2644

Both venues were accessible with assistance and open to electors from 8am to 6pm on election day.

## **Counting the votes**

On election night all polling places conducted an initial sort and count of first preference votes. At the Returning Officer's office, declaration (ie, postal, pre-poll and declared institution) votes are opened, sorted and first preferences are counted. The count results were updated on the NSW Electoral Commission website on election night from 6pm onwards.

The successful candidate was declared elected by the Returning Officer at 3pm on Wednesday, 28 November 2018, following the statutory 24-hour period required for any recount requests.

Once the declaration of the election result had been signed by the Returning Officer, copies of the declaration were provided to the Electoral Commissioner, the Council's General



Manager and the Chief Executives of both the Office of Local Government and Local Government NSW. In addition, the Returning Officer advised all candidates by phone, email or SMS that the election results were available on the NSW Electoral Commission website. Election results were also published in local newspapers.

## Non-voters

### Failure to vote

Under electoral legislation, the NSW Electoral Commission is required to issue 'failure to vote' notices to those electors whose names were not marked off the electoral roll as having voted or as having provided a valid reason.

All electoral rolls marked at polling places and in the Returning Officer's office were scanned after election day to create a list of non-voters. The penalty for failing to vote without a valid reason at a local government election is \$55.00.

For this election, 310 penalty notices were issued within the three-month period after election day.<sup>2</sup>

## Services to candidates and political parties

### Candidate information

A candidate information presentation was available on the NSW Electoral Commission website to assist prospective candidates in their preparation for the election.

The presentation provided prospective candidates with the opportunity to familiarise themselves with the candidate process. Major topics covered in the presentation include:

- the election timetable
- candidate eligibility criteria and how to nominate
- campaigning (election advertising, 'how-to-vote' material and public scrutiny of candidates)
- complaints handling by NSW Electoral Commission
- voting and counting ballot papers
- scrutineers
- election funding obligations.

---

<sup>2</sup> A penalty notice is withdrawn if an elector provides a valid excuse for not voting. At the date of this report the enforcement process for failure-to-vote penalty notices for this by-election had not yet been completed.

The NSW Electoral Commission *Handbook for Parties, Groups, Candidates and Scrutineers*, which outlines relevant electoral processes and procedures for local government elections, was also made available to stakeholders.

Information about election processes and election campaign finance rules was also provided to candidates, political parties and others who made telephone or email enquiries.

A fact sheet for local government by-elections was published on the website to support candidates and other political participants understand the requirements for managing political donations and electoral expenditure.

## **How-to-vote material**

All electoral material to be distributed by candidates or their representatives on election day must be registered with the NSW Electoral Commission. Registration does not apply to posters, whether they are displayed before or on election day, nor is it required for material to be distributed before election day.

Candidates are required to provide an application form and a copy of each item to be registered. The NSW Electoral Commission provided candidates with guidelines to assist them to meet the registration requirements. A candidate help line was also set up by the NSW Electoral Commission to aid candidates.

## **Electoral staffing**

### **Returning Officer**

The Returning Officer had a number of responsibilities central to the running of the election, including:

- set up and decommissioning of a temporary office
- training of office staff and polling place managers
- making arrangements for voting at polling places and declared institutions
- issuing and processing postal and pre-poll votes
- dealing with enquiries and complaints from candidates and the public
- processing candidate nominations
- counting of votes and declaring the result of the election.

The Returning Officer's office for the Greater Hume Council - East Ward by-election was located at Greater Hume RO Office - 39 Young Street, Holbrook NSW 2644.

### **Returning Officer Support Officer**

A Returning Officer Support Officer was appointed in order to provide support to the Returning Officer on electoral matters and procedures in the conduct of the election.

## Election day staffing

Staffing is a significant cost for elections and, as such, the NSW Electoral Commission recognises the importance of accurately predicting the number of required staff while taking into consideration the associated costs without compromising the level of service to electors.

The level of staffing required for the by-election varied during the different phases of the election. Staff were employed to undertake a variety of tasks including:

- office set up
- packing materials for each polling place
- registration, distribution and receipt of postal votes
- operation of pre-poll voting
- visits to declared institutions
- counting of the votes
- office pack-up.

All polling places have a minimum of two staff, one of whom is the polling place manager.

## Election costs

Councils are required to meet the costs of conducting their elections. While the NSW Government does not provide direct funding for local government elections, some NSW Electoral Commission services required for local government elections, such as enrolment and non-voting services, are provided by the NSW Electoral Commission at no cost. It should also be noted that services provided to candidates, political parties and others regarding the requirements of the EF Act are provided by the NSW Electoral Commission at no cost.

Key cost drivers for the election included:

- election officials wages
- office accommodation for the Returning Officer
- information and technology support
- polling places
- number of electors in council area
- newspaper and elector brochure advertising
- printing/materials for polling places.

The final cost of NSW Electoral Commission conducting the election was \$35,963 (GST exclusive).

This was made up of election staffing \$17,596; venues \$515; logistics \$2,604; ballot papers and electoral rolls \$384; other miscellaneous items \$13,091 and election management fee \$1,773. The cost per elector was \$14.19.


## Appendices

Appendix A: Election Service Charter 2017 – 2020 .....	21
Appendix B: Greater Hume Council - East Ward by-election – polling places and candidates advertisement .....	22
Appendix C: Greater Hume Council - East Ward by-election – declaration of poll advertisement .....	23
Appendix D: Greater Hume Council - East Ward by-election – ballot paper .....	24

## Appendix A: Election Service Charter 2017 - 2020

GOALS	TO BE ACHIEVED BY:	SUCCESS MEASURED BY:
<b>Foster participation in the democratic process</b>	<ul style="list-style-type: none"> <li>• Conducting impartial and fair elections in accordance with the law</li> <li>• Providing services and information to enable all election participants to participate fully including communities with historically lower participation rates</li> <li>• Communicating election information in ways that encourage awareness and engagement</li> <li>• Supporting events and activities that encourage participation in democracy</li> </ul>	<ul style="list-style-type: none"> <li>• Election participants report conduct of election as impartial and fair and without barriers to participation</li> <li>• Election participation equals or exceeds prior election levels</li> <li>• Formality rates equal or exceed prior election levels</li> <li>• There are no Court challenges to declared results</li> </ul>
<b>Provide seamless service delivery</b>	<ul style="list-style-type: none"> <li>• Providing comprehensive services including:               <ul style="list-style-type: none"> <li>– information services</li> <li>– enrolment services</li> <li>– voting options including pre-poll and technology enabled voting</li> <li>– location and accessibility of polling places</li> <li>– services to assist those with particular needs</li> <li>– responsibilities and entitlements of candidates, groups and political parties including funding and disclosure requirements</li> </ul> </li> <li>• Providing efficient services to meet needs of participants according to legislative mandate</li> <li>• Providing election services in timely, efficient and professional manner</li> </ul>	<ul style="list-style-type: none"> <li>• Stakeholders feel well informed about election events</li> <li>• Election participants report satisfaction with the NSWEC's electoral services</li> </ul>
<b>Be customer focussed and commercially minded</b>	<ul style="list-style-type: none"> <li>• Understanding the needs of our stakeholders and users of our election services through liaison, consultation and structured feedback</li> <li>• Delivering well organised, reliable and quality elections</li> <li>• Ensuring elections are provided on a competitive basis</li> </ul>	<ul style="list-style-type: none"> <li>• Participants report satisfaction with NSWEC's services and election staff</li> <li>• Those entities using the NSWEC to conduct elections report satisfaction with services provided and see these are representing value</li> <li>• Costs of providing elections are recovered</li> <li>• The NSWEC actively seeks feedback on its services</li> </ul>
<b>Be innovative and fast adaptors</b>	<ul style="list-style-type: none"> <li>• Utilising new technologies to increase convenience for those participating in elections within the legislative mandate while maintaining integrity of the election and security of information</li> <li>• Review developments in election services and funding and disclosure across Australia and internationally for possible application to NSW</li> </ul>	<ul style="list-style-type: none"> <li>• The NSWEC is seen as seeking to adapt its services, within legislative requirements, to meet participants' needs</li> <li>• The NSWEC advises Government of innovations that will strengthen the democratic system and improve administration of elections</li> </ul>

## Appendix B: Greater Hume Council - East Ward by-election – polling places and candidates advertisement



### GREATER HUME SHIRE EAST WARD BY-ELECTION SATURDAY, 24 NOVEMBER 2018

A by-election will be held in the Greater Hume Shire - East Ward local government area on Saturday, 24 November 2018 to elect a councillor.

If you are enrolled in the Greater Hume Shire - East Ward local government area, you must vote. To check your enrolment details, visit [www.elections.nsw.gov.au](http://www.elections.nsw.gov.au) or call 1300 135 736.

#### Voting on election day

Voting will take place on Saturday, 24 November 2018 between the hours of 8am and 6pm.

#### Polling Places

Locality	Venue Name:	Address
Gerogery	Gerogery Commemoration Hall	Main Street, Gerogery
Holbrook	Holbrook Public School	Swift Street, Holbrook

For accessibility information visit [www.elections.nsw.gov.au](http://www.elections.nsw.gov.au) or call 1300 135 736

#### Voting before election day

You may be entitled to a postal or pre-poll vote. For details, visit [www.elections.nsw.gov.au](http://www.elections.nsw.gov.au) or call 1300 135 736.

#### Pre-poll voting

You can vote early in person from Monday, 12 November 2018 at the Returning Officer's office at 39 Young Street, Holbrook NSW 2644.

Pre-poll voting hours:

- Monday, 12 November - Thursday, 22 November: 8:30am-5:00pm
- Friday, 23 November: 8:30am-6:00pm
- Closed Saturday and Sunday

#### Voting by post

You can apply online for a postal vote from [www.elections.nsw.gov.au](http://www.elections.nsw.gov.au) or by calling 1300 135 736. Your application must be completed and received by the NSW Electoral Commission no later than 5pm Monday, 19 November 2018.

Postal vote applications can be sent via post or email:  
 By post: **GPO Box 832, Sydney NSW 2001**  
 By email: **PVA@elections.nsw.gov.au**

#### Candidates

Name of Candidate	Party Affiliation
LEHMANN Amy	-
MASON Greg	-
PARKER Lea	Independent
DASTANI Alam	-
QUICK Bruce	Independent

#### Candidate Information Sheets

Each candidate's information sheet is available for viewing at [www.elections.nsw.gov.au](http://www.elections.nsw.gov.au) or at the Returning Officer's office or at polling places.

#### Voting is compulsory

Voting is compulsory for all electors of the Greater Hume Shire - East Ward local government area. The penalty for not voting is \$55.

**Information: [www.elections.nsw.gov.au](http://www.elections.nsw.gov.au) or call 1300 135 736**

For enquiries in languages other than English, call our interpreting service 13 14 50  
 For hearing and speech impaired enquiries, call us via the National Relay Service on 13 36 77

**Karen Mills, Returning Officer.**

Authorised by John Schmidt, Electoral Commissioner, Level 25, 201 Kent Street Sydney, NSW, 2000.

Advertising schedule

The Border Mail

Wagga Wagga Daily Advertiser

Eastern Riverina Chronicle

Wednesday, 31 October 2018

Wednesday, 31 October 2018

Wednesday, 31 October 2018

## Appendix C: Greater Hume Council - East Ward by-election – declaration of poll advertisement



**GREATER HUME SHIRE - EAST WARD  
BY-ELECTION  
SATURDAY, 24 NOVEMBER 2018**

**Result of Election**

An election was held to elect one councillor. I declare **Lea PARKER** elected as councillor until the next ordinary election of the Council.

Detailed results are available from the NSW Electoral Commission website.

**Karen Mills**, Returning Officer  
28 November 2018

**Information: [elections.nsw.gov.au](http://elections.nsw.gov.au) or 1300 135 736**

For enquiries in languages other than English call our interpreting service 13 14 50.  
For hearing and speech impaired enquiries, call us via the National Relay Service on 13 36 77.

BLZ156504

Advertising schedule  
The Border Mail

Thursday, 6 December 2018



## Appendix D: Greater Hume Council - East Ward by-election – ballot paper

Local government election

East Ward

**Greater Hume Shire**

BALLOT PAPER FOR  
**ELECTION OF 1 COUNCILLOR**  
Held on Saturday 24 November 2018

**DIRECTIONS FOR VOTING**  
**PLEASE READ CAREFULLY**

Place the number **1** in the square next to the candidate of your choice. If you wish to vote for any more candidates, place consecutive numbers starting with **2** in the squares next to those candidates in order of your preferences for them.

LEHMANN Amy


MASON Greg

PARKER Lea  
Independent

DASTANI Alam

QUICK Bruce  
Independent

**You must not take a ballot paper out of the polling place**

electoral  
commission NSW