

# Contents

<b>1</b>	<b>Introduction</b>	<b>3</b>
<b>2</b>	<b>Names of districts</b>	<b>4</b>
2.1	Davidson to St Ives and Ku-ring-gai to Wahroonga . . . . .	4
2.2	Mulgoa to Badgerys Creek . . . . .	4
2.3	Londonderry to St Marys . . . . .	4
<b>3</b>	<b>Sutherland</b>	<b>5</b>
3.1	S145 (Van Ardenne) . . . . .	5
3.2	S148 (Gordon) . . . . .	5
3.3	S203 (Liberal) . . . . .	5
<b>4</b>	<b>Macarthur and Liverpool</b>	<b>6</b>
4.1	S147 (Sartor) . . . . .	6
4.2	S148 (Gordon) . . . . .	6
4.3	S201 (Labor) . . . . .	6
4.4	S203 (Liberal) . . . . .	7
<b>5</b>	<b>Central Sydney</b>	<b>13</b>
5.1	S133 (Smith) . . . . .	13
5.2	S142 (Markou) . . . . .	18
5.3	S148 (Gordon) . . . . .	18
5.4	S201 (Labor) . . . . .	18
5.5	S202 (Greenwich) . . . . .	19
5.6	S203 (Liberal) . . . . .	21

<b>6 Penrith</b>	<b>24</b>
6.1 S203 (Liberal) . . . . .	24
6.2 S148 (Gordon) . . . . .	25
<b>7 Parramatta</b>	<b>26</b>
7.1 S201 (Labor) . . . . .	26
7.2 S203 (Liberal) . . . . .	26
<b>8 Hornsby and Ku-ring-gai</b>	<b>29</b>
8.1 S134 (Mak) . . . . .	29
8.2 S138 (Williams) . . . . .	32
8.3 S177 (Abbott) . . . . .	32

# 1 Introduction

My comment applies to most submissions concerning the names and boundaries of districts within Greater Sydney. In Section 2 I will address remarks in submissions pertaining to names of districts. In the remaining sections, I will discuss suggested changes to boundaries. There are a few submissions for which I will present how an objection could be accommodated, or provide an alternative to an objection. Specifically, these submissions are:

- **S133** (Smith), in relation to Oatley (see Section 5.1),
- **S202** (Greenwich), in relation to Sydney (see Section 5.5),
- **S203** (Liberal), in relation to districts in the Macarthur and Liverpool region (see Section 4.4),
- **S203** (Liberal), in relation to East Hills (see Section 5.6).

I have attached geospatial files containing maps of districts in my submission and comments so that the Panel and others can inspect my maps in further detail. I want to make it clear that some of the changes illustrated in these maps I neither support nor oppose, as they constitute a suggestion for how the Panel *could* accommodate for the objections listed above should they decide to do so.

As I needed to produce many maps for this contribution anyway, I also took the time to create maps depicting the minor changes to Castle Hill, Coogee, Hawkesbury, Heffron and Kellyville suggested in my submission. These can be found in the geospatial files.

## 2 Names of districts

### 2.1 Davidson to St Ives and Ku-ring-gai to Wahroonga

I agree with **S203** (Liberal) that the existing names should be retained.

### 2.2 Mulgoa to Badgerys Creek

Suggestion **S163** (Merton) expresses strong objection to this name change, as do **S148** (Gordon) and **S203** (Liberal).

I almost considered mentioning Badgerys Creek as one of the districts (along with St Ives, Wahroonga, and Winston Hills) that the Panel has proposed to unnecessarily rename. Admittedly, I was sold by this argument in the Panel's report:

The Redistribution Panel considers that the name Badgerys Creek better reflects the population centre in the district, and in future will be associated by electors with the new Sydney Airport.

Mulgoa SSC is still united within the district, and it is more central to it than it is on the existing boundaries. Therefore, it is ultimately an unnecessary name change. If locals are not going to be pleased by this name change, the Panel should probably retain the name **Mulgoa**.

**S203** (Liberal) also makes the point that **Mulgoa** is an indigenous Australian name.

### 2.3 Londonderry to St Marys

In my submission, I noted:

[T]he Panel has opted to avoid renaming numerous districts that could be renamed to a more recognisable or central place name.

Londonderry is the most prominent example of this. **S148** (Gordon) and **S203** (Liberal) suggest renaming Londonderry to **St Marys**. While not absolutely necessary, I agree that this is an acceptable name change.

## 3 Sutherland

### 3.1 S145 (Van Ardenne)

I sympathise with the remarks in this submission, and of course it is not at all ideal for there to be a Sutherland-Wollongong hybrid district. However, it is not possible to avoid this without significant changes to districts in the southeast of the state or causing significant malapportionment.

As suggested by in **S203** (Liberal), the Panel could keep Bulli part of Keira and extend Heathcote only as far south as Thirroul. This is pushing the numbers a little as the six districts in the Illawarra and South Coast districts will collectively have approximately 6.09 quotas on projected enrolment. However, the Panel may well decide that this is justified.

### 3.2 S148 (Gordon)

Leaving the Heathcote-Keira boundary unchanged leaves the Illawarra and South Coast districts far too much (almost 20%) above quota on projected enrolment. Heathcote needs to at least extend into Thirroul. As has been highlighted by myself and others, the existing boundaries in the Sutherland Shire have significant problems, thus changes are warranted.

However, I agree that keeping Bulli part of Keira and having Holsworthy retain further electors in its western end may be justified.

### 3.3 S203 (Liberal)

I actually quite liked the Liberal Party's suggestion in relation to the Sutherland Shire until I noticed that their Cronulla district is approximately 6.4% below quota, Heathcote 5.3%, and Miranda 4.0%!

## 4 Macarthur and Liverpool

### 4.1 S147 (Sartor)

It is painful that the Panel cannot adopt the suggestions in this submission because of the current enrolment rule. It would make enormous sense for the Campbelltown LGA suburbs along Raby Road to be made part of Macquarie Fields, and for Edmondson Park and Bardia to be transferred to Leppington. And if it were not for the current enrolment rule, this would be possible.

This submission highlights the point I have been making throughout my contributions – that the community of interest arising from new residential areas is one of the strongest communities of interest that can be found in metropolitan areas. The current enrolment rule is a direct threat to their effective representation.

Obviously, there is nothing that can be done about this in this redistribution. But I will reiterate this point – The idea put forward by some that the Panel should be dividing these communities of interest to make it easier to satisfy numerical requirements is reckless and dangerous. I am grateful that the Panel has done their best to keep these communities united within the constraints that have been imposed upon them.

### 4.2 S148 (Gordon)

Gordon seems to be making a similar suggestion to that of Sartor. Exchanging Bardia and Edmondson Park for the Campbelltown LGA suburbs along Raby Road would be a significant improvement on the proposed boundaries, were it possible. It saddens me that the Panel cannot adopt these changes due to the current enrolment rule.

### 4.3 S201 (Labor)

Having Lurnea as part of Holsworthy district is far from ideal. But exchanging it for Liverpool and Warwick Farm worsens the situation. At least Lurnea is mostly low-density. At least the Panel's boundaries avoids splitting the core Liverpool area. And at least the Panel's proposed boundaries are relatively simple. The Labor Party's attempt at conjuring up a justification demonstrates that these changes *cannot* be justified.

The Moorebank Industrial Precinct [...] are the major manufacturing and Industry Centres and draw the majority of employees from adjoining suburbs which include Liverpool and Warwick Farm.

This industrial precinct is located between the residential part of Moorebank and the Georges River. The parts of the suburbs to the west of the Georges River closest to this precinct are located in Holsworthy under the Panel's proposal.

Warwick Farm adjoins the suburb of Chipping Norton and both are connected via Governor Macquarie Drive.

And Lurnea is connected via the Light Horse Bridge and the M5.

The inclusion of Warwick Farm in Holsworthy also consolidates the Georges River lakes [...] in the same district.

This really just shows how difficult it is to justify the existence of a strong community of interest between Warwick Farm and Chipping Norton.

[T]he boundaries under the ALP objection [...] will be very clearly understood by residents.

Under the Panel's proposal, determining which district an elector resides in is as easy as asking "Are you south of Hoxton Park Road?". How is the zig-zag boundary in the Labor Party's alternative easier to understand than this?

#### **4.4 S203 (Liberal)**

I actually think that there is a great deal of merit to the Liberal Party's suggestion in relation to Holsworthy, Leppington, Liverpool, and Macquarie Fields districts.

By transferring Lurnea to Liverpool, and placing Casula and Glenfield in Holsworthy, Holsworthy is no longer a district that spans the entire socioeconomic spectrum. It also makes sense for Cecil Hills and Elizabeth Hills to be transferred to Leppington, and for the suburbs along Raby Road to be placed in Macquarie Fields. On balance, there are two significant downsides to this alternative:

- Holsworthy becomes a trans-Campbelltown-Liverpool-Sutherland district,
- Bardia and Edmondson Park are left even worse off in Macquarie Fields with Glenfield and Casula transferred out.

This may be an alternative worth considering. If the Panel is to pursue this, there are few changes I would make to the Liberal Party's suggestion:

- The Liberal Party's changes to the Sutherland Shire districts should not be pursued due to the enrolment inequalities it creates. The eastern boundary of Holsworthy can remain as proposed by the Panel. Holsworthy should then retain parts of Prestons bounded by the M5, M7, and Kurrajong Road to bring the district closer to a quota.
- Claymore should remain part of Campbelltown district as its removal leaves the district well below quota.
- Varroville and parts of Denham Court connected only via suburbs along Campbelltown Road should remain in Macquarie Fields district. The boundary of the South West Growth Area can be used here.
- Due to the current enrolment rule, there is very little wriggle room with respect to the boundary of Leppington district. As far as I can find, the best that the Panel can do is to unite all of Hinchinbrook in Leppington, and all of Bonnyrigg Heights and Green Valley in Liverpool.

These changes are depicted in Figures 1 (Holsworthy), 2 (Liverpool), 3 (Leppington), and 4 (Macquarie Fields).



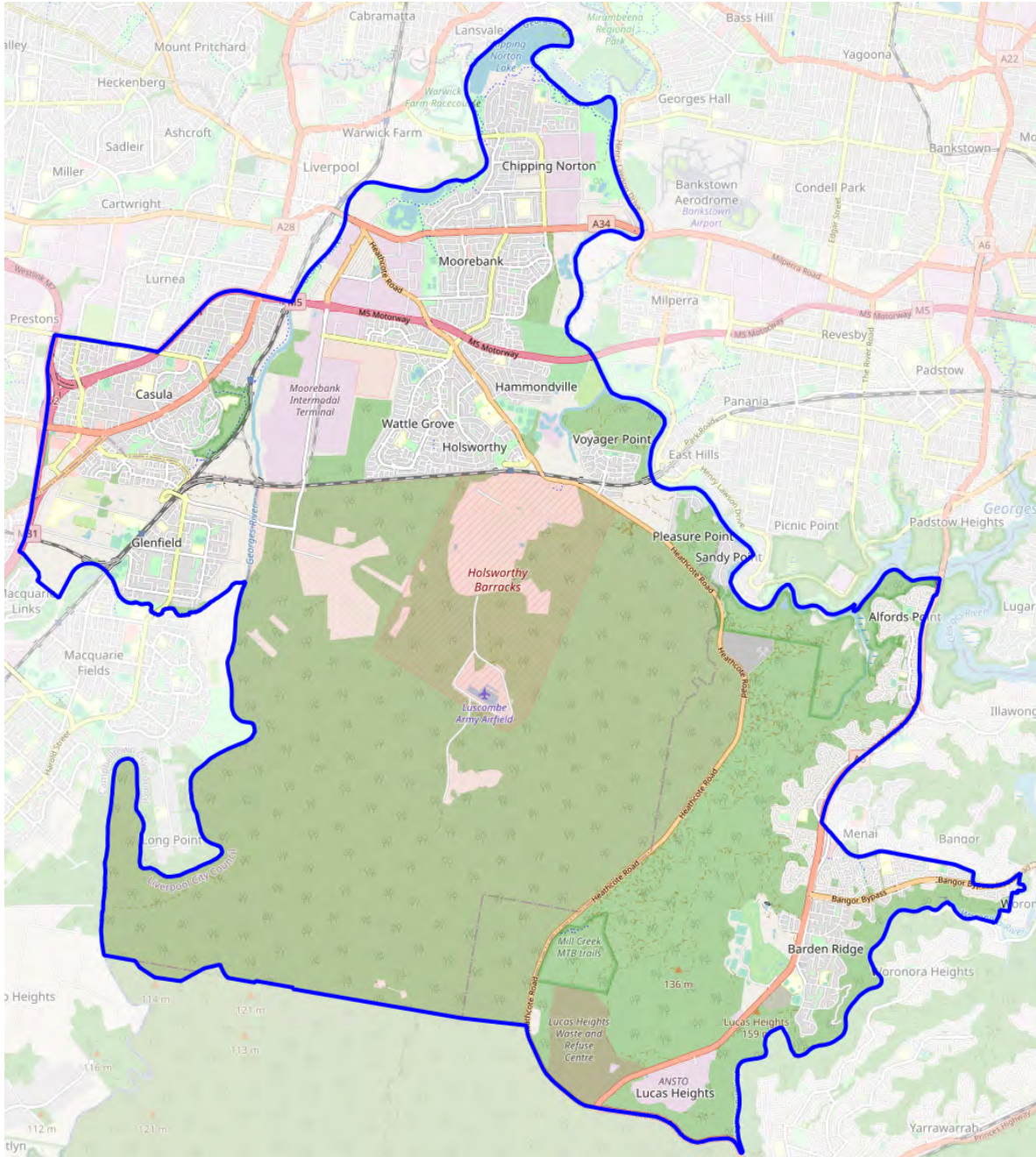


Figure 1: Possible alternative Holsworthy

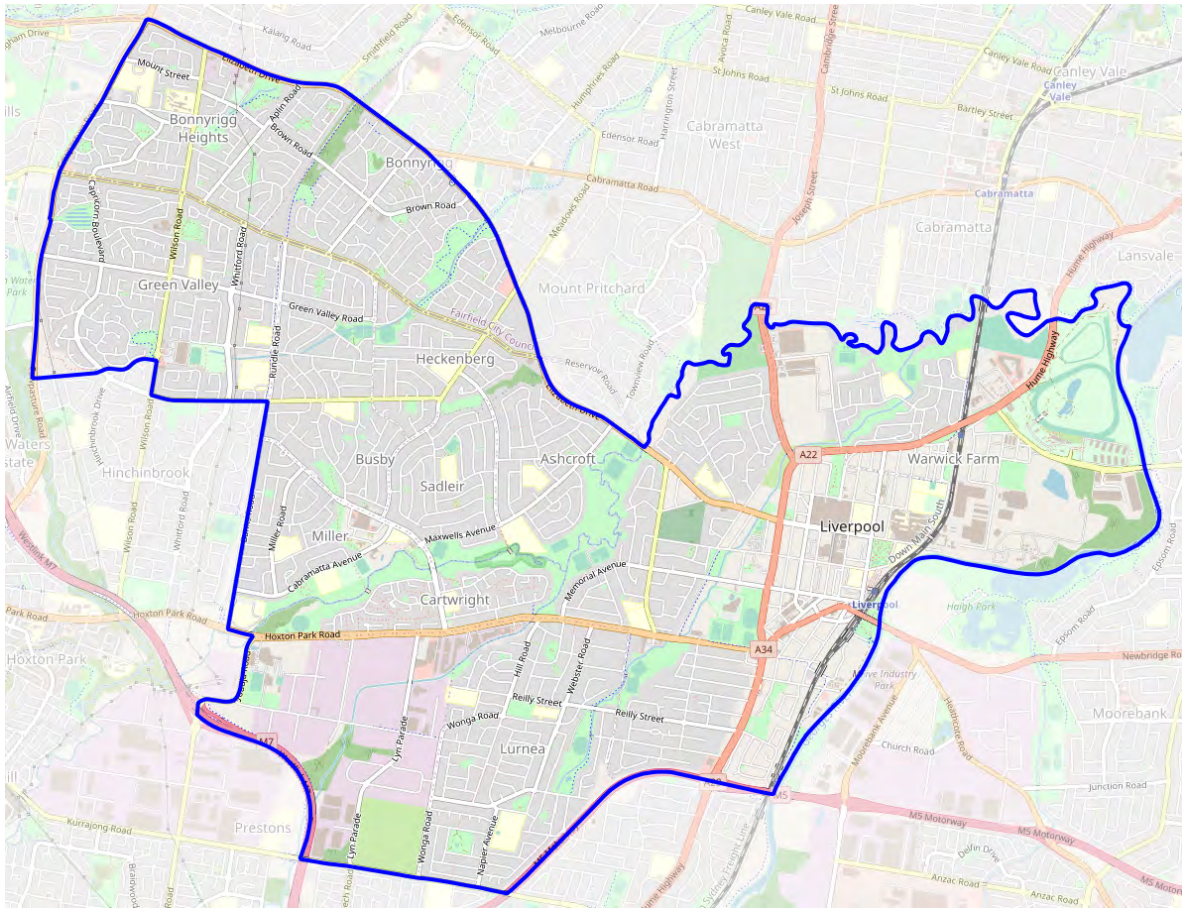


Figure 2: Possible alternative Liverpool

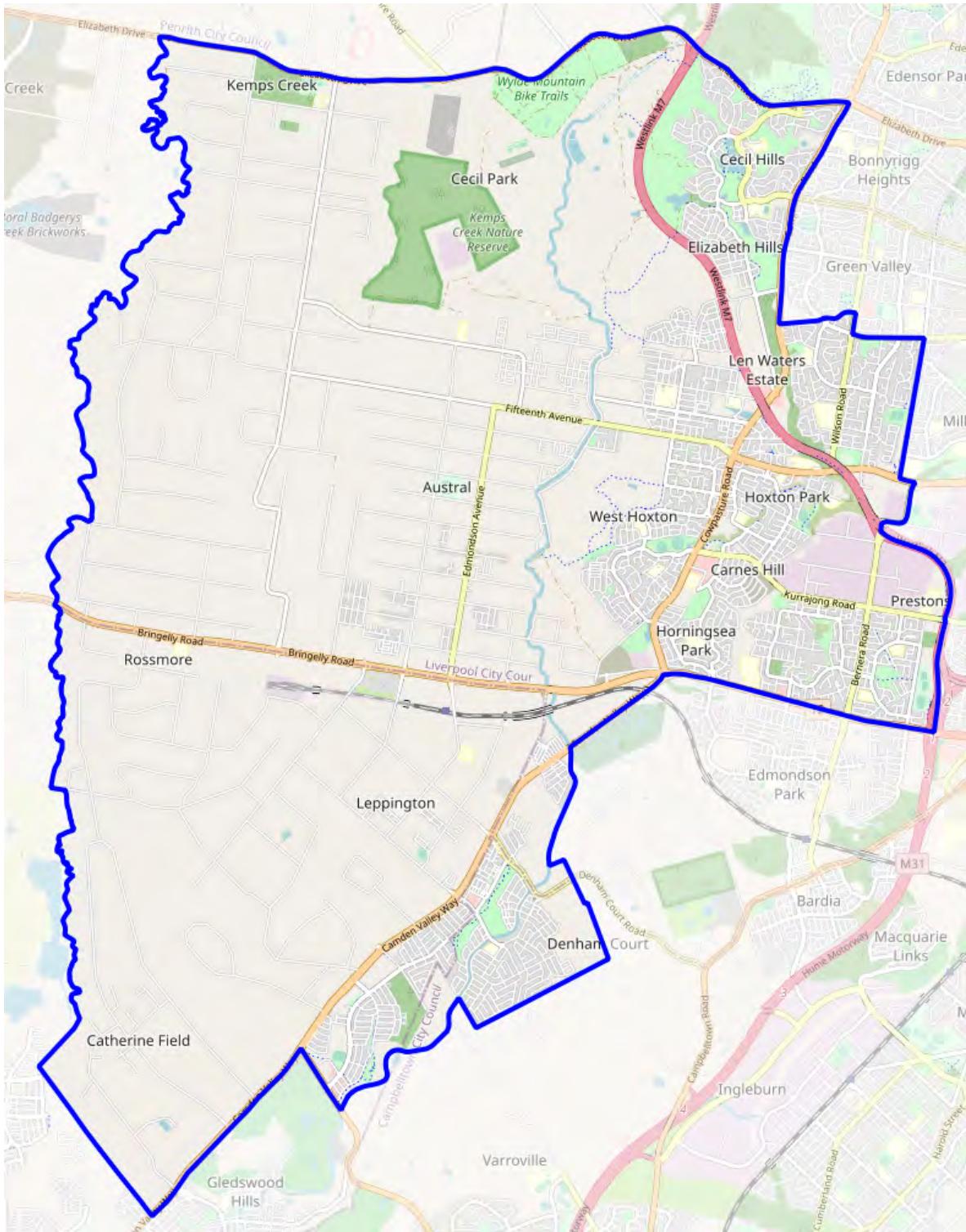


Figure 3: Possible alternative Leppington

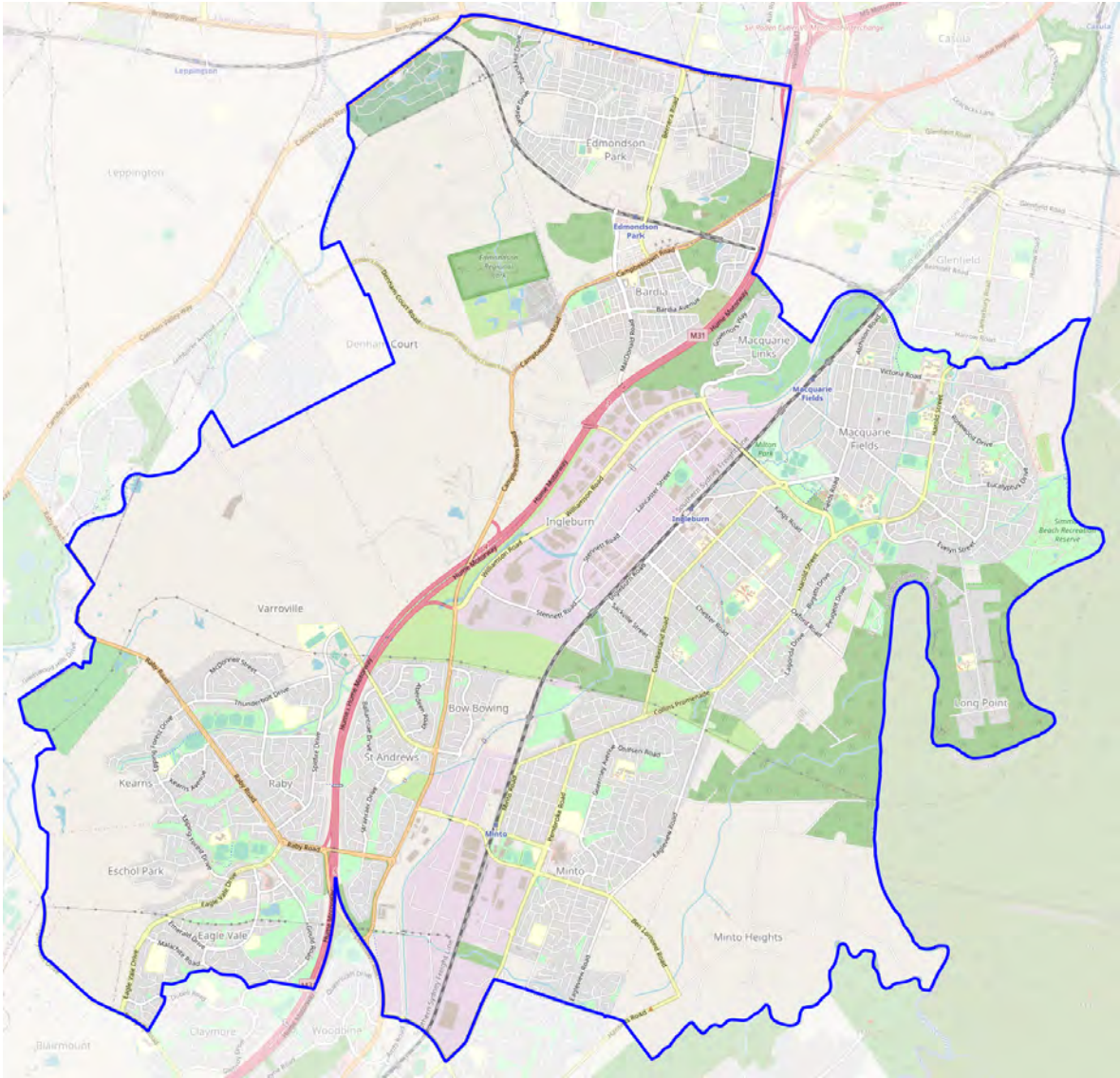


Figure 4: Possible alternative Macquarie Fields

## 5 Central Sydney

### 5.1 S133 (Smith)

I do not have a particularly high degree of familiarity with this area, and nothing jumps out to me as significantly better or worse than the proposed boundaries, so I have no opinion as to whether the Panel should adopt these changes. However, I have taken the time to investigate how these changes could be achieved with minimal flow-on effect to the proposed boundaries, which I will share here.

Relative to the proposed boundaries, these changes will necessitate a clockwise rotation of electors in Oatley, Bankstown (Lakemba), Canterbury, and Kogarah.

- Oatley will need to lose further electors to Kogarah in its southeast corner. A clear boundary that can be adopted is Hillcrest Avenue (west from King Georges Road), onto the Oatley SSC boundary (through Moore Reserve).
- I have tried to find ways to avoid splitting Lakemba SSC. Unfortunately, I do not think this is feasible. The proposed Bankstown district will need to push further east, but cannot fit all of Lakemba SSC. I think that the best that can be done is for all of Lakemba SSC except areas south of the railway line and east of Sproule Street to be made part of Bankstown.
- Canterbury must then extend south into Kogarah. There are a few ways of achieving this, though none are entirely ideal. The best that I can find is for almost all of Kingsgrove to be united in Canterbury (using Stoney Creek Road as the boundary), and for Bexley North to remain united in Kogarah. This prevents the small suburb of Bexley North from becoming split across three different districts.

These changes are depicted in Figures 5 (Oatley), 6 (Bankstown), 7 (Canterbury), 8 (Kogarah). Note that Figure 6 also reflects the realignment of the boundary between Bankstown and East Hills suggested in **S203** (see Section 5.6).

Again I emphasise the fact that I neither support nor oppose this change to Oatley – this is just a suggestion for a simple way the Panel could realise them.

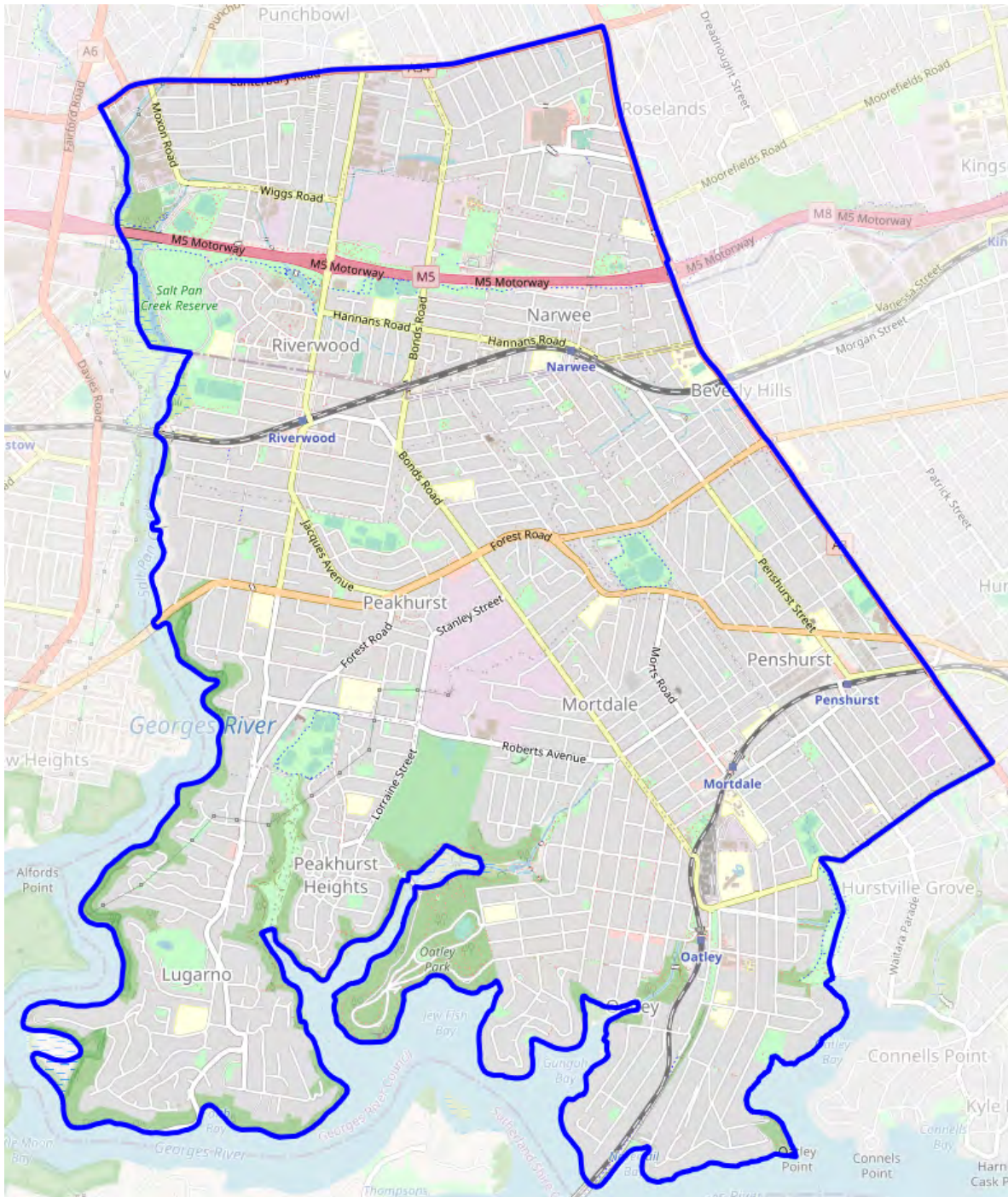


Figure 5: Possible alternative Oatley

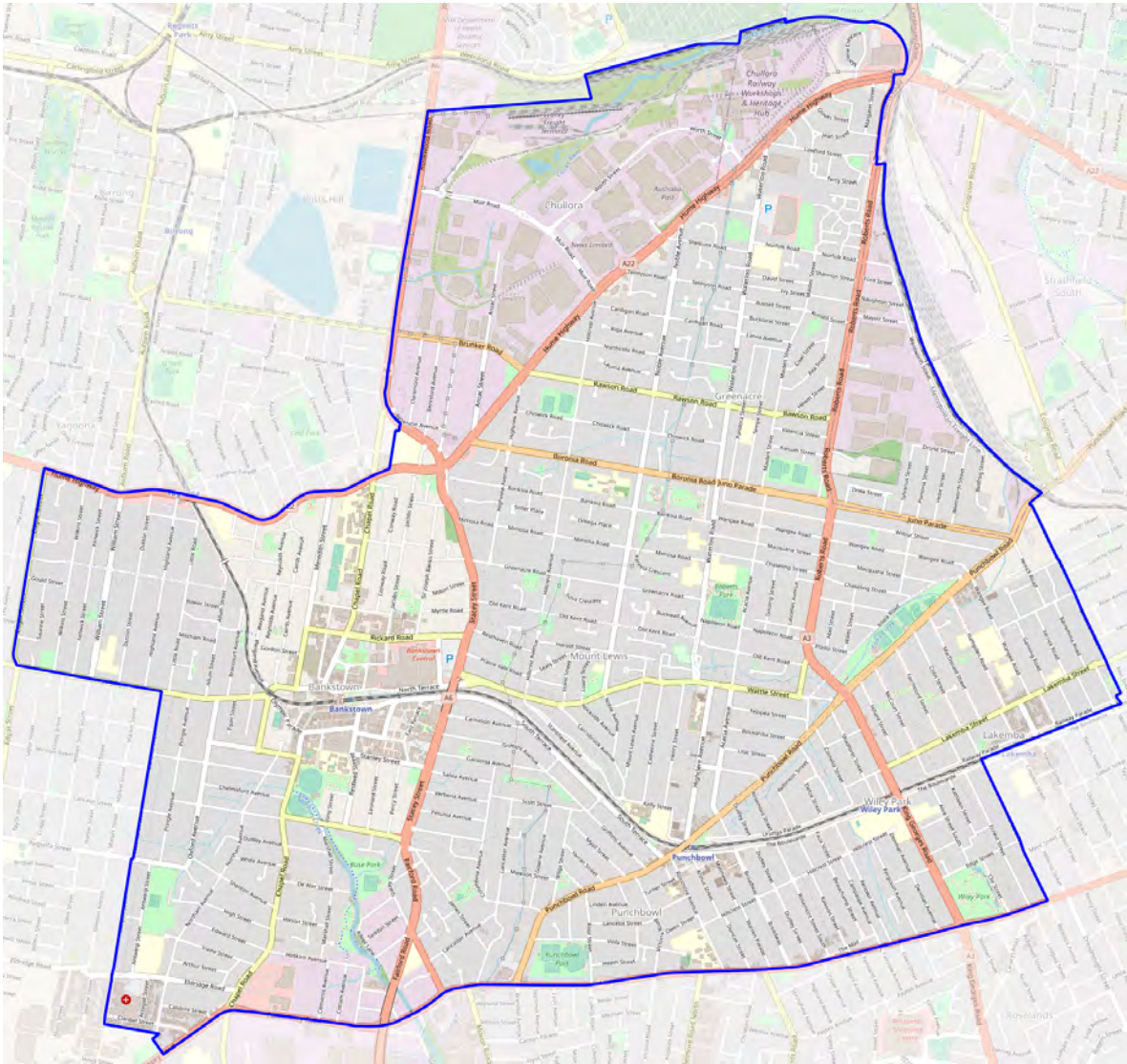


Figure 6: Possible alternative Bankstown

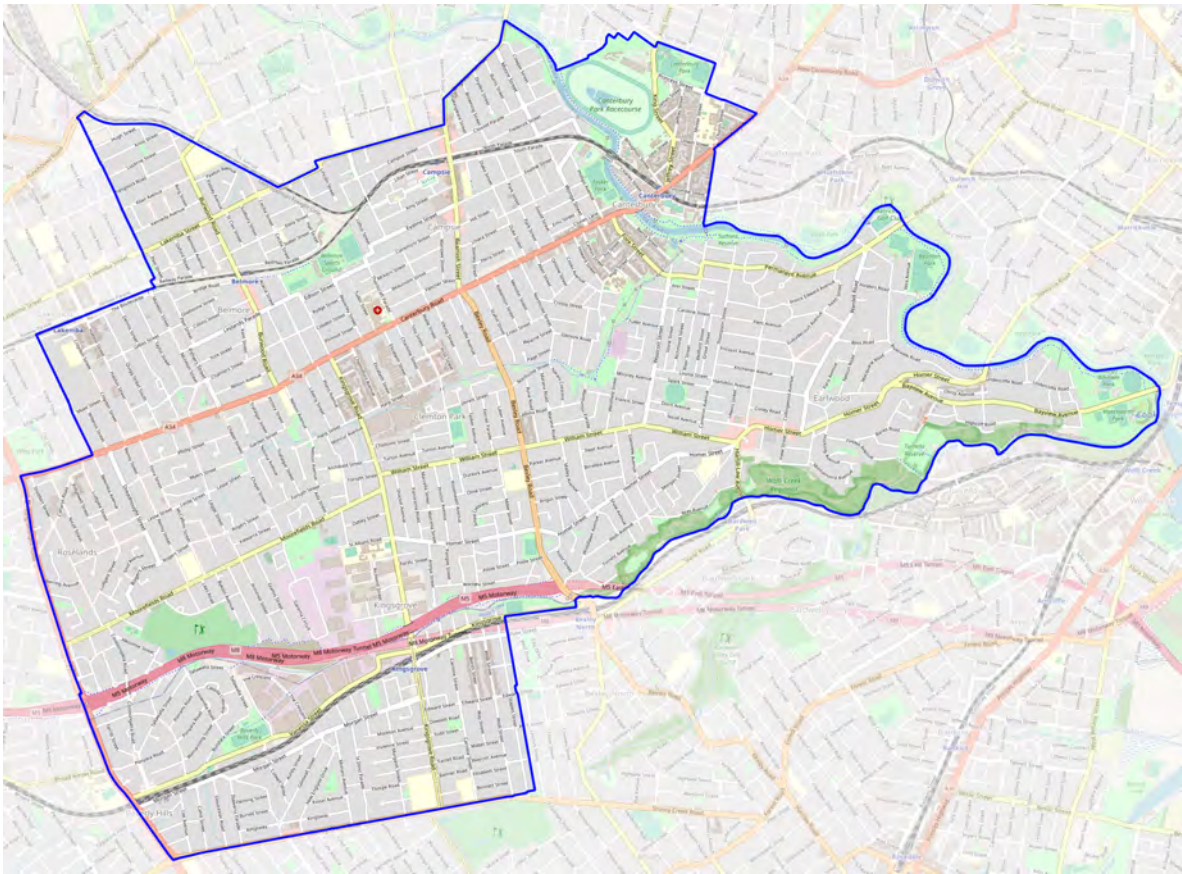


Figure 7: Possible alternative Canterbury



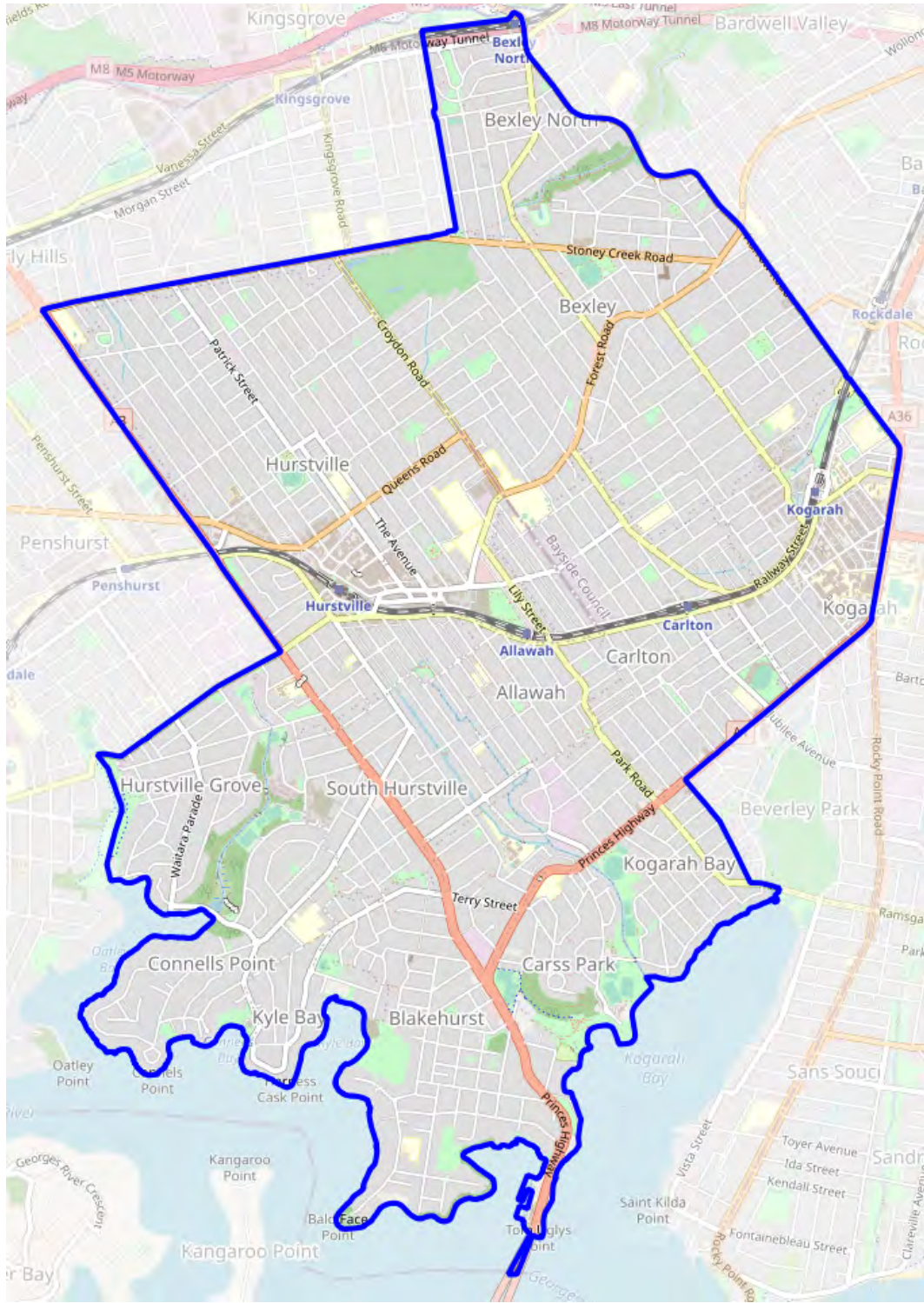


Figure 8: Possible alternative Kogarah

## 5.2 S142 (Markou)

I sympathise with the suggestion that it would be ideal for all of Campsie to remain united in Canterbury. As mentioned in the submission, Campsie is set to become a significant commercial and transport hub for the region over the coming years. However, I cannot see a way for the Panel to achieve this within the constraints of numerical requirements. The one possibility I can see is for Belmore to be split between Canterbury and Strathfield – and I am sure Markou and his community would not want that.

I note that the alternative I have presented in relation to **S133** satisfies the suggestion for only the southeast corner of Lakemba SSC to be transferred to Canterbury.

## 5.3 S148 (Gordon)

The alternative boundaries suggested by Gordon for East Hills are ideal, but it has some less-than-ideal consequences for adjoining districts, particularly Auburn. To accommodate for these changes, the eastern boundary of Fairfield would need to extend as far east as Hector Street. There are two options for Auburn to make up the resulting elector shortfall:

- Expand into Bankstown SSC as far south as Marion Street. (Note that expanding only to cover the rest of Yagoona SSC is not sufficient to get the district close to quota.) This is undesirable as we want to keep as much of Bankstown SSC within Bankstown district as possible. We especially do not want to have part of Bankstown SSC in a district like Auburn, which is not a district primarily focused on Bankstown-Canterbury LGA.
- Expand into Greenacre SSC as far south as Rawson Road. Greenacre is separated from the rest of the district by the Chullora industrial precinct. Moreover, this would split Greenacre in half.

## 5.4 S201 (Labor)

I have no opinion on the Labor Party's suggestion in relation to Kogarah and Oatley other than that I am not convinced that it is necessary or any better than the Panel's proposal.

## 5.5 S202 (Greenwich)

Should the Panel decide to pursue the changes suggested in this submission, the remainder of Ultimo (and a very small part of Pyrmont) should be transferred from Balmain to ensure that Sydney district does not exceed the quota by too much.

These changes are depicted in Figures 9 (Balmain), 10 (Sydney), and 11 (Newtown). Note that Figure 10 also reflects the minor change to the boundary between Coogee and Sydney suggested in my submission.

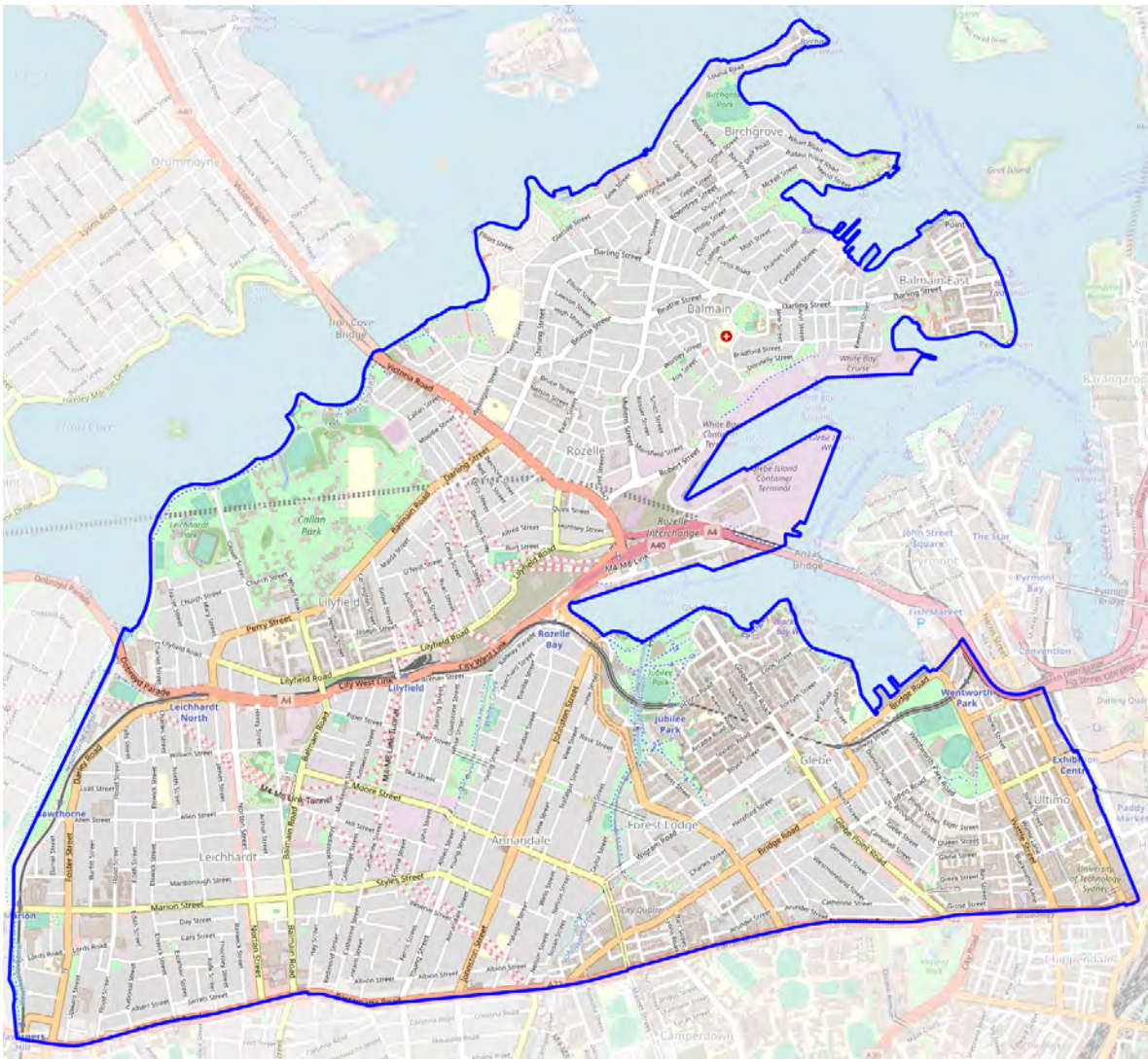


Figure 9: Possible alternative Balmain

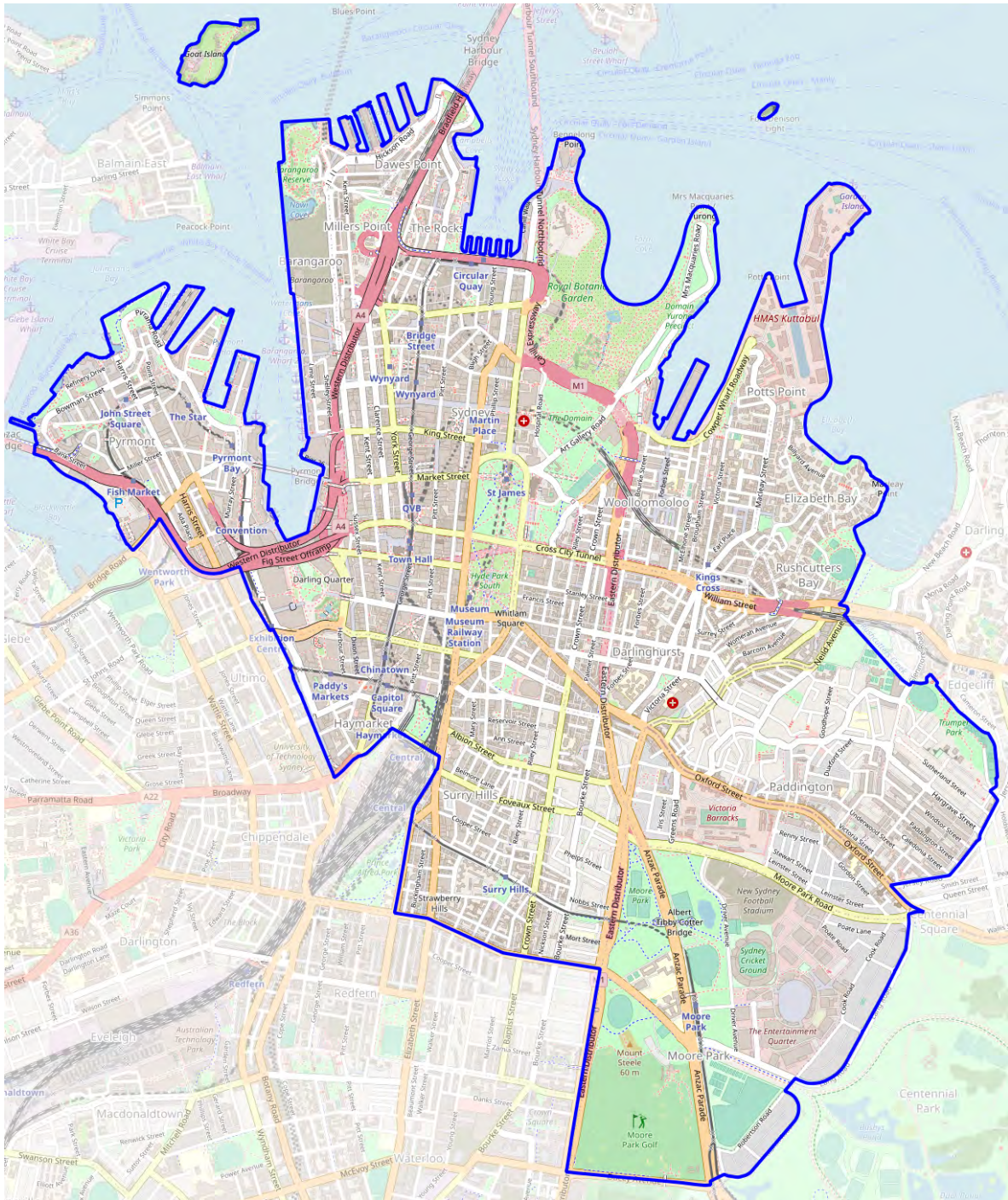


Figure 10: Possible alternative Sydney

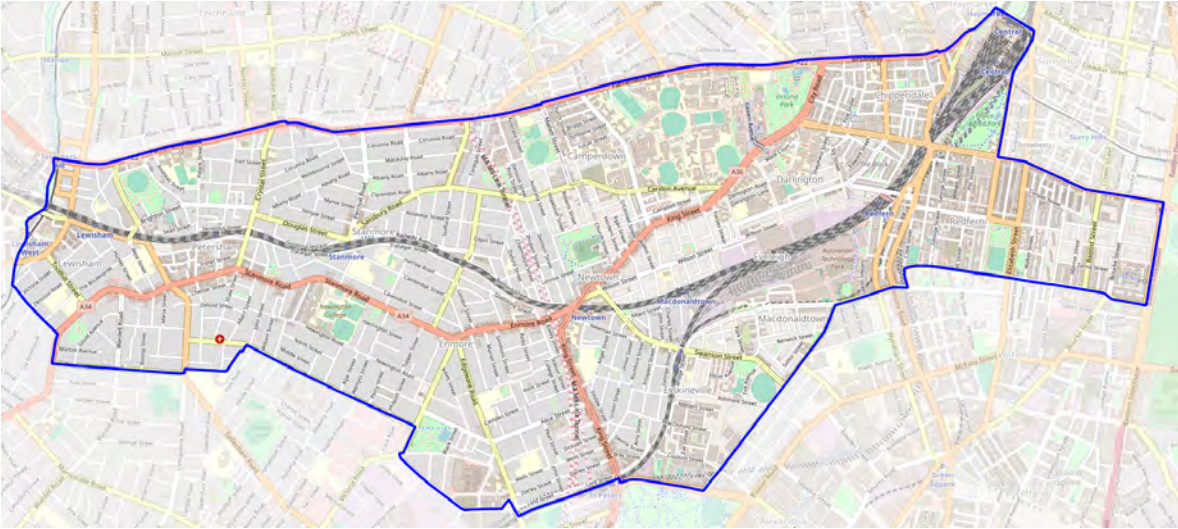


Figure 11: Possible alternative Newtown

## 5.6 S203 (Liberal)

The Liberal Party has taken an approach to their submission that is completely inconsistent with that taken to their suggestion. In their suggestion and comments, the Liberal Party repeatedly emphasised the need for districts to be as close to a quota as possible. (That part is fair enough.) They then suggested that the Panel should proactively tear apart communities of interest in new residential areas to make it easier to satisfy numerical requirements – going so far as to present a table outlining how this could be achieved! They then criticised the Labor and National parties for regional inequalities in their respective suggestions, and that numerous suggested districts deviated from a quota by more than 2.5%. They also went off at the Labor Party over a very minor data discrepancy involving 600 electors.

Now that the Panel has proposed its boundaries, all of a sudden the Liberal Party wants the Panel to amend the boundaries in a way that will produce massive malapportionment. With respect to the Sutherland Shire (see Section 3.3), their alternative leaves Cronulla, Heathcote, and Miranda collectively 15.7% below quota! Here, they are suggesting that Kogarah – a district with relatively low population growth – be left 5.5% below quota with an argument that is nowhere near strong enough to justify this.

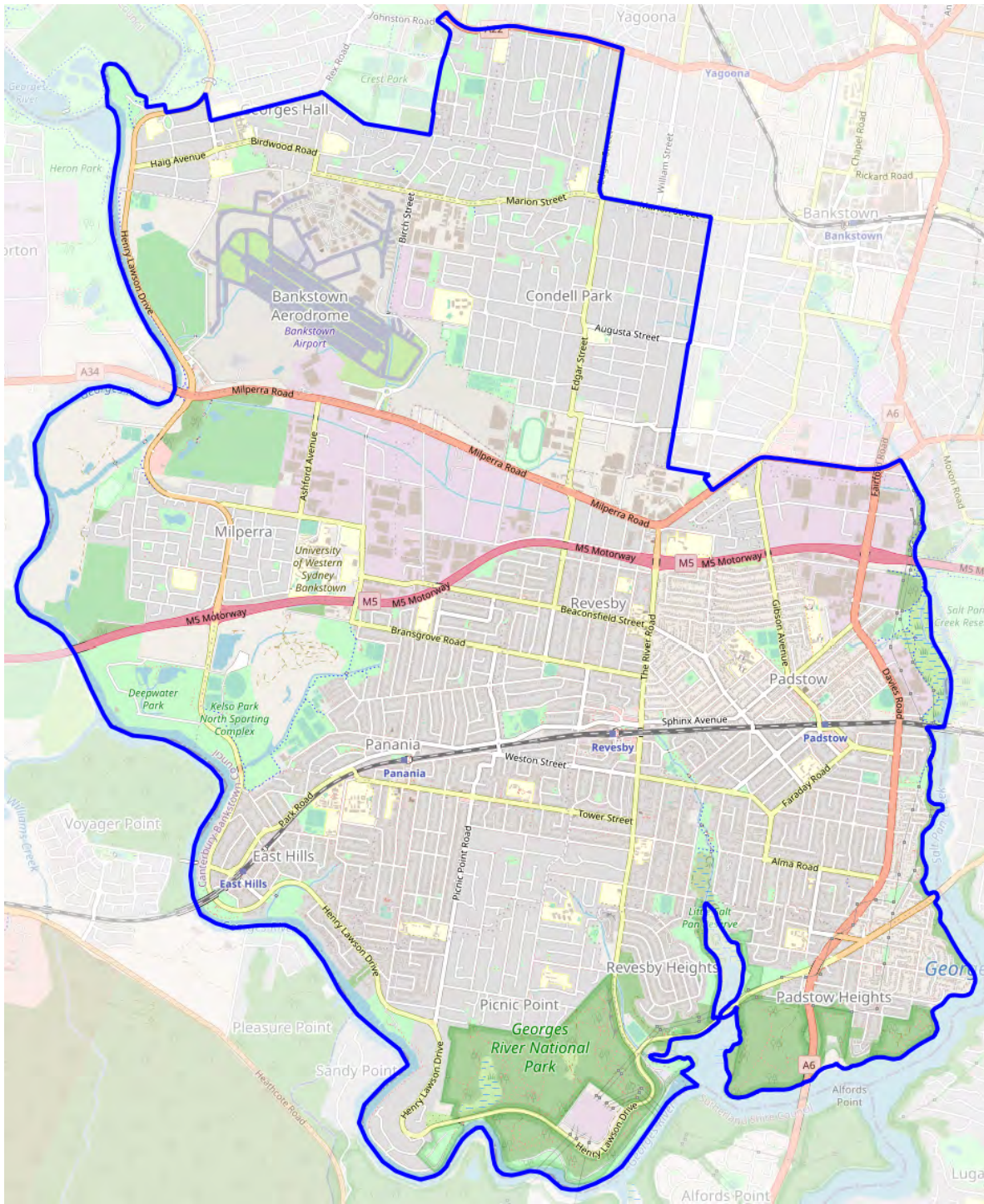


Figure 12: Possible alternative East Hills

The Liberal Party continues to defy their own remarks with their suggested changes to Fairfield district – which leaves it 6.1% below quota.

The one sensible suggestion put forward by the Liberal Party in this region is the minor realignment of the boundary between Bankstown and East Hills, depicted in Figure 12.

## 6 Penrith

### 6.1 S203 (Liberal)

The changes to Penrith and Londonderry presented in this submission do not respect the communities of interest and demography in this region. The Liberal Party does not offer a sufficient explanation of their claim that their suggestion better reflects communities of interest.

In my suggestion, I discussed the communities of interest within Londonderry district and its surrounds. There are two communities of interest that are especially important to consider when evaluating this suggestion:

- The semirural area in the north of Penrith LGA. As outlined in my suggestion, all suburbs in this area share a very unique, distinctive, and – dare I say – unusual profile.
- The newer suburbs in Blacktown and Penrith LGAs – particularly Caddens, Claremont Meadows, Jordan Springs, Marsden Park, and Ropes Crossing. These suburbs are characterised by younger families, large migrant populations, and high socioeconomic status.

The semirural suburbs to the north all share the following characteristics:

- a very high proportion of residents working in trades,
- a unique geography, largely covered by nature reserves of dense forest,
- most residential areas zoned as RU4, with a housing market dominated by acreages,
- medium-to-high socioeconomic status,
- a very large Maltese population,
- a large Catholic population.

There is a clear community of interest between these suburbs, and they should not be split across multiple districts without very good reason.

As using The Northern Road in its entirety would violate numerical requirements, the Liberal Party then suggests that Penrith panhandle into Caddens and Claremont Meadows, needlessly splitting the other community of interest I mentioned above. (It also awkwardly cuts Claremont Meadows in half.)



So I pose the question – Why would we want Penrith to extend into two new communities of interest it currently does not contain – splitting both between Penrith and Londonderry – when we could simply have Penrith extend into suburbs immediately east of Penrith SSC, which share a very strong community of interest and similarities with the rest of the existing Penrith district? It just does not make any sense.

The overall configuration of Londonderry district is well-purposed. The few problems with the Panel’s proposed Londonderry (including the splitting of the non-rural part of Cranebrook, which the Liberal Party also mentioned) are addressed by the alternative presented in my submission.

## **6.2 S148 (Gordon)**

Much the same can be said of the suggestion in this submission as of the Liberal Party’s, as the resulting Penrith district is almost identical. This suggestion leads to very peculiarly-shaped and non-compact Londonderry (or St Marys) district – wrapping around the southwest of Blacktown LGA. It would also disrupt the very simple boundary (the M7) between Blacktown and Mount Druitt.

## 7 Parramatta

### 7.1 S201 (Labor)

It is disappointing to see the Labor Party support the view expressed by the Liberal Party that the Panel should attempt to proactively split communities of interest in high-growth areas. We have redistributions for a reason – and if NSW Parliament could just amend the Constitution Act 1902 (specifically the current enrolment rule), future redistribution panels would have much greater capacity to minimise malapportionment at the time of elections.

Ideally, the suburbs around Sydney Olympic Park should be placed in Drummoyne or Strathfield districts. However, this is not feasible without significant changes to the proposal. The question is whether this area should remain in Auburn or be transferred to Parramatta.

Transferring the Olympic Park area to Parramatta has a few advantages. There are at least some significant transport links between Olympic Park and the remainder of the proposed Parramatta district, including ferries and bus routes. One of two bus routes servicing Newington is the 525 from Parramatta Station to Burwood Station via North Parramatta, Rydalmere, and Ermington. The Olympic Park area was also recently transferred to Parramatta LGA.

The changes suggested by the Labor Party are unnecessary and create a mess of boundaries at the intersection of Auburn, Fairfield, and Granville districts.

### 7.2 S203 (Liberal)

I strongly disagree with the Liberal Party's assessment of the proposed Epping and Parramatta districts. I have lived and attended school in Beecroft and Carlingford. With the exception of the placement of the Olympic Park area in Parramatta, the Panel's proposal is in concurrence with the understanding I have developed of this region and is a drastic improvement on the existing boundaries. The realignment of these two districts will be one of the greatest accomplishments of this redistribution.

With regard to the district of Parramatta, the Liberal Party believes the

proposed boundaries drastically alter the focus and community of this district from its existing communities of interest.

Continuing to use the M4 as a boundary between Granville and Parramatta avoids Parramatta crossing both the M4 and Parramatta Road and allows the suburb of Granville to be united in the electoral district of the same name, rather than the draft boundaries which split Granville unnecessarily.

I am surprised to hear this given that the Panel's proposal has only sought to respect LGA boundaries that were established as a result of forced amalgamations imposed by the Liberal Party.

Altering the Panel's proposal to place Oatlands in Parramatta district would significantly worsen Epping and Parramatta districts from a community of interest perspective. Oatlands is part of a band of high-SES, mostly low-to-medium-density suburbs in the northeastern end of Parramatta LGA. The other suburbs in this band are North Rocks and Carlingford. This northeastern portion of Parramatta LGA – centred around Carlingford SSC – is the focus of the proposed Epping district. Most of this area was previously part of The Hills LGA. The proposed Parramatta unites a different demographic – characterised by younger, medium-SES, and high-density suburbs centred around Parramatta CBD.

The Liberal Party believes retaining Oatlands in Parramatta is far preferable to the draft boundaries and alleviates some of the community of interest split that has occurred with the significant redraw of the Parramatta electoral district.

The Liberal Party appears to be suggesting that the existing boundary between Parramatta and Baulkham Hills – which savagely slices its way through Carlingford and North Rocks – is preferable to the proposed boundary of James Ruse Drive and Kissing Point Road. As I have just discussed, Oatlands has far greater similarities with Carlingford and North Rocks than it does with Parramatta and North Parramatta.

The suburb of Oatlands is located in the Parramatta LGA.

Previously, part of Oatlands – along with North Rocks and much of Carlingford – was part of The Hills LGA. These areas were amalgamated into Parramatta LGA despite significant community objection. Also note that the Panel’s proposed Parramatta district is *entirely contained* within Parramatta LGA and its southern boundary follows the LGA boundary. Sure, it might be nice if we could place all of Parramatta LGA within a single district. But the enrolment quota is 59,244, not 150,000. It reminds me of the Liberal Party’s justification for their suggested Sydney district:

These reflect bus and (soon) metro rail linkages between these areas with central Sydney.

Using this reasoning, you could justify uniting Penrith – or anywhere in the Sydney metropolitan area – and Sydney CBD within a single district.

Oatlands residents overwhelmingly shop in Parramatta, not to the east toward Epping.

So do residents of Carlingford, Dundas Valley, North Rocks, and Telopea. Again, the “affinity with Parramatta” demographic is far too large to be united within a single district.

I also want to highlight the fact that this argument is disingenuous. Epping has a standalone Coles. Parramatta has one of the largest shopping centres in the country. Is this a fair comparison? When my family lived in Beecroft, and later in Carlingford, we never shopped at Epping.

## 8 Hornsby and Ku-ring-gai

Aside from my own, there are three other submissions that express concern regarding the boundaries of the proposed Hornsby and Wahoonga districts.

I have investigated possible alternatives for Wahoonga (Ku-ring-gai) district further, and note that there are no submissions pertaining to the boundary between Wahoonga and St Ives (Davidson). I have concluded that it would be best to leave the boundary between Wahoonga and St Ives as proposed. The Panel could swap North Turramurra with parts of Pymble and West Pymble, however, I cannot find a way of doing this without awkwardly splitting the latter two suburbs.

### 8.1 S134 (Mak)

I agree that the Panel must review the proposed Hornsby district due to its disconnect-  
edness, particularly in relation to Cherrybrook. However, I disagree with the suggestion that Cherrybrook should be transferred to Wahoonga (or Ku-ring-gai) district. This will lead to a district spanning from Dural to Pymble.

While I lived in Cherrybrook, the only time we ever travelled through the Ku-ring-gai area was on the way to the beach. This is despite our family (unusually for Cherrybrook residents) frequently shopping at Hornsby Westfield. When you live anywhere south or west of Thornleigh – even if you travel to Hornsby, and even if you travel to Chatswood, and even if you travel via the M2 – it is easy to forget that the Ku-ring-gai area even exists because there is no use case for regularly travelling through it. I spent years living in Cherrybrook not knowing where Wahoonga, Turramurra, or Pymble are. There is virtually no community of interest between Cherrybrook and the Ku-ring-gai area.

The best solution is for Hornsby and Wahoonga districts to be aligned north-south, ensuring that Cherrybrook is united with suburbs such as Pennant Hills, Thornleigh, and Westleigh, filling in the corridor connecting Cherrybrook to Hornsby SSC. This will place Cherrybrook in a district in which it shares a strong community of interest. Hornsby will be well-connected with both the southern road connections (New Line Road and Castle Hill Road) as well as Galston Road. In my submission, I presented a concrete suggestion (including a map) for how this can be achieved, and discussed other benefits of this reconfiguration.

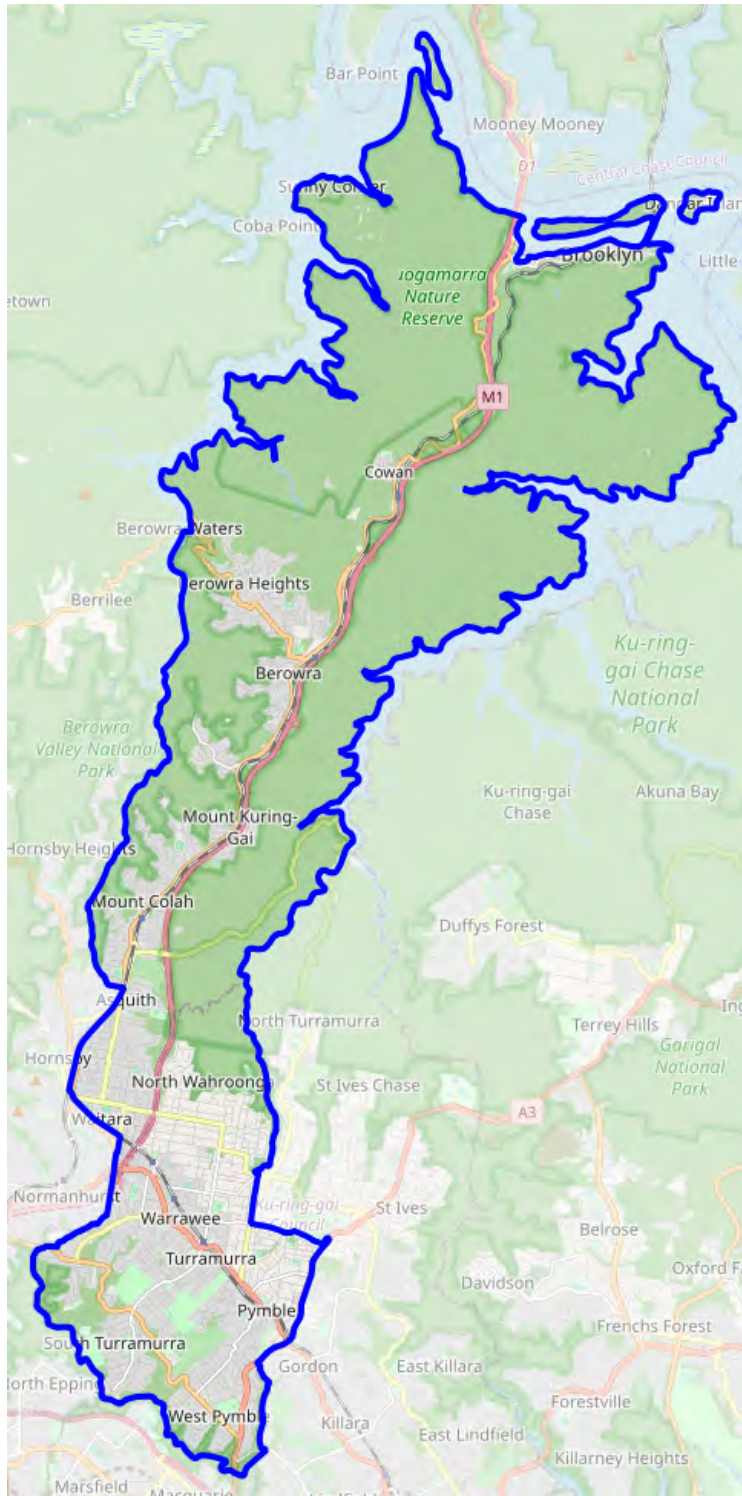


Figure 13: Alternative Ku-ring-gai

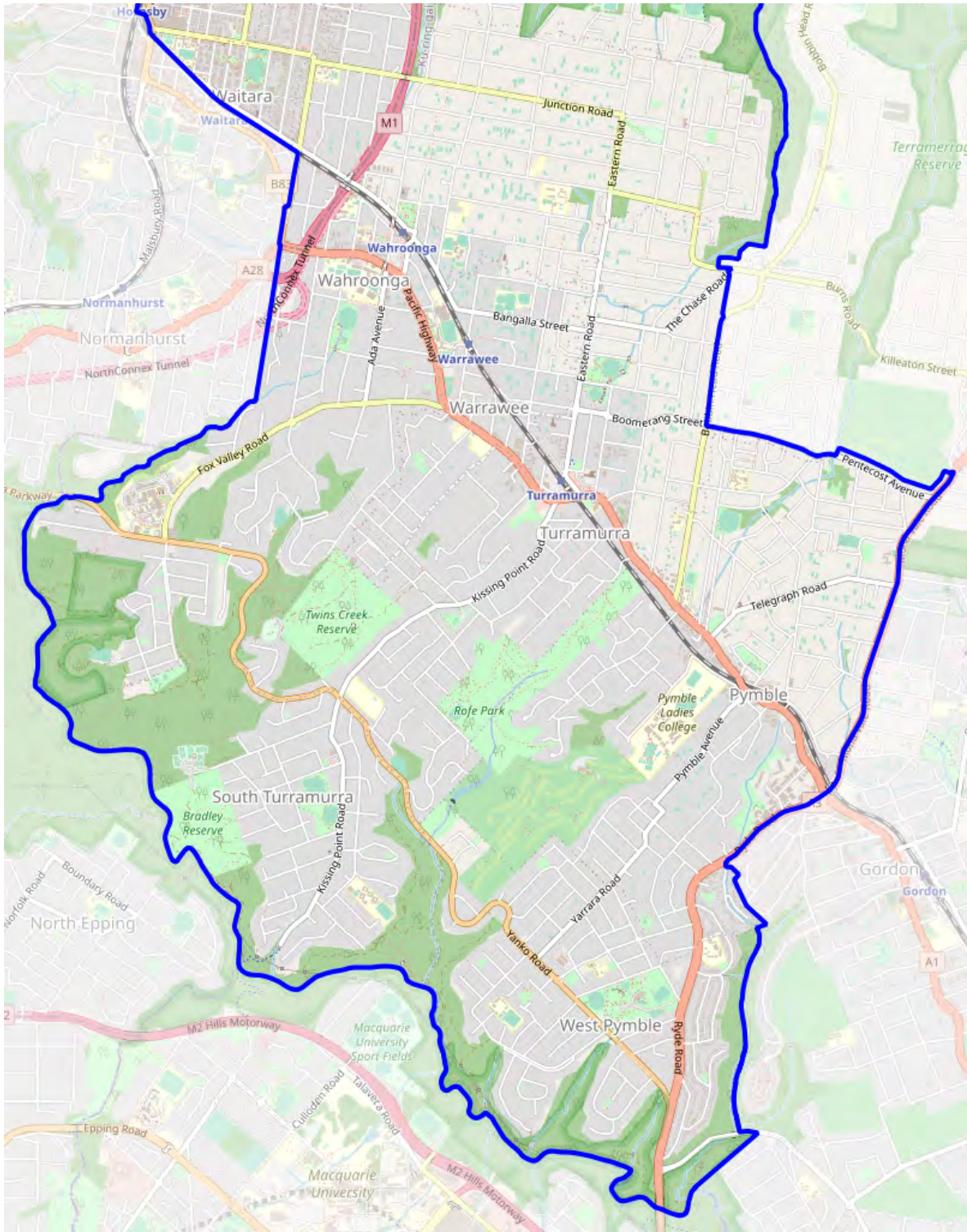


Figure 14: Alternative Ku-ring-gai (south)

Figures 13 and 14 depict the Wahroonga (Ku-ring-gai) district resulting from the changes suggested in my submission, with no alteration to the proposed boundary between this district and St Ives (Davidson). (Maps of Hornsby can be found in my submission or the attached geospatial files.)

## **8.2 S138 (Williams)**

The alternative presented in my submission will accommodate for this, uniting all of Asquith east of the railway line within Wahroonga (or Ku-ring-gai).

## **8.3 S177 (Abbott)**

I absolutely agree with the observations made in this submission. Westleigh should remain in Hornsby district, and be united with other suburbs in Hornsby LGA – not Ku-ring-gai. This is exactly what is achieved in the alternative presented in my submission.