

Report on the conduct of the election

Murray

State by-election

14 October 2017

The New South Wales Electoral Commission (NSWEC)

Address: Level 25, 201 Kent Street, Sydney NSW
2000 Australia
Postal: GPO Box 832, Sydney NSW 2001
Australia
Telephone: +61 2 9290 5999
Fax: +61 2 9290 5991
Website: www.elections.nsw.gov.au
Office hours: Monday-Friday, 9.00am-5.00pm

Copyright © State of New South Wales through the New South Wales Electoral Commission, 2018.

No part of this report may be reproduced by any process, except in accordance with the *Copyright Act 1968*. Please address all enquiries to the New South Wales Electoral Commission.

The Hon. Gladys Berejiklian MP
Premier
52 Martin Place
SYDNEY NSW 2000

Dear Premier

I am pleased to submit my report on the conduct of the State By-election held on Saturday, 14th October 2017 for the Legislative Assembly District of Murray.

Yours sincerely



John Schmidt
Electoral Commissioner
17 April 2018

Contents

Foreword.....	4
Overview	5
By-election outcome.....	5
Candidates standing for election	5
Cost data	5
By-election summary	6
By-election key dates.....	7
Murray Electoral District.....	8
Murray District profile	8
Area.....	8
Postcodes	8
Localities	8
Demographic profile	9
Historical electoral representation	10
Services to Electors	10
Advertising	10
Elector brochure	10
Media liaison.....	11
NSWEC website.....	11
Election reminder service	11
Service standards	11
Culturally and linguistically diverse electors.....	11
Electors with disabilities and access to polling places	12
Arrangements for voting before election day	12
Services to candidates and registered political parties	14
Nominations.....	14
Registrations	14
Electoral material.....	14
Conducting the Murray By-Election.....	15
Returning Officer arrangements.....	15
Election costs	15
Logistical and other support	15
Results.....	17
Enforcement of compulsory voting	18
Failure to vote	18
Compliance Operation – State by-elections October 2017	19
Comparison to 2015 State General Election and other by-elections	20
Turnout and informality rates.....	20
Non-voters and penalty notices.....	21
Appendices.....	22

List of Tables

Table 1: Final Results Murray By-election held 14th October 2017	17
Table 2: Potential offences under the Election Funding, Expenditure and Disclosures Act 1981	19
Table 3: Potential Offences under the Parliamentary Electorates and Elections Act 1912	19
Table 4: Penalty Notices, Murray by-election 14th October 2017 frequency and percentages	21

Foreword

This report provides information on the conduct of the by-election held for the Murray Electoral District on 14th October 2017 following the resignation of Mr Adrian Piccoli.

The Writ for the Murray By-election was issued on 25 September 2017, giving the New South Wales Electoral Commission (NSWEC) three weeks to prepare the by-election.

The conduct of the election proceeded smoothly. The turnout and informality rates for the Murray By-election were 83.98 per cent and 3.12 per cent, respectively.

The NSWEC provided the first preference count on election night and the Writ was returned on 20 November 2017.

The delivery of efficient, accurate and trusted elections, in accordance with NSW electoral legislation, relies heavily upon the capability of NSWEC staff. I would like to take this opportunity to record my thanks to these staff and the NSWEC's suppliers and contractors for their contribution and commitment to the successful conduct of the Murray By-election.

Overview

By-election outcome

The candidate elected at the Murray By-election on 14th October 2017 was Austin Evans (The Nationals) with 18,548 votes, 40.72 per cent of first preference votes.

Candidates standing for election

Candidate Name	Party Affiliation
Brian MILLS	Independent
Peter ROBINSON	Independent
Austin EVANS	The Nationals
Helen DALTON	Shooters, Fishers and Farmers
Michael KIDD	Country Labor
Ray GOODLASS	The Greens

Cost data

Cost of By-election	\$646,819
Cost per Elector	\$11.55

By-election summary

Enrolment	
Total Electors	55,985
Voting venues	
Pre-poll venues	7
Polling Places (including Pre-poll and Declared Institutions)	70
Staff employed for election	172
Voter Turnout	
Formal votes	45,551
Informal votes	1,466
Total votes	47,017
Voter turnout rate	83.98%
Formality rate	96.88%
Non-voting penalty notices issued	6,750 ¹
Penalty notices issued as % of Roll	12.06%
Voting Options used by Electors	
Ordinary	29,323
iVote	3,190
Postal	1,025
Pre-poll	13,058
Declared Institution	178
Enrol and vote	120
Provisional/Silent	42
Absent	81
Candidates	
Total candidates	6

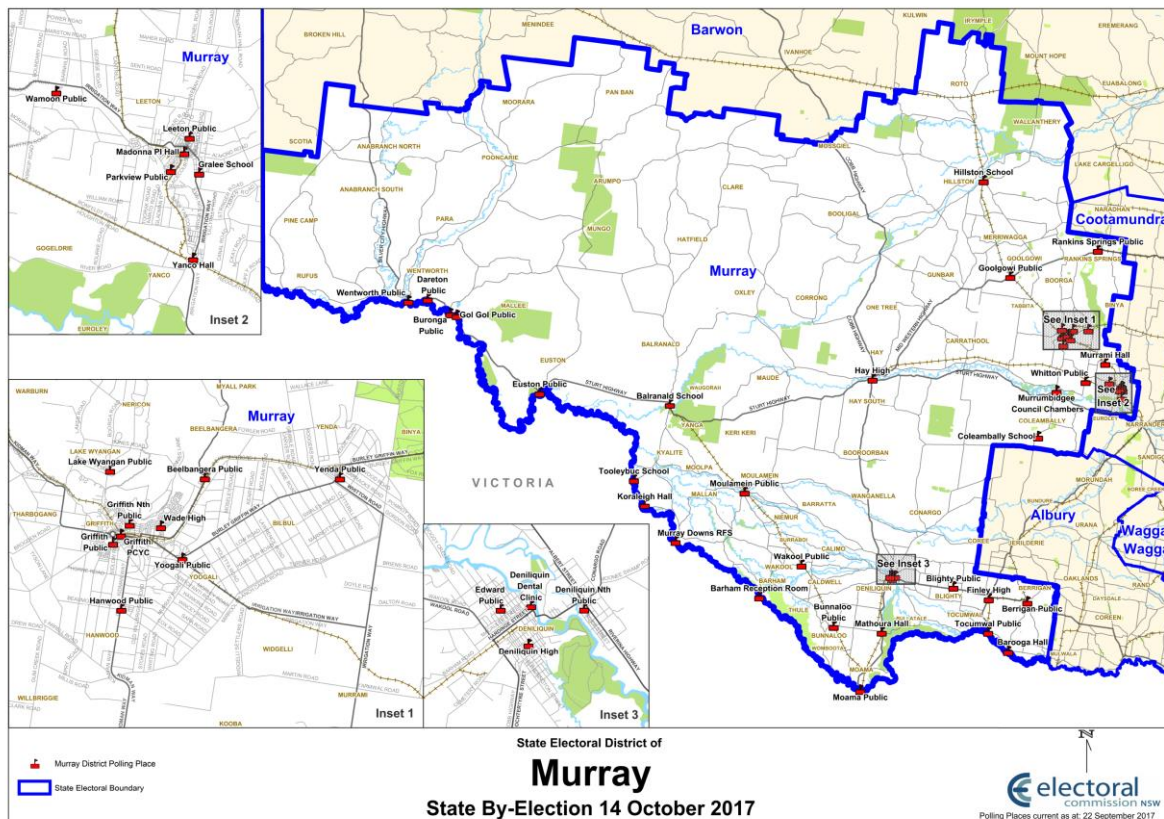
¹ A penalty notice is withdrawn if an elector provides a valid excuse for not voting. At the date of this report the enforcement process for failure-to-vote penalty notices for this by-election had not yet been completed.

By-election key dates

Date	Matter
Monday 25 September 2017	Issue of Writ
Monday 25 September 2017	Commencement of capped expenditure period
Monday 25 September 2017	Candidate and third-party campaigner registration opened
Monday 25 September 2017	Close of Rolls (6pm)
Monday 25 September 2017	Candidate nominations opened
Wednesday 27 September 2017	Close of party nominations at NSWEC HO (12noon)
Thursday 28 September 2017	Close of nominations at RO office (12noon)
Thursday 28 September 2017	Candidate registrations closed (12noon)
Thursday 28 September 2017	Ballot paper draw (2pm)
Thursday 28 September 2017	Registration of Electoral Materials commenced
Monday 2 October 2017	Pre-poll voting opened (8am-6pm)
Monday 25 September 2017	iVote Registration opened (10am)
Friday 6 October 2017	Registration of Electoral Material closed (5pm)
Friday 6 October 2017	Registration of third-party campaigners closed (5pm)
Monday 9 October 2017	Declared Institution voting started
Monday 2 October 2017	iVote voting opened (8am)
Wednesday 9 October 2017	Postal vote application (outside Australia) closed (6pm)
Wednesday 11 October 2017	Postal vote application (within Australia) closed (6pm)
Friday 13 October 2017	Pre-poll voting closed (6pm)
Friday 13 October 2017	Declared Institution voting ended
Saturday 14th October 2017	Election Day (8am-6pm)
Saturday 14th October 2017	End of capped expenditure period
Saturday 14th October 2017	iVote registration closed (1pm)
Saturday 14th October 2017	iVote voting closed (6pm)
Wednesday 18 October 2017	Receipt of postal votes declarations closed (6pm)
Monday 20 November 2017	Writ returned
Tuesday 21 November 2017	Last day for return of Writ

Murray Electoral District

Murray District profile



The State Electoral District of Murray covers all or part of the local government areas of Balranald, Berrigan, Carrathool, Edward River, Griffith, Hay, Leeton, Murray, Murrumbidgee, Wakool and Wentworth Councils.

Area

107,362.20 square kilometres

Postcodes

2646, 2647, 2648, 2652, 2665, 2669, 2675, 2680, 2681, 2700, 2703, 2705, 2706, 2707, 2710, 2711, 2712, 2713, 2714, 2715, 2716, 2717, 2731, 2732, 2733, 2734, 2735, 2736, 2737, 2738, 2739, 2878, 3579, 3585, 3586, 3644

Localities

Anabranche North, Anabranche South, Aratula, Argoon, Arumpo, Balranald, Barham, Barooga, Barratta, Beelbanger, Benerembah, Berrigan, Bilbul, Binya, Birganbigil, Blighty, Boeill Creek, Booligal, Boomanoomana, Boorga, Boooroban, Bullatale, Bunnaloo, Buronga, Burraboi, Caldwell,

Calimo, Carrathool, Clare, Cobramunga, Coleambally, Conargo, Coomealla, Corbie Hill, Coree, Corrong, Cudgel, Cunninyeuk, Curlwaa, Daretton, Darlington Point, Deniliquin, Dhuragoon, Dilpurra, Ellerslie, Erigolia, Euroley, Euston, Finley, Gogeldrie, Gol Gol, Gonn, Goodnight, Goolgowi, Griffith, Gunbar, Hanwood, Hartwood, Hatfield, Hay, Hay South, Hillston, Ivanhoe, Keri Keri, Koraleigh, Kyalite, Lake Brewster, Lake Wyangan, Lalalty, Leeton, Lindifferon, Logie Brae, Mabins Well, Mallan, Mathoura, Maude, Mayrung, Melbergen, Mellool, Merriwagga, Merungle Hill, Moama, Monak, Monia Gap, Moolpa, Moonbria, Morago, Mossgiel, Moulamein, Mourquong, Mulwala, Murrami, Murray Downs, Myall Park, Myrtle Park, Nericon, Niemur, Noorong, One Tree, Oxley, Pan Ban, Paringi, Pine Lodge, Pomona, Pooncarie, Pretty Pine, Rankins Springs, Roto, Rufus, Savernake, Speewa, Stanbridge, Steam Plains, Stony Crossing, Stud Park, Tabbita, Tantonan, Tharbogang, Thule, Thyra, Tocumwal, Tooleybuc, Tooranie, Trentham Cliffs, Tullakool, Tuppal, Wakool, Wallanthery, Wandook, Wanganella, Warburn, Warragoon, Warrawidgee, Waugorah, Wentworth, Wetuppa, Whitton, Widgelli, Willbriggie, Willurah, Womboota, Yanco, Yanga, Yenda, Yoogali.

Demographic profile

The 2016 census revealed that Murray had 82,908 residents of whom 49.9 per cent were female (41,368) and 50.1 per cent were male (41,536). Indigenous Australians made up 5.2 per cent (4,298) of the population.

The median age was 42 years which is above the overall average for Australia of 38. Approximately 16,865 of the population was aged 65 or over (20.3 per cent) 25.5 per cent were aged under 20.

Almost 65,132 (78.6 per cent) residents were born in Australia. The most frequent countries of birth after Australia were Italy (1.7 per cent), India (1.5 per cent), England (1.2 per cent), and New Zealand (1.2 per cent).

Throughout the electorate 81.4 per cent of people speak only English at home. Other languages spoken at home included:

- Italian (3.1 per cent)
- Punjabi (1.1 per cent)
- Mandarin (0.5 per cent)
- Samoan (0.3 per cent)
- Gujarati (0.3 per cent)

Historical electoral representation

Previous recent State representation for the Murray District has been:

Date	Name	Party
2015-2017	Adrian PICCOLI	National Party
2007-2015	John Douglas WILLIAMS	National Party
1999-2007	Peter Laurence BLACK	Australian Labor Party
1985-1999	(Jim) James Richard SMALL	National Party
1980-1984	Timothy Andrew FISCHER	National Party

Services to Electors

The NSWEC undertook an advertising and communication campaign to raise awareness of the Murray By-election and provide necessary information to electors and candidates.

The major aspects of this strategy involved:

- paid advertisements
- an elector brochure sent to each enrolled elector;
- active social media posting and moderation (Facebook, Twitter, Instagram); and
- media liaison

All communications activity directed people to the NSWEC website which provided further detailed information about the election.

Advertising

The *Parliamentary Electorates and Elections Act 1912* (PEE Act) prescribes that certain advertising must occur. The advertising strategy for the Murray By-election involved placing newspaper advertisements in state-wide and local newspapers supporting the following phases of the election:

- Issue of Writ / Nominations information
- Early voting options – including pre-poll, postal, iVote and register electoral material
- Remember to vote – including a list of candidates

Paid advertisements comprised print, boosted Facebook posts and digital display. Digital display advertisements were placed to target eligible iVote users who were interstate or overseas.

Elector brochure

All enrolled electors were sent a personalised elector brochure to their nominated mailing address. The brochure contained information about the by-election including early voting options and a list of polling places.

Media liaison

Targeted media releases supported the various phases of the election. The media officer provided live and pre-recorded radio interviews as required and answered media enquiries to assist the media cover the elections.

NSWEC website

The NSWEC's website provided a range of information concerning participation in the by-election, including the election timetable, employment opportunities, enrolment, polling places, candidate requirements, names of candidates and poll results.

Use of the NSWEC's website is typically greatest on election night when users seek information on results. On election night, the Murray By-election results page had 5,985 unique views.

Election reminder service

This reminder service enables electors to register with the NSWEC to be kept notified, by SMS message, email, or both, of impending elections and be sent one or more reminders to vote.

For the Murray by-election, the total number of email reminders sent was 1,431. There were 1,406 SMS reminders. In all, 863 electors availed themselves of the service.

Service standards

The NSWEC seeks to meet the expectations of electors about its electoral services and to this end has developed a Service Charter which outlines the NSWEC's election service standards. The Election Service Charter 2017 – 2020 was the overall service standard for this by-election. In short, the NSWEC undertakes to:

- Foster participation in the democratic process
- Provide seamless service delivery
- Be customer focussed and commercially minded
- Be innovative and fast adaptors

The Service Charter can be found at Appendix D.

Culturally and linguistically diverse electors

The Murray Electoral District is not considered to be a high culturally and linguistically diverse (CALD) district. Nevertheless, all electors had access to interpreters via the Translating and Interpreting Service. This service was promoted in the on-line training for polling place Managers and Election Officials.

Electors with disabilities and access to polling places

Securing appropriate premises for polling places can be difficult. The NSWEC does not own facilities within electoral districts. The pool of available rental premises is limited by the short-term nature of the lease and the NSWEC's space, accessibility, location and workplace health and safety requirements.

As far as practically possible, the NSWEC aimed to provide accessible and appropriately sited polling places for the Murray By-election. Detailed information was provided to assist electors with mobility issues or other disabilities to locate the most suitable polling place. This access information was provided on the NSWEC's website, in the elector brochure and by NSWEC staff.

Arrangements for voting before election day

Electors who were unable to vote on election day had the opportunity to vote early using iVote, postal or pre-poll voting (including voting in Declared Institutions).

A total of 17,451 electors voted early, representing over one third of total votes cast. This volume is in line with a general trend of early voting across NSW and other Australian jurisdictions.

Postal voting

Electors who were unable to attend a polling place on election day were able to apply for a postal vote. Postal vote application forms were available from the Returning Officer and the NSWEC's website.

Of 2,366 Postal Votes Issued, 1,029 were accepted, 593 rejected and 744 not scrutinised, because they were either returned too late or not returned at all.

Technology assisted voting

The PEE Act provides for technology assisted voting to be used in Parliamentary by-elections.

Both online and telephone voting (iVote) were provided for the Blacktown by-election, with online voting being the preferred option for electors who use iVote. Electors were eligible to use iVote if they:

- had a visual impairment
- had a disability
- had their place of living 20 kilometres or more from a polling place or
- were outside NSW on election day.

There were 3,190 iVotes cast (6.78 per cent of total votes).

Pre-poll voting

Pre-poll voting was open to electors at the Returning Officer's office and the NSWEC's office in the Sydney CBD. The pre-poll locations were listed in the elector brochure and on the NSWEC website.

Pre-polling for electors who were overseas or interstate was provided via postal voting and iVote.

Pre-poll Returning Officer's office

Murray RO Office, 2nd Floor, 130-140 Banna Avenue, Griffith NSW 2680

Monday 2 October – Friday 13 October 2017

Monday – Friday 8.00am – 6.00pm

Thursday 12 October 8.00am – 8.00pm

Saturday 9.00am – 5.00pm

Closed on Sunday

Pre-poll NSWEC head office

Level 25, 201 Kent Street Sydney

Monday 2 October – Friday 13 October 2017

Monday - Friday: 9.00am – 5.00pm

Closed Saturday and Sunday.

Polling places

As noted earlier, securing appropriate premises for polling places and the Returning Officer's office can be difficult. The pool of available rental premises is limited by the short-term nature of the lease and the NSWEC's space, accessibility, location and workplace health and safety requirements.

Declared Institutions

The PEE Act allows the Electoral Commissioner to appoint hospitals, convalescent homes or similar institutions as places at which residents or inpatients of those institutions can cast their votes before election day.

In the conduct of the Murray By-election, 30 venues were designated as Declared Institutions and, of these, 14 requested postal votes. Election staff visited the other Declared Institutions between 9 October 2017 and 13 October 2017.

Services to candidates and registered political parties

Nominations

Nomination forms were available from the NSWEC website and could be lodged after the issue of the Writ (25 September 2017). The Writ set 27 September 2017 as the date for close of nominations for political parties lodging forms with the NSWEC's head office and 28 September 2017 for candidates lodging forms with the Returning Officer.

Registered Officers (or Deputy Registered Officers) of registered political parties could nominate candidates at the NSWEC's office in the city or at the Returning Officer's office in Griffith. Independent candidates could only nominate at the Returning Officer's office.

There were six candidates. Following the close of nominations the Returning Officer conducted a draw to determine the order of candidates on the ballot paper.

Registrations

Candidates and third-party campaigners were required to be registered for the by-election.

Candidates who intended receiving political donations or incurring electoral communication expenditure before nominating were required to register and appoint an official agent. Candidates who did not previously register were deemed to be registered from nomination day.

Third-party campaigners were required to register before incurring \$2,000 in electoral communication expenditure during the capped State expenditure period.

Registration forms could be lodged with the NSWEC from the issue of the Writ (25 September 2017). Candidates had until 28 September 2017 to lodge a registration form, while registrations for third-party campaigners closed on 6 October 2017.

Six candidates were registered for the by-election. Three third-party campaigners applied to be registered for the by-election.

Electoral material

Registration of electoral material was handled centrally. Registration of this material opened on 28 September 2017.

Close of applications to register electoral material was 5pm, 6 October 2017.

Conducting the Murray By-Election

Returning Officer arrangements

The Returning Officer's office was situated at 2nd Floor, 130-140 Banna Avenue, Griffith NSW 2680.

Returning Officer's duties include:

- set up and decommissioning of the (temporary) office;
- training of office staff and polling place managers;
- arranging voting at polling places and Declared Institutions;
- issuing and processing postal and pre-poll votes;
- dealing with enquiries from candidates and electors and other feedback;
- processing candidate nominations and electoral material; and
- counting votes and declaring the results of the election.

A Returning Officer Support Officer was appointed in the NSWEC's head office to provide support on electoral matters and procedures.

Election costs

Key cost drivers for the election included:

- election officials wages;
- office accommodation for the Returning Officer;
- information and technology support;
- polling places;
- number of electors in the electorate;
- newspaper advertising; and
- printing/materials for polling places.

The final cost of NSWEC conducting the election was \$646,819 (GST exclusive).

This was made up of election staffing \$227,077; venues \$21,476; logistics \$21,504; ballot papers and electoral rolls \$9,347; electronic voting \$159,056 and other miscellaneous items \$208,359. The cost per elector was \$11.55.

Logistical and other support

Staffing

The majority of casual election staff were employed to work on Election Day in polling places as polling place Managers or Election Officials. In addition casual staff were employed in the Returning Officer's office to recruit staff, pack and prepare materials for each polling place, operate pre-poll voting, visit Declared Institutions, count votes and pack materials after the election.

Recruitment of election staff took place via the NSWEC on-line registration system. There was 172 people employed to work at the Election. The election staff was made up of:

- 47 polling place managers,
- 3 deputy polling place managers,
- 28 Declaration Vote issuing officers,
- 93 Election Officials
- 1 Returning Officer.

Of the staff employed, 8 staff members identified as being Aboriginal (4.65%), 5 election staff members had a disability (2.91%) and 13 (7.56%) staff members spoke another language other than English.

All polling place staff must complete an online training program that is mapped to their job role. Polling place staff are also issued with an Instruction Manual to prepare them for election day.

Supplies

A total of 82,400 ballot papers with security backgrounds were printed by a security printer. A copy of the ballot paper is at Appendix C.

Waste management

The NSWEC is covered by the NSW Government's waste management policy. In providing electoral services the NSWEC seeks, wherever possible, to use paper and cardboard comprising recycled content and to ensure that the paper and cardboard materials are themselves recycled.

In the Murray By-election, standard cardboard materials were used in polling places. These included voting screens, wheelchair screens, ballot boxes, caution signs and recycle bins. After the election, the materials were taken to the nearest council recycling facility.

IT support

For the Murray By-election the Election Management Application was used. This is an internet based application for the use of Returning Officers, office assistants and head office staff. It consists of a suite of software modules to assist with managing election processes such as enquiries, election day staffing, candidate nominations, the distribution and return of declaration votes, results and non-voter administration.

In addition, IT equipment is provided to the Returning Officer's office and polling places.

Results

On election night, the NSWEC provides the result of counts conducted at each polling place for the first preference vote for each candidate, and the result of the notional count for the two candidates considered most likely to receive the greatest number of votes (the two candidate preferred vote). The results are shown on election night from 6.30pm and progressively updated.

On the day after polling day, all the ballot papers from every polling place are recounted to ensure the election night count is accurate (the check count). Declaration votes are added progressively with postal votes accepted up to 6pm on the Wednesday after election day. At this point, the final distribution of preferences is conducted.

Candidates' scrutineers are welcome to attend all counts.

Table 1: Final Results Murray By-election held 14th October 2017

Candidates	Votes	
Brian MILLS	1,363	
Peter ROBINSON	1,072	
Austin EVANS	18,548	ELECTED
Helen DALTON	14,332	
Michael KIDD	9,324	
Ray GOODLASS	912	
Total Formal Votes	45,551	
Total Informal Votes	1,466	
Total Votes	47,017	
Absolute Majority	22,776	

More detailed information on the counts is available on the NSWEC's website www.elections.nsw.gov.au

Enforcement of compulsory voting

Failure to vote

Under electoral legislation, the Electoral Commissioner is required to issue 'Failure to Vote' notices to those electors whose names were not marked off the electoral roll as having voted or recorded as providing a valid excuse. The penalty for not voting in a State by-election is \$55.00. The funds generated from penalty notices are not retained by the NSWEC but are paid into NSW Government consolidated revenue.

All electoral rolls marked at polling places or in the Returning Officer's office were scanned after election day to create a list of non-voters for the Murray State by-election.

The number of electors who were issued with penalty notices was 6,750 (12.06 per cent of electors enrolled). The remainder of electors who did not vote had provided a valid excuse for not voting either prior to or immediately after election day.

Initial Apparent Failure to Vote notices for the by-election were issued on 10th January 2018. Responses can be submitted either by mail, email, or through the NSWEC online portal. The notice provides options to satisfy the matter by either

- Paying the penalty of \$55.00;
- Notifying us of the polling place in which they attended;
- Submitting a reason for failure to vote for review; and/or
- Electing for the matter to be dealt with by a court

If a person does not respond to the initial Apparent Failure to Vote notice by the due date (28 days from the issue of the notice), a reminder notice is issued, giving a further 28 days to deal with the matter.

If the elector's reason for failing to vote is not accepted, a Final Notice will be issued giving two options: paying the penalty of \$55.00 or electing for the matter to be dealt with by a court. Final notices will be issued by the end of April 2018.

If no response to the final notice is received by the due date, the matter is referred to Revenue NSW for enforcement action.

To help electors avoid this penalty in future elections, the penalty notice advises non-voters of the availability of the NSWEC's 'Election Reminder Service'.

Compliance Operation – State by-elections October 2017

Overview and Objectives

The NSWEC is responsible for ensuring compliance with and enforcement of the PEE Act and the *Election Funding, Expenditure and Disclosures Act 1981* (EFED Act). The Funding, Disclosure and Compliance (FDC) Division administers the enforcement functions.

The By-election Compliance Operation provides an opportunity for the NSWEC to further its objective of establishing a stronger regulatory function by:

- proactively engaging with stakeholders
- ensuring compliance with legislations
- promoting enforcement capabilities

Table 2: Potential offences under the Election Funding, Expenditure and Disclosures Act 1981

Section	Offence	Penalty
s96AA s96l(1)	Third-party Campaigner – Failure to register and appoint an agent`	\$44,000 or 2 years imprisonment or both

Table 3: Potential Offences under the Parliamentary Electorates and Elections Act 1912

Section	Offence	Penalty
s90(4)	Offences by scrutineers	\$1100
s93(2)	Offences at polling place	\$550
s112(1)(d)	Multiple Voting	\$11,000 or 3 years imprisonment
s113	Obstructing elector	\$55
s114(4)	Contravene direction of Returning Officer or polling place manager	\$550
s114U	Scrutineer Offences	\$1100 or 6 months imprisonment
s150	Treating	\$11,000 or 3 years imprisonment
s151	Intimidation	\$11,000 or 3 years imprisonment
s151A	Printing false information	Corporation: \$5500 Individual: \$1100 or 6 months imprisonment
s151B	Poster offences	\$330
s151E	Distribution of election material – Name, address, author and printer details	\$1100 or 6 months imprisonment
s151F	Distribution of electoral material on polling day	\$1100 or 6 months imprisonment
s151H	Canvassing at polling place	\$550

Execution

The Compliance Operation took place from the opening of pre-poll on 2 October 2017 until election day. Two investigators from FDC participated in the operation covering all three by-elections held in October 2017. In addition to their functions as inspectors under the EFED Act, they were also appointed to the role of Election Assistant under the PEE Act so that they could exercise functions under that Act throughout the operation.

Investigators attended pre polling venues for the opening and closing of pre-poll. On Election Day, investigators were in the field inspecting polling places and speaking with various stakeholders, including the Returning Officer, polling place managers, candidates and their campaigners or volunteers. The presence of the investigators served the dual purpose of educating stakeholders in their obligations under the PEE Act and the EFED Act and acting as a deterrent to non-compliant behaviour.

In total 11 polling places in the Murray District were visited on Election Day. No significant breaches were detected.

There were two complaints received regarding alleged breaches of legislation for the Murray By-election.

Comparison to 2015 State General Election and other by-elections

Turnout and informality rates

In the 2015 NSW State Election there were eight candidates for the Murray District. The number of electors enrolled was 55,087, the voter turnout figure was 87.50 per cent and the informality rate was 3.74 per cent.

At the October 2017 by-election, there were six candidates and the enrolment figure had increased to 55,985. The turnout and informality rates were 83.98 per cent and 3.12 per cent, respectively. Traditionally, turnout rates tend to be lower in by-elections than general elections and informality rates higher.

The turnout for the Murray by-election was higher than the average for State by-elections over the past five years, (78.93 per cent), and the informality rate lower than the average across the same period of 3.63 per cent.

Non-voters and penalty notices²

There were 6,750 penalty notices (PNs) issued for the Murray by-election (12.06 per cent of those on the electoral roll). This is higher than the Cootamundra and lower than the Blacktown by-elections, both of which took place on the same date.

Table 4: Penalty Notices, Murray by-election 14th October 2017 frequency and percentages

By-election	No. on Roll	PNs issued	No. PN as % Roll
Blacktown	55,926	8,737	15.62
Cootamundra	53,529	5,409	10.10
Murray	55,985	6,750	12.06

² As noted earlier, a penalty notice is withdrawn if an elector provides a valid excuse for not voting. At the date of this report the enforcement process for failure-to-vote penalty notices for these by-elections had not yet been completed.

Appendices

Appendix A: Murray By-election 14th October 2017 elector brochure	23
Appendix B: Murray By-election 14th October 2017 polling places.....	24
Appendix C: Murray By-election 14th October 2017 ballot paper	27
Appendix D: Election Service Charter 2017 - 2020	28

Appendix A: Murray By-election 14th October 2017 elector brochure

Bring this brochure with you on election day. It will make voting easier.

Legislative Assembly By-election
Saturday, 14 October 2017

Here's where to vote on election day*

For accessibility information visit www.elections.nsw.gov.au or call 1300 135 736

Venue	Address
Bakeland Central School	We Street Bakeland
Barham Community Centre	Riverside Court Barham
Barooga Community Hall	59 Banker Street Barooga
Beelbangers Public School	765 Rankins Springs Road Beelbangers
Berrigan Public School	25-29 Morakong Street Berrigan
Blighty Public School	Blighty School Road Blighty
Burratoona Public School	Fitzroy Street Burratoona
Burrongga Public School	Chapman Street Burrongga
Coleambally Central School	Kingfisher Avenue Coleambally
Dareton Public School	Matong Street Dareton
Deniliquin Dental Clinic	2 Macaulay Street Deniliquin
Deniliquin High School	Harfeur Street Deniliquin
Deniliquin North Public School	Victoria Street Deniliquin
Edward Public School	Butler Street Deniliquin
Easton Public School	Murray Terrace Easton
Finley High School	Tocumwal Street Finley
Gol Gol Public School	William Street Gol Gol
Goolgowlai Public School	Penny Street Goolgowlai
Gralee School	Yanco Avenue Leeton
Griffith North Public School	Boonah Street Griffith
Griffith PCYC	5 Olympic Street Griffith
Griffith Public School	Coolah Street Griffith
Harwood Public School	School Street Harwood
Hay Water Memorial High School	Morgan Street Hay
Hillston Central School	62-60 Moore Street Hillston
Koraleigh Public Hall	Eagles Lane Koraleigh
Lake Wyangan Public School	Boorga Road Lake Wyangan
Leeton Public School	Mallee Street Leeton
Madonna Place Hall	Wade Avenue Leeton
Moama Public School	Simms Street Moama
Moulamen Public School	Drougham Street Moulamen
Murrumbidgee Community Hall	189 Nettie Avenue Murrumbidgee
Murray Downs Fire Station - Hall	Murray Downs Drive Murray Downs
Murray Shire Hall	21-25 Conargo Street Mathoura
Murrumbidgee Shire Council	21 Carrington Street Darlington Point
Parkview Public School	Park Avenue Leeton
Rankins Springs Public School	13-23 Boree Street Rankins Springs
Tocumwal Public School	Monte Street Tocumwal
Tooleybuc Central School	Murray Street Tooleybuc
Wade High School	Pease Street Griffin
Wakool Burrabool Public School	49 Flinders Street Wakool
Wamboon Public School	Oxley Road Wamboon
Wentworth Public School	Darling Street Wentworth
Whitton Public School	Meibergen Street Whitton
Yanco Memorial Hall	7 Main Ave Yanco
Yenda Public School	Curran Road Yenda
Yoogali Public School	East Street Yoogali

*Information correct as at 27 September 2017.

Your guide to voting in
Murray

YOUR STATE. YOUR LIFE. YOUR VOTE.

Murray
State By-election
Saturday, 14 October 2017

This brochure contains important information about the election. It's particularly important to remember:

- Polling places will be open from 8am to 6pm on Saturday, 14 October 2017;
- Voting is compulsory for all enrolled electors in the electoral district of Murray; and
- The penalty for not voting at the by-election is \$55.

Do I need to vote?

You have received this brochure because you are enrolled in the Legislative Assembly District of Murray. Voting is compulsory for all enrolled electors.

Who am I voting for?

You will vote to elect a candidate to represent the electorate of Murray in the NSW Legislative Assembly. The full list of candidates is available at www.elections.nsw.gov.au or by calling us.

Where can I vote?

On election day you can vote at the polling places listed in this brochure. Visit the NSWEC website for more details.

Making political donations to a candidate or political party

Did you know that if you make a political donation to a candidate or political party of \$1,000 or more you must report it to the NSW Electoral Commission at the end of the financial year? For more information visit www.elections.nsw.gov.au/Murray/donors

What if I can't get to a polling place on election day?

If you can't vote on election day you can vote early.

Pre-poll voting

Pre-poll voting is available at the following locations:

Venue	Address	Opening times
Deniliquin Pre-Poll	Multi-Arts Centre, 58 Cressy Street, Deniliquin NSW 2710	7 - 13 October 2017 Mon - Fri: 8:30am - 5:00pm Sat: 9:00am - 5:00pm Closed on Sun
Griffith Aboriginal Medical Centre	38-42 Jondaryan Avenue, Griffith NSW 2680	13 October 2017 Fri: 8:30am - 5:00pm
Leeton Shire Council Administration Building	23-25 Chelmsford Place, Leeton NSW 2705	7 - 13 October 2017 Mon - Fri: 8:30am - 5:00pm Sat: 9:00am - 5:00pm Closed on Sun
Murray Returning Officer's Office	2nd Floor, 130-140 Banna Avenue, Griffith NSW 2680	2 - 13 October 2017 Mon - Fri: 8:00am - 6:00pm Thu (12 Oct): 8:00am - 8:00pm Sat: 9:00am - 5:00pm Closed on Sun
Murray River Council Office - Moama	6 Meninya Street, Moama NSW 2731	9 - 13 October 2017 Mon - Fri: 9:00am - 5:00pm Closed on Sat, Sun
Sydney Pre-poll	Level 25, 201 Kent Street, Sydney NSW 2000	3 - 13 October 2017 Mon - Fri: 8:30am - 5:00pm
Wentworth Council - Community Meeting Room	26-28 Adelaide Street, Wentworth NSW 2648	11 - 13 October 2017 Wed - Fri: 8:30am - 5:00pm

Vote via internet or telephone

People who are blind, vision impaired or who have another disability, live more than 20kms from the nearest polling place, or who will be outside NSW on election day, can apply to use the iVote® system to vote via the internet or the telephone.

To register visit iVote.nsw.gov.au or call 1300 2 iVote (1300 24 86 83) or from outside Australia call +612 9290 5287. Registrations close at 1pm EST on Saturday, 14 October.

Vote by post

Postal voting is also available for eligible voters. You can apply online at www.elections.nsw.gov.au. You can obtain an application form online, from the Returning Officer or by calling us.

Applications must be received by the returning officer by 6.00pm Wednesday, 11 October 2017 if sent within Australia, or 6.00pm Monday, 9 October 2017 if sent from overseas. Electors who are general postal voters will automatically be sent their ballot papers without further application.

Can I get assistance in any other language?

For assistance in a language other than English please call 13 14 50.

العربية	Italiano	Bahasa Indonesia	Polski
العربية	日本語	Tiếng Việt	한국어
Tagalog	Русский	Türkçe	हिंदी
中文	Português	Македонски	Hrvatski
हिन्दी	فارسی	فارسی	Español
Ελληνικά	Српски	Ἑλληνικά	bi-Mati

For more information:
www.elections.nsw.gov.au or call 1300 135 736.
For hearing and speech impaired enquiries,
call us via the National Relay Service on 13 36 77.

Appendix B: Murray By-election 14th October 2017 polling places

Pre-poll voting venues

Venue	Address	Suburb	Accessibility
Deniliquin Pre-Poll	Multi-Arts Centre, 58 Cressy Street	Deniliquin NSW 2710	Assisted access
Leeton Pre-Poll	23-25 Chelmsford Place	Leeton NSW 2705	Assisted access
Moama Pre-Poll	6 Meninya Street	Moama NSW 2731	Fully accessible
Sydney Pre-poll	Level 25, 201 Kent Street	Sydney NSW 2000	Assisted access
Wentworth Pre-Poll	26-28 Adelaide Street	Wentworth NSW 2648	Fully accessible
Wiradjuri Early Voting Cntr	38-42 Jondaryan Avenue	Griffith NSW 2680	Fully accessible

Declared Institutions

Venue	Address	Suburb	Accessibility
Alf Herrmann Lodge	71-89 Karri Road	Leeton NSW 2705	N/A
Assumption Villa	84 Brobenah Road	Leeton NSW 2705	N/A
Balranald MPS	41-43 Court Street	Balranald NSW 2715	N/A
Balranald Retirement Hostel	24 Mayall Street	Balranald NSW 2715	N/A
Berrigan Aged Care Hostel	51-53 Davis Street	Berrigan NSW 2712	N/A
Berrigan district Health Service	47-49 Davis St	Berrigan NSW 2712	N/A
Berrigan Health Service	47-49 Davis Street	Berrigan NSW 2713	N/A
Finley Hospital	Dawe Avenue	Finley NSW 2713	N/A
Griffith Base Hospital	Noorebar Avenue	Griffith NSW 2680	N/A
Leeton Hospital	Wade Avenue	Leeton NSW 2705	N/A
Navorina Nursing Home	5-9 Macauley Street	Deniliquin NSW 2710	N/A
Southern Cross Apartments Moama	82 Regent Street	Moama NSW 2731	N/A
The Pioneers Lodge Hostel & Nursing Home	15-23 Sidlow Road	Griffith NSW 2680	N/A
Tocumwal Hospital	Adams Street	Tocumwal NSW 2715	N/A

Voting venues

Venue	Address	Suburb	Accessibility
Balranald School	We Street	Balranald NSW 2715	Assisted access
Barham Reception Room	Riverside Court	Barham NSW 2732	Fully accessible
Barooga Hall	59 Banker Street	Barooga NSW 3644	Assisted access
Beelbangera Public	765 Rankins Springs Road	Beelbangera NSW 2680	Assisted access
Berrigan Public	25-29 Momalong Street	Berrigan NSW 2712	Fully accessible
Blighty Public	Blighty School Road	Blighty NSW 2713	Assisted access
Bunnaloo Public	Fitzroy Street	Bunnaloo NSW 2731	Assisted access

Venue	Address	Suburb	Accessibility
Buronga Public	Chapman Street	Buronga NSW 2739	Assisted access
Coleambally School	Kingfisher Avenue	Coleambally NSW 2707	Assisted access
Dareton Public	Matong Street	Dareton NSW 2717	Assisted access
Deniliquin Dental Clinic	2 Macauley Street	Deniliquin NSW 2710	Fully accessible
Deniliquin High	Harfleur Street	Deniliquin NSW 2710	Assisted access
Deniliquin Nth Public	Victoria Street	Deniliquin NSW 2710	No wheelchair access
Edward Public	Butler Street	Deniliquin NSW 2710	Assisted access
Euston Public	Murray Terrace	Euston NSW 2737	Assisted access
Finley High	Tocumwal Street	Finley NSW 2713	Assisted access
Gol Gol Public	William Street	Gol Gol NSW 2738	Assisted access
Goolgowi Public	Penney Street	Goolgowi NSW 2652	Assisted access
Gralee School	Yanco Avenue	Leeton NSW 2705	Assisted access
Griffith Nth Public	Boonah Street	Griffith NSW 2680	Assisted access
Griffith PCYC	5 Olympic Street	Griffith NSW 2680	Assisted access
Griffith Public	Coolah Street	Griffith NSW 2680	Assisted access
Hanwood Public	School Street	Hanwood NSW 2680	Fully accessible
Hay High	Morgan Street	Hay NSW 2711	Fully accessible
Hillston School	62-80 Moore Street	Hillston NSW 2675	Assisted access
Koraleigh Hall	Eagles Lane	Koraleigh NSW 2735	No wheelchair access
Lake Wyangan Public	Boorga Road	Lake Wyangan NSW 2680	Assisted access
Leeton Public	Mallee Street	Leeton NSW 2705	Assisted access
Madonna PI Hall	Wade Avenue	Leeton NSW 2705	Assisted access
Mathoura Hall	21-25 Conargo Street	Mathoura NSW 2710	Assisted access
Moama Public	Simms Street	Moama NSW 2731	Assisted access
Moulamein Public	Brougham Street	Moulamein NSW 2733	Assisted access
Murrami Hall	189 Wattle Avenue	Murrami NSW 2705	Assisted access
Murray Downs RFS	Murray Downs Drive	Murray Downs NSW 2734	Assisted access
Murrumbidgee Council Chambers	21 Carrington Street	Darlington Point NSW 2706	Assisted access
Parkview Public	Park Avenue	Leeton NSW 2705	Assisted access
Rankins Springs Public	13-23 Boree Street	Rankins Springs NSW 2669	No wheelchair access
Tocumwal Public	Morris Street	Tocumwal NSW 2714	No wheelchair access
Tooleybuc School	Murray Street	Tooleybuc NSW 2736	No wheelchair access
Wade High	Poole Street	Griffith NSW 2680	Assisted access
Wakool Public	49 Flinders Street	Wakool NSW 2710	Assisted access
Wamoon Public	Oxley Road	Wamoon NSW 2705	Assisted access

Venue	Address	Suburb	Accessibility
Wentworth Public	Darling Street	Wentworth NSW 2648	Assisted access
Whitton Public	Melbergen Street	Whitton NSW 2705	No wheelchair access
Yanco Hall	7 Main Ave	Yanco NSW 2703	Assisted access
Yenda Public	Curran Road	Yenda NSW 2681	Assisted access
Yoogali Public	East Street	Yoogali NSW 2680	Assisted access
Deniliquin Pre-Poll	Multi-Arts Centre, 58 Cressy Street	Deniliquin NSW 2710	Assisted access
Leeton Pre-Poll	23-25 Chelmsford Place	Leeton NSW 2705	Assisted access
Moama Pre-Poll	6 Meninya Street	Moama NSW 2731	Assisted access
Sydney Pre-poll	Level 25, 201 Kent Street	Sydney NSW 2000	Assisted access
Wentworth Pre-Poll	26-28 Adelaide Street	Wentworth NSW 2648	Assisted access
Wiradjuri Early Voting Cntr	38-42 Jondaryan Avenue	Griffith NSW 2680	Assisted access

Appendix C: Murray By-election 14th October 2017 ballot paper

Ballot Paper
Legislative Assembly Election – Electoral District of
Murray
Held on 14 October 2017

DIRECTIONS FOR VOTING
PLEASE READ CAREFULLY

- Write the number **1** in the square next to the candidate of your choice.
- You can show more choices, if you want to, by writing numbers in the other squares, starting with the number **2**.
- Fold this ballot paper so your vote cannot be seen and place it in the ballot box (or in the envelope provided).

CANDIDATES

MILLS Brian
INDEPENDENT

ROBINSON Peter
INDEPENDENT


EVANS Austin
THE NATIONALS

DALTON Helen
SHOOTERS, FISHERS AND FARMERS

KIDD Michael
COUNTRY LABOR

GOODLASS Ray
THE GREENS

You must not take a ballot paper out of the polling place



Appendix D: Election Service Charter 2017 - 2020



Election Service Charter 2017 - 2020

GOALS	TO BE ACHIEVED BY:	SUCCESS MEASURED BY:
Foster participation in the democratic process	<ul style="list-style-type: none"> • Conducting impartial and fair elections in accordance with the law • Providing services and information to enable all election participants to participate fully including communities with historically lower participation rates • Communicating election information in ways that encourage awareness and engagement • Supporting events and activities that encourage participation in democracy 	<ul style="list-style-type: none"> • Election participants report conduct of election as impartial and fair and without barriers to participation • Election participation equals or exceeds prior election levels • Formality rates equal or exceed prior election levels • There are no Court challenges to declared results
Provide seamless service delivery	<ul style="list-style-type: none"> • Providing comprehensive services including: <ul style="list-style-type: none"> – information services – enrolment services – voting options including pre-poll and technology enabled voting – location and accessibility of polling places – services to assist those with particular needs – responsibilities and entitlements of candidates, groups and political parties including funding and disclosure requirements • Providing efficient services to meet needs of participants according to legislative mandate • Providing election services in timely, efficient and professional manner 	<ul style="list-style-type: none"> • Stakeholders feel well informed about election events • Election participants report satisfaction with the NSWEC's electoral services
Be customer focussed and commercially minded	<ul style="list-style-type: none"> • Understanding the needs of our stakeholders and users of our election services through liaison, consultation and structured feedback • Delivering well organised, reliable and quality elections • Ensuring elections are provided on a competitive basis 	<ul style="list-style-type: none"> • Participants report satisfaction with NSWEC's services and election staff • Those entities using the NSWEC to conduct elections report satisfaction with services provided and see these are representing value • Costs of providing elections are recovered • The NSWEC actively seeks feedback on its services
Be innovative and fast adaptors	<ul style="list-style-type: none"> • Utilising new technologies to increase convenience for those participating in elections within the legislative mandate while maintaining integrity of the election and security of information • Review developments in election services and funding and disclosure across Australia and internationally for possible application to NSW 	<ul style="list-style-type: none"> • The NSWEC is seen as seeking to adapt its services, within legislative requirements, to meet participants' needs • The NSWEC advises Government of innovations that will strengthen the democratic system and improve administration of elections

PM_2019_APR18