

Wagga Wagga State by-election

8 September 2018

Report on the conduct of the election

Large decorative curved shapes in blue and grey on the right side of the page.

Erratum

This report replaces the version published in March 2018. We had incorrectly shown the date of return of the writ as Thursday, 18 October 2018. This has been corrected to Monday, 17 September 2018.

The NSW Electoral Commission

Address: Level 25, 201 Kent Street, Sydney NSW
2000 Australia
Postal: GPO Box 832, Sydney NSW 2001
Australia
Telephone: +61 2 9290 5999
Fax: +61 2 9290 5991
Website: elections.nsw.gov.au
Office hours: Monday-Friday, 9am-5pm

Copyright © State of New South Wales through the NSW
Electoral Commission, 2019.

No part of this report may be reproduced by any process,
except in accordance with the *Copyright Act 1968*. Please
address all enquiries to the NSW Electoral Commission.

The Hon. Gladys Berejiklian MP
Premier
52 Martin Place
SYDNEY NSW 2000

Dear Premier

I am pleased to submit my report on the
conduct of the State by-election held on
Saturday, 8 September 2018 for the
Legislative Assembly district of Wagga Wagga.

Yours sincerely



John Schmidt
Electoral Commissioner
26 March 2019

Contents

Foreword.....	0
Overview	1
By-election outcome.....	1
Candidates standing for election	1
Cost data	1
By-election summary	2
By-election key dates.....	3
Wagga Wagga electoral district.....	0
Wagga Wagga district profile.....	0
Area.....	1
Postcodes.....	1
Localities	1
Demographic profile	1
Historical electoral representation.....	2
Services to electors	2
Advertising	2
Elector brochure	2
Media liaison.....	3
NSW Electoral Commission website	3
Election reminder service	3
Service standards.....	3
Culturally and linguistically diverse electors.....	3
Electors with disabilities and access to polling places.....	4
Arrangements for voting before election day	4
Postal voting.....	4
Technology-assisted voting.....	4
Pre-poll voting.....	5
Polling places.....	5
Declared institutions.....	5
Services to candidates and registered political parties	6
Nominations.....	6
Registrations	6
Electoral material.....	6
Conducting the Wagga Wagga by-election.....	7
Returning officer arrangements	7
Election costs	7
Logistical and other support	7
Staffing	7
Supplies	8
Waste management.....	8
IT support.....	8
Results.....	9
Enforcement of compulsory voting	10
Failure to vote	10
Compliance operation – Wagga Wagga State by-election	11
Overview and objectives.....	11
Execution.....	12
Comparison to 2015 State election and other by-elections.....	12
Appendices.....	13

Appendix A: Wagga Wagga by-election 8 September 2018 elector brochure	14
Appendix B: NSW Electoral Commission election service charter 2017-2020	15
Appendix C: Wagga Wagga by-election 8 September 2018 polling places	16
Appendix D: Wagga Wagga by-election 8 September 2018 ballot paper	18

List of Tables

Table 1: First preference votes for the Wagga Wagga by-election held 8 September 2018.....	9
Table 2: Potential offences under the Electoral Funding Act 2018	11
Table 3: Potential offences under the PEE Act	11

Foreword

This report provides information on the conduct of the by-election held for the Wagga Wagga electoral district on 8 September 2018 following the resignation of Daryl Maguire.

The writ for the Wagga Wagga by-election was issued on Friday, 17 August 2018, giving the NSW Electoral Commission three weeks to prepare the by-election.

The conduct of the election proceeded smoothly. Elector turnout and informality rates for the Wagga Wagga by-election were 88.34 per cent and 3.2 per cent, respectively.

The NSW Electoral Commission provided the first preference count on election night and declared the poll on 15 September 2018, seven days after the election. This was within the range for declaration of the poll for previous State by-elections.

Pursuant to transitional provisions in the *Electoral Act 2017*, this by-election was conducted under the provisions of the *Parliamentary Electorates and Elections Act 1912*.

The delivery of efficient, accurate and trusted elections, in accordance with NSW electoral legislation, relies heavily upon the capability of NSW Electoral Commission staff. I would like to take this opportunity to record my thanks to these staff and the NSW Electoral Commission's suppliers and contractors for their contribution and commitment to the successful conduct of the Wagga Wagga by-election.

Overview

By-election outcome

The candidate elected at the Wagga Wagga by-election on 8 September 2018 was Joe McGirr (Independent) with 12,003 votes, 25.42 per cent of first preference votes.

Candidates standing for election

Candidate Name	Party Affiliation
Seb MCDONAGH	Shooters, Fishers and Farmers
Julia HAM	Liberal
Joe McGIRR	Independent
Ray GOODLASS	The Greens
Tom ARENTZ	Christian Democratic Party
Paul FUNNELL	Independent
Dan HAYES	Country Labor

Cost data

Cost of by-election	\$1,096,222
Cost per elector	\$19.85

By-election summary

Enrolment	
Total electors	55,220
Voting venues	
Pre-poll venues	3
Polling places (including pre-poll and declared institutions)	29
Staff employed for election	134
Voter turnout	
Formal votes	47,218
Informal votes	1,561
Total votes	48,779
Voter turnout rate	88.34%
Formality rate	96.8%
Non-voting penalty notices issued	5,386 ¹
Penalty notices issued as % of roll	9.75%
Voting options used by electors	
Ordinary	28,643
iVote	2,666
Postal	1,600
Pre-poll	14,979
Declared institution	363
Enrol and vote	441
Provisional/silent	77
Absent	10
Candidates	
Total candidates	7

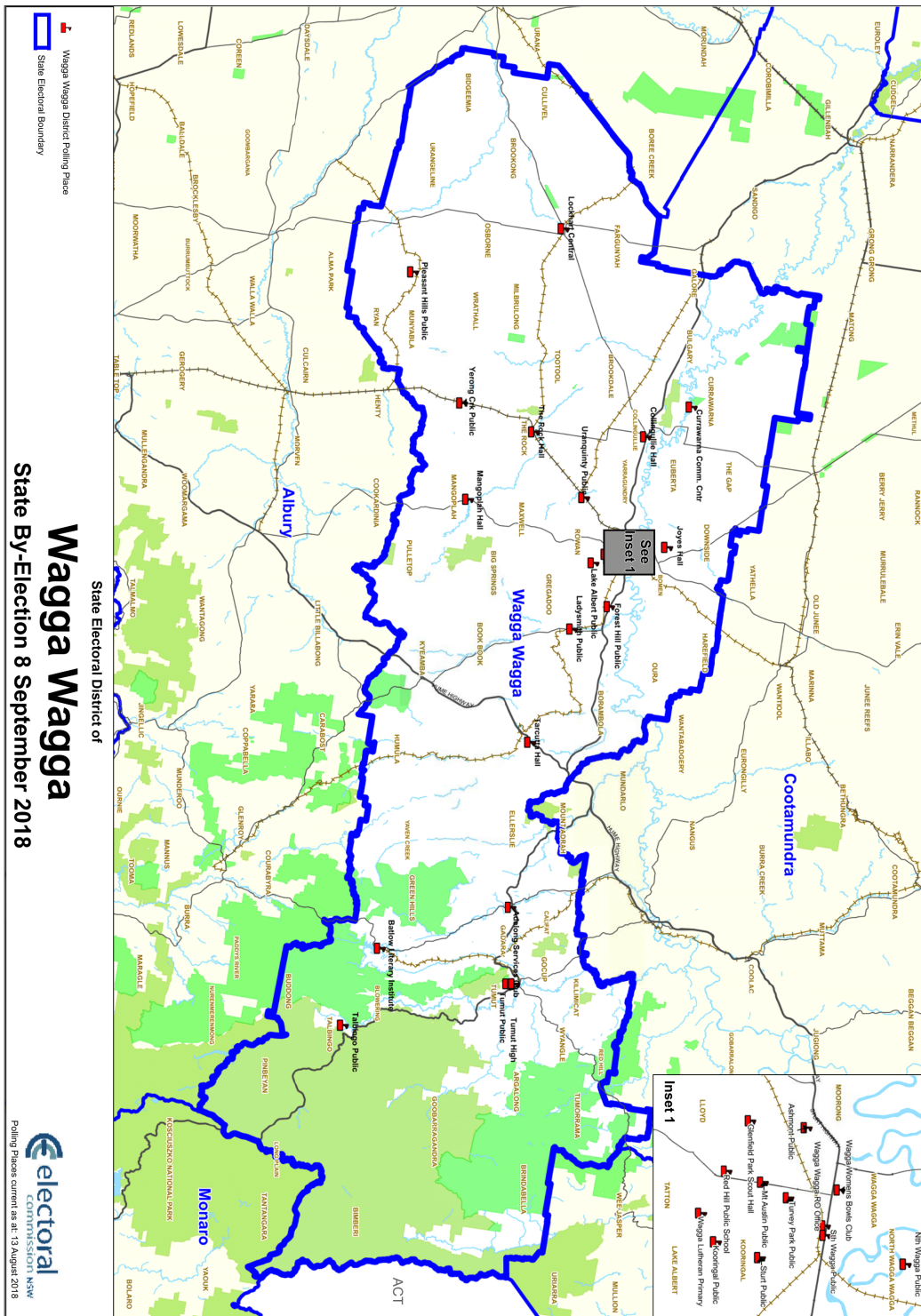
¹ A penalty notice is withdrawn if an elector provides a valid excuse for not voting. At the date of this report the enforcement process for failure-to-vote penalty notices for this by-election had not yet been completed.

By-election key dates

Date	Matter
Monday, 6 August 2018	Candidate and third-party campaigner registration opened
Friday, 17 August 2018	Issue of writ
Friday, 17 August 2018	Commencement of capped expenditure period
Friday, 17 August 2018	Close of rolls (6pm)
Friday, 17 August 2018	Candidate nominations opened
Monday, 20 August 2018	iVote registration opened (10am)
Wednesday, 22 August 2018	Close of party nominations at NSW Electoral Commission head office (12pm)
Thursday, 23 August 2018	Close of nominations at RO office (12pm)
Thursday, 23 August 2018	Candidate registrations closed (12pm)
Thursday, 23 August 2018	Ballot paper draw (2pm)
Thursday, 23 August 2018	Registration of electoral materials commenced
Monday, 27 August 2018	Pre-poll voting opened (8am-6pm)
Monday, 27 August 2018	iVote voting opened (8am)
Friday, 31 August 2018	Registration of electoral material closed (5pm)
Friday, 31 August 2018	Registration of third-party campaigners closed (5pm)
Monday, 3 September 2018	Declared institution voting started
Monday, 3 September 2018	Postal vote application (outside Australia) closed (6pm)
Wednesday, 5 September 2018	Postal vote application (within Australia) closed (6pm)
Friday, 7 September 2018	Pre-poll voting closed (6pm)
Friday, 7 September 2018	Declared institution voting ended
Saturday, 8 September 2018	Election day (8am - 6pm)
Saturday, 8 September 2018	End of capped expenditure period
Saturday, 8 September 2018	iVote registration closed (1pm)
Saturday, 8 September 2018	iVote voting closed (6pm)
Wednesday, 12 September 2018	Receipt of postal votes declarations closed (6pm)
Thursday, 18 October 2018	Writ returned
Friday, 19 October 2018	Last day for return of writ

Wagga Wagga electoral district

Wagga Wagga district profile



The State electoral district of Wagga Wagga covers all of the local government areas of Lockhart Shire, Tumut Shire and City of Wagga Wagga Councils.

Area

12,108.11 square kilometres

Postcodes

2611, 2642, 2645, 2649, 2650, 2651, 2652, 2655, 2656, 2658, 2659, 2661, 2678, 2702, 2720, 2722, 2729, 2730

Localities

Adelong, Alfredtown, Alma Park, Argalong, Ashmont, Bangadang, Batlow, Belfrayden, Big Springs, Black Creek, Blowering, Bombowlee, Bomen, Book Book, Boorooma, Borambola, Boree Creek, Bourkelands, Brindabella, Brookdale, Brookong, Brucedale, Brungle, Brungle Creek, Bulgary, Burrandana, Califat, Cartwrights Hill, Charles Sturt University, Collingullie, Cooleys Creek, Couragago, Cullivel, Currawarna, Darlow, Downside, East Wagga Wagga, Ellerslie, Estella, Euberta, Eunanoreenya, Fargunyah, Forest Hill, French Park, Gadara, Galore, Ganmain, Gelston Park, Gilmore, Glenfield Park, Gobbagombalin, Gocup, Goobarragandra, Grahamstown, Green Hills, Gregadoo, Gumly Gumly, Harefield, Henty, Hillgrove, Humula, Jones Bridge, Kapooka, Killimicat, Koorngal, Kunama, Kyeamba, Lacmalac, Ladysmith, Lake Albert, Laurel Hill, Little River, Lloyd, Lockhart, Lower Bago, Mangoplah, Marrar, Matong, Maxwell, Milbrulong, Minjary, Moorong, Mount Adrah, Mount Austin, Mount Horeb, Mundongo, North Wagga Wagga, Oberne Creek, Osborne, Oura, Pleasant Hills, Pulletop, Rand, Rowan, Ryan, San Isidore, Sandy Gully, Sharps Creek, Springvale, Talbingo, Tarcutta, Tatton, The Gap, The Rock, Tolland, Tootool, Tumorrana, Tumut, Tumut Plains, Turvey Park, Urana, Urangeline East, Uranquinty, Wagga Wagga, Walbundrie, Wallacetown, Wreboldera, Wermatong, Westwood, Windowie, Wondalga, Wyangle, Yarragundry, Yaven Creek, Yerong Creek.

Demographic profile

The 2016 census² revealed that Wagga Wagga had 76,536 residents of whom 50.9 per cent were female (38,972) and 49.1 per cent were male (37,562). Indigenous Australians made up 5.4 per cent (4,102) of the population.

The median age was 37 years, which is below the overall average for Australia of 38. Approximately 12,618 of the population was aged 65 or over (16.6 per cent) and 26.9 per cent were aged under 20.

Almost 33,342 (83.8 per cent) residents were born in Australia. The most frequent countries of birth after Australia were England (1.3 per cent), India (0.9 per cent), New Zealand (0.8 per cent), and the Philippines (0.6 per cent).

Throughout the electorate 87.8 per cent of people speak only English at home. Other languages spoken at home included:

- Malayalam (0.5 per cent)
- Mandarin (0.4 per cent)
- Arabic (0.4 per cent)

²

http://quickstats.censusdata.abs.gov.au/census_services/getproduct/census/2016/quickstat/SED10087?open=document

- Tagalog (0.3 per cent)
- Filipino (0.2 per cent)

Historical electoral representation

Previous recent State representation for the Wagga Wagga district has been:

Date	Name	Party
1999-2018	Daryl William MAGUIRE	Liberal Party
1975-1999	Joseph John SCHIPP	Liberal Party
1957-1975	Wallace Clyde FIFE	Liberal Party

Services to electors

The NSW Electoral Commission undertook an advertising and communication campaign to raise awareness of the Wagga Wagga by-election and provide necessary information to electors and candidates.

The major aspects of this strategy involved:

- paid advertisements
- an elector brochure sent to each enrolled elector
- active social media posting and moderation (Facebook, Twitter, Instagram) and
- media liaison.

All communications activity directed people to the NSW Electoral Commission website, which provided further detailed information about the election.

Advertising

The *Parliamentary Electorates and Elections Act 1912* (PEE Act) prescribed that certain advertising must occur. The advertising strategy for the Wagga Wagga by-election involved placing newspaper advertisements in state-wide and local newspapers supporting the following phases of the election:

- Issue of writ / nominations information
- Early voting options – including pre-poll, postal, iVote and register electoral material
- Remember to vote – including a list of candidates.

Paid advertisements comprised print, boosted Facebook posts and digital display. Digital display advertisements were placed to target eligible iVote users who were interstate or overseas.

Elector brochure

All enrolled electors were sent a personalised elector brochure to their nominated mailing address. The brochure contained information about the by-election including early voting options and a list of polling places. 55,250 brochures were distributed to electors. See Appendix A for brochure artwork.

Media liaison

Targeted media releases supported the various phases of the election. The media officer provided live and pre-recorded radio interviews as required and answered media enquiries to assist the media cover the elections.

NSW Electoral Commission website

The NSW Electoral Commission's website (elections.nsw.gov.au) provided a range of information concerning participation in the by-election, including the election timetable, employment opportunities, enrolment, polling places, candidate requirements, names of candidates and poll results.

Use of the NSW Electoral Commission's website is typically greatest on election night when users seek information on results. On election night, the Wagga Wagga by-election results page had 12,293 unique views.

Election reminder service

This reminder service enables electors to register with the NSW Electoral Commission to be kept notified, by SMS message, email, or both, of impending elections and be sent one or more reminders to vote.

For the Wagga Wagga by-election, the total number of email reminders sent was 1,795. There were 1,720 SMS reminders.

Service standards

The NSW Electoral Commission seeks to meet the expectations of electors about its electoral services and to this end has developed a Service Charter which outlines the NSW Electoral Commission's election service standards. The 2017-2020 NSW Electoral Commission Election Service Charter was the overall service standard for this by-election. In short, the NSW Electoral Commission undertakes to:

- foster participation in the democratic process
- provide seamless service delivery
- be customer focussed and commercially minded
- be innovative and fast adaptors

The Service Charter can be found at Appendix B.

Culturally and linguistically diverse electors

The Wagga Wagga district is not considered to be a high culturally and linguistically diverse (CALD) district. Nevertheless, all electors had access to interpreters via the Translating and Interpreting

Service. This service was promoted in the online training for polling place managers and election officials.

Electors with disabilities and access to polling places

Securing appropriate premises for polling places can be difficult. The NSW Electoral Commission does not own facilities within electoral districts. The pool of available rental premises is limited by the short-term nature of the lease and the NSW Electoral Commission's space, accessibility, location and workplace health and safety requirements.

As far as practically possible, the NSW Electoral Commission aimed to provide accessible and appropriately sited polling places for the Wagga Wagga by-election. Detailed information was provided to assist electors with mobility issues or other disabilities to locate the most suitable polling place. This access information was provided on the NSW Electoral Commission's website, in the elector brochure and by NSW Electoral Commission staff.

Arrangements for voting before election day

Electors who were unable to vote on election day had the opportunity to vote early using iVote, postal or pre-poll voting (including voting in declared institutions).

A total of 21,608 electors voted early, representing almost half of total votes cast. This volume is in line with a general trend of early voting across NSW and other Australian jurisdictions.

Postal voting

Electors who were unable to attend a polling place on election day were able to apply for a postal vote. Postal vote application forms were available from the Returning Officer and the NSW Electoral Commission's website.

Of 2,428 postal votes issued, 1,596 were accepted, 201 rejected and 631 not scrutinised because they were either returned too late or not returned at all.

Technology-assisted voting

The PEE Act provides for technology-assisted voting to be used in Parliamentary by-elections.

Both online and telephone voting (iVote) were provided for the Wagga Wagga by-election, with online voting being the preferred option for electors who use iVote. Electors were eligible to use iVote if they:

- had a visual impairment
- had a disability
- had their place of living 20 kilometres or more from a polling place or
- were outside NSW on election day.

There were 2,666 iVotes cast (5.47 per cent of total votes).

Pre-poll voting

Pre-poll voting was open to electors at the returning officer's office and the NSW Electoral Commission's office in the Sydney CBD. The pre-poll locations were listed in the elector brochure and on the NSW Electoral Commission website.

Pre-polling for electors who were overseas or interstate was provided via postal voting and iVote.

Pre-poll returning officer's office

Wagga Wagga RO Office, 97 Edward Street, Wagga Wagga NSW 2650

Monday, 27 August – Friday, 7 September 2018

Monday – Friday 8am – 6pm

Thursday, 6 April 8am – 8pm

Saturday, 9am – 5pm

Closed on Sunday

Pre-poll NSW Electoral Commission head office

Level 25, 201 Kent Street Sydney

Monday, 27 August – Friday, 7 September 2018

Monday - Friday: 9am – 5pm

Closed Saturday and Sunday.

Polling places

As noted earlier, securing appropriate premises for polling places and the returning officer's office can be difficult. The pool of available rental premises is limited by the short-term nature of the lease and the NSW Electoral Commission's space, accessibility, location and workplace health and safety requirements. A list of the polling places used for this by-election are in Appendix C.

Declared institutions

The PEE Act allows the Electoral Commissioner to appoint hospitals, convalescent homes or similar institutions as places at which residents or inpatients of those institutions can cast their votes before election day.

In the conduct of the Wagga Wagga by-election, 14 venues were designated as declared institutions. Election staff visited these declared institutions between Monday, 3 September 2018 and Friday, 7 September 2018.

Services to candidates and registered political parties

Nominations

Nomination forms were available from the NSW Electoral Commission website and could be lodged after the issue of the writ (Friday, 17 August 2018). The writ set Wednesday, 22 August 2018 as the date for close of nominations for political parties lodging forms with the NSW Electoral Commission's head office and Thursday, 23 August 2018 for candidates lodging forms with the returning officer.

Registered officers (or deputy registered officers) of registered political parties could nominate candidates at the NSW Electoral Commission's office in the city or at the returning officer's office in Wagga Wagga. Independent candidates could only nominate at the returning officer's office.

There were seven candidates. Following the close of nominations the returning officer conducted a draw to determine the order of candidates on the ballot paper.

Registrations

Candidates and third-party campaigners were required to be registered for the by-election.

Candidates who intended receiving political donations or incurring electoral communication expenditure before nominating were required to register and appoint an official agent. Candidates who did not previously register were deemed to be registered from nomination day.

Third-party campaigners were required to register before incurring \$2,000 in electoral communication expenditure during the capped State expenditure period.

Registration forms could be lodged with the NSW Electoral Commission from the issue of the writ (Friday, 17 August 2018). Candidates had until Thursday, 23 August 2018 to lodge a registration form, while registrations for third-party campaigners closed on Friday, 31 August 2018.

Eight candidates were registered for the by-election. No third-party campaigners applied to be registered for the by-election.

Electoral material

Registration of electoral material was handled centrally. Registration of this material opened on Thursday, 23 August 2018.

Close of applications to register electoral material was 5pm, Friday, 31 August 2018.

Conducting the Wagga Wagga by-election

Returning officer arrangements

The returning officer's office was situated at 97 Edward Street, Wagga Wagga NSW 2650.

Returning officer's duties include:

- set up and decommissioning of the (temporary) office;
- training of office staff and polling place managers;
- arranging voting at polling places and Declared Institutions;
- issuing and processing postal and pre-poll votes;
- dealing with enquiries from candidates and electors and other feedback;
- processing candidate nominations and electoral material; and
- counting votes and declaring the results of the election.

A returning officer support officer was appointed in the NSW Electoral Commission's head office to provide support on electoral matters and procedures.

Election costs

Key cost drivers for the election included:

- election officials wages;
- office accommodation for the returning officer;
- information and technology support;
- polling places;
- number of electors in the electorate;
- newspaper advertising; and
- printing/materials for polling places.

The final cost of NSW Electoral Commission conducting the election was \$1,096,222 (GST exclusive).

This was made up of election staffing \$341,646; venues \$42,213; logistics \$24,422; ballot papers and electoral rolls \$12,487; electronic voting \$531,810 and other miscellaneous items \$143,644. The cost per elector was \$19.85.

Logistical and other support

Staffing

The majority of casual election staff were employed to work on election day in polling places as polling place managers or election officials. In addition, casual staff were employed in the Returning Officer's office to recruit staff, pack and prepare materials for each polling place, operate pre-poll voting, visit declared institutions, count votes and pack materials after the election.

Recruitment of election staff took place via the NSW Electoral Commission on-line registration system. There was 136 people employed to work at the election. The election staff was made up of:

- 29 polling place managers,
- 7 deputy polling place managers,
- 13 declaration vote issuing officers,
- 86 election officials
- 1 returning officer.

Of the staff employed, two staff members identified as being Aboriginal (1.34%), two election staff members had a disability (1.34%) and three (2.0%) staff members spoke another language other than English.

All polling place staff must complete an online training program that is mapped to their job role. Polling place staff are also issued with an instruction manual to prepare them for election day.

Supplies

A total of 64,200 ballot papers were printed. A copy of the ballot paper is at Appendix D.

Waste management

The NSW Electoral Commission is covered by the NSW Government's waste management policy. In providing electoral services the NSW Electoral Commission seeks to use, wherever possible, paper and cardboard comprising recycled content and to ensure that the paper and cardboard materials are themselves recycled.

In the Wagga Wagga by-election, standard cardboard materials were used in polling places. These included voting screens, wheelchair screens, ballot boxes, caution signs and recycle bins. After the election, the materials were taken to the nearest council recycling facility.

IT support

For the Wagga Wagga by-election the Election Management Application was used. This is an internet-based application for the use of returning officers, office assistants and head office staff. It consists of a suite of software modules to assist with managing election processes such as enquiries, election day staffing, candidate nominations, the distribution and return of declaration votes, results and non-voter administration.

In addition, IT equipment is provided to the returning officer's office and polling places.

Results

On election night, the NSW Electoral Commission provides the result of counts conducted at each polling place for the first preference vote for each candidate, and the result of the notional count for the two candidates considered most likely to receive the greatest number of votes (the two candidate preferred vote). The results are shown on election night from 6.30pm and progressively updated.

On the day after polling day, all the ballot papers from every polling place are recounted to ensure the election night count is accurate (the check count). Declaration votes are added progressively with postal votes accepted up to 6pm on the Wednesday after election day. At this point, the final distribution of preferences is conducted.

Candidates' scrutineers are welcome to attend all counts.

Table 1: First preference votes for the Wagga Wagga by-election held 8 September 2018

Candidates	Votes	
Seb McDONAGH	4,682	
Julia HAM	12,031	
Joe McGIRR	12,003*	ELECTED
Ray GOODLASS	1,377	
Tom ARENTZ	900	
Paul FUNNELL	5,028	
Dan HAYES	11,197	
Total formal votes	47,218	
Total informal votes	1,561	
Total votes	48,779	
Absolute majority	23,610	

*The above figures are the first preference votes received by each candidate. After the distribution of preferences, Joe McGirr was determined as elected.

More detailed information on the counts is available on the NSW Electoral Commission's website www.elections.nsw.gov.au

Enforcement of compulsory voting

Failure to vote

Under electoral legislation, the Electoral Commissioner is required to issue 'Failure to Vote' notices to those electors whose names were not marked off the electoral roll as having voted or recorded as providing a valid excuse. The penalty for not voting in a State by-election is \$55.00. The funds generated from penalty notices are not retained by the NSW Electoral Commission but are paid into NSW Government consolidated revenue.

All electoral rolls marked at polling places or in the returning officer's office were scanned after election day to create a list of non-voters for the Wagga Wagga State by-election.

The number of electors who were issued with penalty notices was 5,386 (9.75 per cent of electors enrolled)³. The remainder of electors who did not vote had provided a valid excuse for not voting either prior to or immediately after election day.

Initial Apparent Failure to Vote notices for the Wagga Wagga State by-election were issued on 6 November 2018. Responses can be submitted either by mail, email, or through the NSW Electoral Commission online portal. The notice provides options to satisfy the matter by either:

- paying the penalty of \$55.00
- notifying us of the polling place in which they attended
- submitting a reason for failure to vote for review, and/or
- electing for the matter to be dealt with by a court.

If a person does not respond to the initial Apparent Failure to Vote notices by the due date (28 days from the issue of the notice), a reminder notice is issued, giving a further 28 days to deal with the matter.

If the elector's reason for failing to vote is not accepted, a Final Notice will be issued giving two options: paying the penalty of \$55.00 or electing for the matter to be dealt with by a court.

If no response to the reminder notice or final notice is received by the due date, the matters are referred to Revenue NSW for enforcement action.

To help electors avoid this penalty in future elections, the penalty notice advises non-voters of the availability of the NSW Electoral Commission's election reminder service.

³ A penalty notice is withdrawn if an elector provides a valid excuse for not voting. At the date of this report the enforcement process for failure-to-vote penalty notices for this by-election had not yet been completed.

Compliance operation – Wagga Wagga State by-election

Overview and objectives

The NSW Electoral Commission is responsible for ensuring compliance with and enforcement of the PEE Act and the *Electoral Funding Act 2018* (EF Act). The Funding, Disclosure and Compliance (FDC) Division administers the enforcement functions.

The by-election compliance operation provides an opportunity for the NSW Electoral Commission to further its objective of establishing a stronger regulatory function by:

- proactively engaging with stakeholders
- ensuring compliance with legislations
- promoting enforcement capabilities.

Table 2: Potential offences under the Electoral Funding Act 2018

Section	Offence	Penalty
s42 s145(1)	Third-party campaigner – failure to register and appoint an agent`	\$44,000 or 2 years imprisonment or both

Table 3: Potential offences under the PEE Act

Section	Offence	Penalty
s90(4)	Offences by scrutineers	\$1,100
s93(2)	Offences at polling place	\$550
s112(1)(d)	Multiple voting	\$11,000 or 3 years imprisonment
s113	Obstructing elector	\$55
s114(4)	Contravene direction of Returning Officer or polling place manager	\$550
s114U	Scrutineer offences	\$1,100 or 6 months imprisonment
s150	Treating	\$11,000 or 3 years imprisonment
s151	Intimidation	\$11,000 or 3 years imprisonment
s151A	Printing false information	Corporation: \$5,500 Individual: \$1,100 or 6 months imprisonment
s151B	Poster offences	\$330
s151E	Distribution of election material – name, address, author and printer details	\$1,100 or 6 months imprisonment
s151F	Distribution of electoral material on polling day	\$1,100 or 6 months imprisonment
s151H	Canvassing at polling place	\$550

Execution

The compliance operation took place from the opening of pre-poll on Monday, 27 August 2018 until election day. Eight investigators from FDC participated in the operation. In addition to their functions as inspectors under the EF Act, they were also appointed to the role of election assistant under the PEE Act so that they could exercise functions under that Act throughout the operation.

Investigators attended pre-polling venues for the opening and closing of pre-poll. On election day, investigators were in the field inspecting polling places and speaking with various stakeholders, including the returning officer, polling place managers, candidates and their campaigners or volunteers. The presence of the investigators served the dual purpose of educating stakeholders in their obligations under the PEE Act and the EF Act and acting as a deterrent to non-compliant behaviour.

In total 28 polling places in the Wagga Wagga district were visited on election day. No significant breaches were detected.

There were four complaints received regarding breaches of legislation for the Wagga Wagga district.

Comparison to 2015 State election and other by-elections

In the 2015 NSW State election there were six candidates for the Wagga Wagga district. The number of electors enrolled was 53,538, the voter turnout figure was 89.96 per cent and the informality rate was 3.21 per cent.

At the September 2018 by-election, there were seven candidates and the enrolment figure had increased to 55,220. The turnout and informality rates were 88.34 per cent and 3.2 per cent, respectively. Traditionally, turnout rates tend to be lower in by-elections than general elections and informality rates higher.

The turnout for the Wagga Wagga by-election was higher than the average for State by-elections over the past five years, (79.51 per cent), and the informality rate lower than the average across the same period of 3.60 per cent.

Appendices

Appendix A: Wagga Wagga by-election 8 September 2018 elector brochure	14
Appendix B: NSW Electoral Commission election service charter 2017-2020	15
Appendix C: Wagga Wagga by-election 8 September 2018 polling places	16
Appendix D: Wagga Wagga by-election 8 September 2018 ballot paper	18

Appendix A: Wagga Wagga by-election 8 September 2018 elector brochure

Bring this brochure with you on election day. It will make voting easier.


Here's where to vote on election day

Venue	Address
Adelong Services and Citizens Club	48-56 Tumut St, Adelong
Ashmont Public School	Ashmont Avenue, Ashmont
Batlow Literary Institute Hall	45 Pioneer St, Batlow
Collingullie Soldiers Memorial Hall	14 Urana St, Collingullie
Currawarna Community Centre	Bidgee St, Currawarna
Forest Hill Public School	Sturt Highway, Forest Hill
Glenfield Park Scout Hall	59 Dalman Parkway, Wagga Wagga
Joyes Hall – Charles Sturt University	Pugsley Place, North Wagga Wagga
Koorinal Public School	Lake Albert Rd, Koorinal
Ladysmith Public School	Ty Wong St, Ladysmith
Lake Albert Public School	Main St, Lake Albert
Lockhart Central School	Halliday St, Lockhart
Lutheran School Wagga Wagga	Tamar Drive, Talton
Mangoplah Community Hall	Kyeamba St, Mangoplah
Mount Austin Public School	McKell Ave, Mount Austin
North Wagga Public School	Hampden Ave, North Wagga Wagga
Pleasant Hills Public School	Crawford St, Pleasant Hills
Red Hill Public School	Hawkes Place, Tolland
South Wagga Public School	140 Edward St, Wagga Wagga
Sturt Public School	White Ave, Koorinal
Talbingo Public School	Lampe St, Talbingo
Tarcutta Memorial Hall	Sydney St, Tarcutta
The Rock Town Hall & Museum	140 Urana St, The Rock
Tumut High School	Bogong Place, Tumut
Tumut Public School	Simpson St, Tumut
Turvey Park Public School	31 Halloran St, Turvey Park
Uranquinty Public School	Pearson St, Uranquinty
Wagga Wagga Women's Bowling Club	Shaw St, Wagga Wagga
Yerong Creek Public School	Cole St, Yerong Creek

For accessibility information visit
www.elections.nsw.gov.au or call 1300 135 736


Information correct as at 20 August 2018.

Wagga Wagga State by-election
Saturday, 8 September 2018



Your guide to voting in
Wagga Wagga

YOUR STATE. YOUR LIFE. YOUR VOTE.



Wagga Wagga State by-election Saturday, 8 September 2018

This brochure contains important information about the election. Remember:

- Polling places will be open from 8am to 6pm on Saturday, 8 September 2018.
- You must vote in this election.
- The penalty for not voting at the by-election is \$55.

Do I need to vote?

You have received this brochure because you are enrolled in the Legislative Assembly District of Wagga Wagga. Voting is compulsory for all enrolled electors.

Who am I voting for?

You will vote to elect a candidate to represent the electorate of Wagga Wagga in the NSW Legislative Assembly. The full list of candidates is available at www.elections.nsw.gov.au or by calling us.

Where can I vote?

On election day you can vote at the polling places listed in this brochure. Visit www.elections.nsw.gov.au for more details.

Making political donations to a candidate or political party

If you make a political donation to a candidate or political party of \$1,000 or more you must report it to the NSW Electoral Commission at the end of the financial year. For more information visit www.elections.nsw.gov.au/wagga_wagga_electoral_participants

What if I can't get to a polling place on election day?

If you can't vote on election day, you can vote early in person at a pre-poll venue, or by internet, phone or post.

Pre-poll voting

You can vote early in person by pre-polling at one of these locations:

Venue	Address	Opening times
Wagga Wagga Returning Officer's Office	97 Edward St, Wagga Wagga NSW 2650	<ul style="list-style-type: none"> • Monday 27 August – Friday 31 August: 8am-6pm • Saturday 1 September: 9am-5pm • Monday 3 September – Wednesday 5 September: 8am-6pm • Thursday 6 September: 8am-8pm • Friday 7 September: 8am-6pm
Tumut Shire Council Administration Office	Riverina Highlands Building, 76 Capper St, Tumut NSW 2720	<ul style="list-style-type: none"> • Monday 3 September – Wednesday 5 September: 8am – 6pm • Thursday 6 September: 8am-5pm • Friday 7 September: 8am-6pm
Sydney Pre-poll	Level 25, 201 Kent St, Sydney NSW 2000	<ul style="list-style-type: none"> • Monday 27 August – Friday 31 August: 9am-5pm • Saturday 1 September: Closed • Monday 3 September – Friday 7 September: 9am-5pm

Vote via internet or telephone

People with disabilities, difficulty reading, who live more than 20kms from the nearest polling place, or who will be outside NSW on election day, can register to use the iVote system to vote via internet or telephone.

To register visit iVote.nsw.gov.au or call 1300 2 iVote (1300 24 86 83). From outside Australia, call +612 9290 5287. Registrations close at 1pm AEST on Saturday, 8 September 2018.

Vote by post

Postal voting is available for eligible voters. You can apply online at www.elections.nsw.gov.au. You can obtain an application form online, from the Returning Officer or by calling us.

Applications must be received by the Returning Officer by 6pm Wednesday, 5 September 2018 if sent within Australia, or 6pm Monday, 3 September 2018 if sent from overseas.

If you are a general postal voter, you will automatically be sent you ballot papers. You do not need to re-apply.

Can I get assistance in any other language?

Yes. For assistance in a language other than English please call **13 14 50**.

العربية	Italiano	Bahasa Indonesia	Polski
العربية	日本語	Tiếng Việt	한국어
Tagalog	Русский	Türkçe	ইউর্দু
中文	Português	Македонски	Hrvatski
हिन्दी	فارسی	Ελληνικά	Српски
Ελληνικά	Српски	Български	bil-Malti

For more information:
www.elections.nsw.gov.au
 or call 1300 135 736.

For hearing and speech impaired enquiries, call us via the National Relay Service on 13 36 77.



EL 2018_AWA_AUG18_V7

Appendix B: NSW Electoral Commission election service charter 2017-2020



Election Service Charter 2017 - 2020

GOALS	TO BE ACHIEVED BY:	SUCCESS MEASURED BY:
Foster participation in the democratic process	<ul style="list-style-type: none"> • Conducting impartial and fair elections in accordance with the law • Providing services and information to enable all election participants to participate fully including communities with historically lower participation rates • Communicating election information in ways that encourage awareness and engagement • Supporting events and activities that encourage participation in democracy 	<ul style="list-style-type: none"> • Election participants report conduct of election as impartial and fair and without barriers to participation • Election participation equals or exceeds prior election levels • Formality rates equal or exceed prior election levels • There are no Court challenges to declared results
Provide seamless service delivery	<ul style="list-style-type: none"> • Providing comprehensive services including: <ul style="list-style-type: none"> – information services – enrolment services – voting options including pre-poll and technology enabled voting – location and accessibility of polling places – services to assist those with particular needs – responsibilities and entitlements of candidates, groups and political parties including funding and disclosure requirements • Providing efficient services to meet needs of participants according to legislative mandate • Providing election services in timely, efficient and professional manner 	<ul style="list-style-type: none"> • Stakeholders feel well informed about election events • Election participants report satisfaction with the NSWEC's electoral services
Be customer focussed and commercially minded	<ul style="list-style-type: none"> • Understanding the needs of our stakeholders and users of our election services through liaison, consultation and structured feedback • Delivering well organised, reliable and quality elections • Ensuring elections are provided on a competitive basis 	<ul style="list-style-type: none"> • Participants report satisfaction with NSWEC's services and election staff • Those entities using the NSWEC to conduct elections report satisfaction with services provided and see these are representing value • Costs of providing elections are recovered • The NSWEC actively seeks feedback on its services
Be innovative and fast adaptors	<ul style="list-style-type: none"> • Utilising new technologies to increase convenience for those participating in elections within the legislative mandate while maintaining integrity of the election and security of information • Review developments in election services and funding and disclosure across Australia and internationally for possible application to NSW 	<ul style="list-style-type: none"> • The NSWEC is seen as seeking to adapt its services, within legislative requirements, to meet participants' needs • The NSWEC advises Government of innovations that will strengthen the democratic system and improve administration of elections

PM_2019_APR18

Appendix C: Wagga Wagga by-election 8 September 2018 polling places

Pre-poll voting venues

Venue	Address	Suburb	Accessibility
Sydney pre-poll	Level 25, 201 Kent Street	SYDNEY NSW 2000	Assisted access
Tumut pre-poll	Riverina Highlands Building 76 Capper Street, Tumut	TUMUT NSW 2720	Fully accessible
Wagga Wagga RO Office	97 Edward Street	WAGGA WAGGA NSW 2650	Assisted access

Declared institutions

Venue	Address	Suburb
Batlow District Hospital	61-81 Pioneer Street	BATLOW NSW 2730
Blakeney Lodge	27-29 Carey Street	TUMUT NSW 2720
Caloola Centre for Aged Care	Corner Redhill and Plumpton Roads	TATTON NSW 2650
Calvary Health Care (Riverina)	Hardy Avenue	WAGGA WAGGA NSW 2650
Gumleigh Gardens Hostel	29-35 Shaw Street	WAGGA WAGGA NSW 2650
Lockhart MPS	49-53 Hebden Street	LOCKHART NSW 2656
Loreto Home of Compassion	33 Bardia Street	WAGGA WAGGA NSW 2650
Mary Potter Nursing Home, the Forrest Centre	4 Lewisham Avenue	WAGGA WAGGA NSW 2650
RSL Remembrance Village	50-56 McKell Avenue	WAGGA WAGGA NSW 2650
Settlers Village	1 Franklin Drive	WAGGA WAGGA NSW 2650
The Haven/Wendy Hucker & Nan Roberts Nursing Homes	154 Bourke Street	MOUNT AUSTIN NSW 2650
Tumut Nursing Home	112 Lambie Street	TUMUT NSW 2720
Wagga Wagga Base Hospital	Edward Street	WAGGA WAGGA NSW 2650
Woodhaven Hostel	55a Hebden Street	LOCKHART NSW 2656

Voting venues

Venue	Address	Suburb	Accessibility
Adelong Services Club	48-56 Tumut Street	ADELONG NSW 2729	Assisted access
Ashmont Public	Ashmont Avenue	ASHMONT NSW 2650	Assisted access
Batlow School	Pioneer Street	BATLOW NSW 2730	Assisted access
Collingullie Hall	14 Urana St	COLLINGULLIE NSW 2650	Assisted access
Currawarna Community Centre	Bidgee Street	CURRAWARNA NSW 2650	Assisted access
Forest Hill Public	Sturt Highway	FOREST HILL NSW 2651	Fully accessible
Glenfield Park Scout Hall	59 Dalman Parkway	WAGGA WAGGA NSW 2650	Assisted access
Joyes Hall	Pugsley Place	NORTH WAGGA WAGGA NSW 2650	Assisted access
Koorringal Public	Lake Albert Road	KOORRINGAL NSW 2650	Assisted access

Venue	Address	Suburb	Accessibility
Ladysmith Public	Tywong Street	LADYSMITH NSW 2652	Assisted access
Lake Albert Public	Main Street	LAKE ALBERT NSW 2650	Assisted access
Lockhart Central	Halliday Street	LOCKHART NSW 2656	Assisted access
Mangoplah Hall	Kyeamba Street	MANGOPLAH NSW 2652	Assisted access
Mt Austin Public	McKell Avenue	MOUNT AUSTIN NSW 2650	Fully accessible
North Wagga Public	Hampden Avenue	NORTH WAGGA WAGGA NSW 2650	No wheelchair access
Pleasant Hills Public	Crawford Street	PLEASANT HILLS NSW 2658	Assisted access
Red Hill Public	Hawkes Place	TOLLAND NSW 2650	Assisted access
South Wagga Public	140 Edward Street	WAGGA WAGGA NSW 2650	Assisted access
Sturt Public	White Avenue	KOORINGAL NSW 2650	Assisted access
Talbingo Public	Lampe Street	TALBINGO NSW 2720	Assisted access
Tarcutta Hall	Sydney Street	TARCUTTA NSW 2652	Assisted access
The Rock Hall	140 Urana Street	THE ROCK NSW 2655	Assisted access
Tumut High	Bogong Place	TUMUT NSW 2720	Assisted access
Tumut Public	Simpson Street	TUMUT NSW 2720	Fully accessible
Turvey Park Public	31 Halloran Street	TURVEY PARK NSW 2650	Assisted access
Uranquinty Public	Pearson Street	URANQUINTY NSW 2652	Assisted access
Wagga Lutheran Primary	Tamar Drive	TATTON NSW 2650	Assisted access
Wagga Womens Bowls Club	Shaw Street	WAGGA WAGGA NSW 2650	Assisted access
Yerong Crk Public	Cole Street	YERONG CREEK NSW 2642	Fully accessible

Appendix D: Wagga Wagga by-election 8 September 2018 ballot paper

Ballot Paper
Legislative Assembly Election – Electoral District of
Wagga Wagga
Held on 8 September 2018


▶ DIRECTIONS FOR VOTING
PLEASE READ CAREFULLY

- Write the number **1** in the square next to the candidate of your choice.
- You can show more choices, if you want to, by writing numbers in the other squares, starting with the number **2**.
- Fold this ballot paper so your vote cannot be seen and place it in the ballot box (or in the envelope provided).

CANDIDATES

<input type="checkbox"/>	McDONAGH Seb SHOOTERS, FISHERS AND FARMERS
<input type="checkbox"/>	HAM Julia LIBERAL
<input type="checkbox"/>	McGIRR Joe INDEPENDENT
<input type="checkbox"/>	GOODLASS Ray THE GREENS
<input type="checkbox"/>	ARENTZ Tom CHRISTIAN DEMOCRATIC PARTY
<input type="checkbox"/>	FUNNELL Paul INDEPENDENT
<input type="checkbox"/>	HAYES Dan COUNTRY LABOR

You must not take a ballot paper out of the polling place

electoral
commission nsw